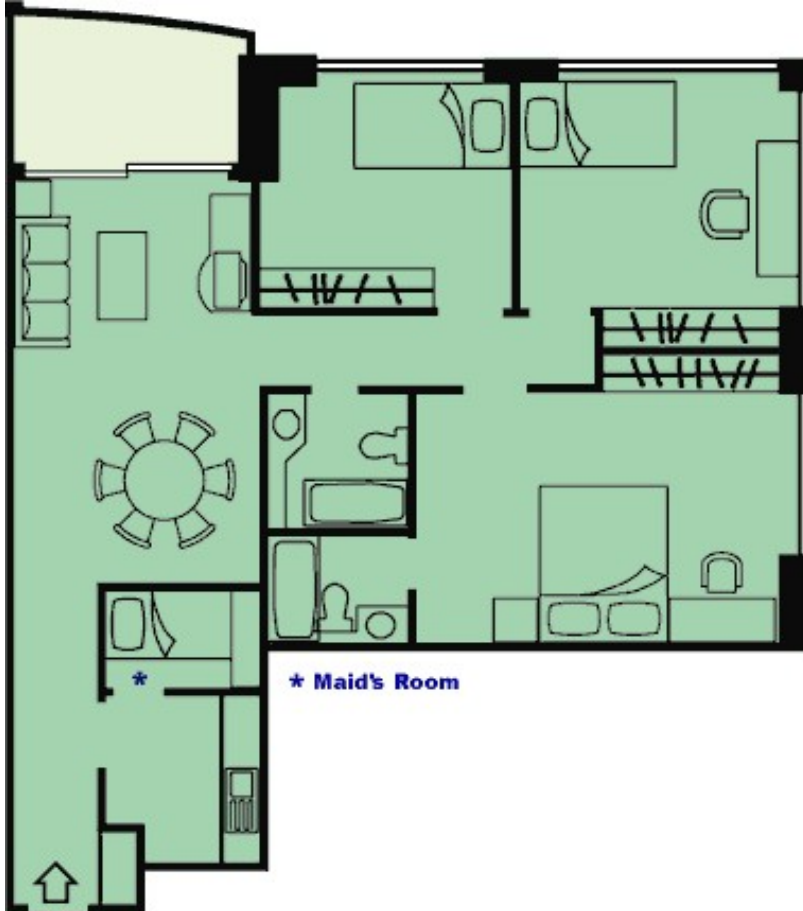


## Floorplan of Apartment



Apartments in Hong Kong have various layouts, but typically contain 2/3/4 bedrooms with 1/2/3 bathrooms, a combined living/dining room which may be square, rectangular, offset or split-level (separate ones are rare), kitchen with adjacent maid's room/bathroom, laundry/utility area and sometimes a balcony. Car parks are usually provided. Some properties provide communal recreational facilities such as pool, tennis or squash courts, clubhouse, gymnasium or playground