



**Highlight**

The Peak  
山頂

**Spotlight**

UK Properties  
英國物業

**Feature**

Patterned and colourful  
燦爛多彩

領域  
LANDSCOPE

獨家代理  
SOLE AGENT



## 47A Upper Stubbs Road, The Peak 東半山山頂

Located on a serene neighbourhood off Stubbs Road, this immaculate 2,039 s.f. residence boasts a practical layout with stylish furnishings. This property is in close proximity to Opus Hong Kong, Mount Nicholson and White Jade. In addition, there is a recent new sale transaction at \$61,000 per square feet in White Jade, meaning that this property has great potential to greatly appreciate.

With views over the harbour and racecourse, this residence comes complete with three bedrooms, three bathrooms, combined living and dining rooms, a spacious kitchen, a maid's quarter and one covered car park.

Bank valuation is HK\$88,000,000.



Can be sold via company shares transfer  
可以公司轉讓股份形式買賣



這位於山頂地段上的司徒拔道寧靜一隅的瑰麗住宅，實用面積2,039平方呎，室內間隔實用，時尚品味的設計為居室營造溫暖愉悅的氛圍。物業鄰近「傲璇」及「聶歌信山道8號」，再加上鄰近的「白璧」剛創下新成交高達呎價\$61,000的紀錄，可見該物業極具升值潛力及爆炸力，請勿失良機。

單位坐擁投資首選的維港及馬場美景，三房三廁佈局連相連客廳、偌大的廚房、傭人套房及一個有蓋車位。

物業附近居住環境密度低，卻毗鄰市中心，數分鐘路程直達銅鑼灣、中環、山頂及淺水灣等地。銀行估價為港幣8,800萬。

Immaculate residence in Upper Midlevels East  
東半山頭段瑰麗住宅

3 bed, 3 bath, 1 car park

Saleable 實用 2,039 s.f.

Sale 售 \$89,800,000

Inquiries 查詢 ☎ 6535 9918 Josephine Yuen 阮小姐

Property Search No. 物業搜尋編號 34856





## Autumn delights 秋日新意

As the autumnal breeze arrives, it is time to take a look at the choices we have in textiles. Creating a warm atmosphere at home takes little more than a change in the usage of cloth, and when decorating an interior, we can consider utilising some fabric-wrapped furniture, which in addition to adding some colour makes the furniture more comfortable. Aside from plush seats and fine fabrics, coverings on the walls can also elevate that cosy feeling.

秋意漸濃，我們襯衫時多了不少選擇。與此同時，要在家營造溫暖感覺，並不需要比選擇襯衫多花功夫。我們布置室內時，可以考慮添置有布藝包裹的家具。除了色彩斑斕，使用這些家具時更帶來舒適的感覺。

舒適的座椅加上精美的布藝，固然令人感到愜意。可是，為牆壁添上覆蓋物，同樣可以營造舒適的感覺。

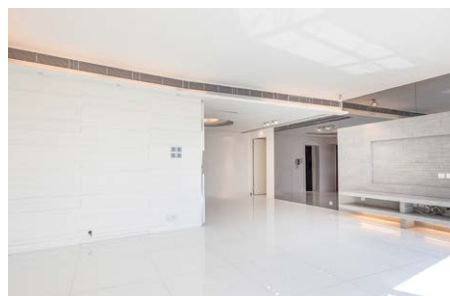
## Contents 目錄

### 04 Monthly highlight

The Peak  
山頂

### 06 Southside & The Peak sale

南區及山頂 出售



### 18 Midlevels East & Happy Valley sale

東半山及跑馬地 出售

### 24 Feature

Patterned and colourful  
燦爛多彩



### 14 Highlight

Midlevels Central  
中半山

### 15 Midlevels Central & West sale

中半山及西半山 出售



Follow Us 關注我們



landscapehk

4 Easy ways to list your property with The Key:

4個簡單方法在《大宅》刊登您的出售 / 出租物業：



6891 3639 WhatsApp



info@landscape.com



2152 4818



www.landscape.com/sell-to-let



## Contents 目錄

- 26 Sai Kung & Clear Water Bay sale  
西貢及清水灣 出售
- 30 Lease  
出租
- 38 **Highlight**  
Midlevels West  
西半山
- 41 Japanese Properties  
日本物業
- 42 U.K. Properties  
英國物業

Published and distributed by



領域房地產顧問有限公司

C-018733

Tel: +852 2866 0022

Fax: +852 2866 0015

Email: [info@landscape.com](mailto:info@landscape.com)


Website: [www.landscape.com](http://www.landscape.com)

Address: Units 1201-3, 12/F, Siu On Centre,  
No. 188 Lockhart Road, Wanchai, Hong Kong

Scan for  
online  
version



Produced by

vision  one

Vision One Hong Kong Ltd

Email: [info@visiononehk.com](mailto:info@visiononehk.com)

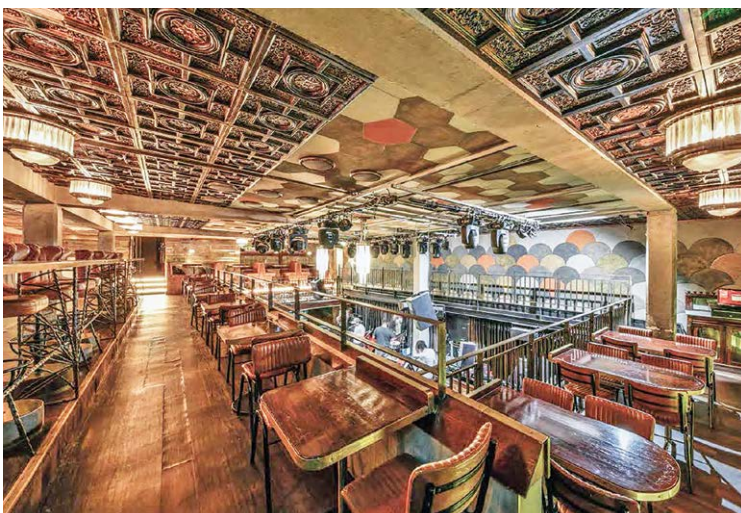
Website: [www.visiononehk.com](http://www.visiononehk.com)

Advertising Enquiries:

Vision One Hong Kong Limited

Contact: [josephineleung@visiononehk.com](mailto:josephineleung@visiononehk.com)

Mobile: +852 9821 5151



The information, text, photos, analyses and projections contained herein are provided solely for the convenience of prospective clients and no warranty or representation as to their accuracy, correctness or completeness is made by Landscape Surveyors Limited, Landscape Realty Limited, Landscape International Property Agency Limited or the owners, none of whom shall have any liability or obligation with respect thereto. Interested parties should rely on their own investigations, interpretations and analyses in connection with the purchase or letting thereof.

Purchasing uncompleted properties situated outside Hong Kong is complicated and contains risk. You should review all relevant information and documents carefully before making a purchase decision. If in doubt, please seek independent professional advice before making a purchase decision. Selling Agent: Landscape International Property Agency Limited (C-089033) and Landscape Surveyors Limited (C-000715) are licensed and regulated by EAA. Our sales representatives for overseas property work exclusively in relation to properties outside Hong Kong and unless expressly stated otherwise, are not licensed under the EAA to deal with Hong Kong properties.

Information has been provided to us by sources deemed reliable, but no warranty or representation is made as to its accuracy, correctness or completeness. These offerings are made subject to contract, correction of errors, omissions, prior sale or lease, change of price or terms or withdrawal from the market without notice. The contents of The Key are for reference only and do not constitute all or any part of a contract. Copyright 2022

ligne roset

GF & 1F, 16 Blue Pool Road, Happy Valley 2891 0913  
G01 & L01, Leighton Centre, Causeway Bay 2778 8748

*Taru*

*Sebastian Herkner, Paris*

[ligne-roset.com](http://ligne-roset.com)



## A palatial residence

### 富麗堂皇

Boasting a meticulous design, this apartment truly demonstrates the homeowner's taste while offering an unrivalled sea and mountain view.

The apartment includes a range of carefully chosen furniture. Paired perfectly with the lighting, a comfortable yet elegant ambience exudes from the combined living and dining room.

Another highlight of this apartment is the dining area with its showpiece wine

cellar. Here, residents can enjoy a selection of wines with their beloved family and friends. A countertop in the room allows for more space for residents to handle their drinks.

The apartment's practical layout allows residents to easily arrange furniture. With good internal upkeep, and a fully fitted bathroom and spacious kitchen, homebuyers are free from the hassle of needing to refurbish the apartment.

In terms of recreational facilities, the development boasts an outdoor swimming pool, a tennis court, and a children's playground. Educational and medical facilities on The Peak are located close to the development, with other amenities also available in the area.

Available at the price of HK\$102,800,000, this apartment is an ideal choice for homebuyers who are looking to move to The Peak.



此尊貴物業的設計一絲不苟，呈現屋主的品味之餘，住戶更可以飽覽難以媲美的山海雙景。

物業內佈置了屋主精心挑選的家具陳設。家具搭配華麗的燈光設計，令相連的客飯廳洋溢風雅又舒適怡人的氣氛。

飯廳是物業的另一大特色，可供展示的酒櫃盡顯非凡氣派。住戶可在這裡與親朋好友把酒言歡。另外，酒櫃旁的工作枱，是住戶準備佳釀的理想之處。

居室佈局實用，方便陳設家具。保養方面，室內處於良好狀態，而且提供設備齊全的浴室及寬敞廚房。新買家入住後，無需大費周章整修家居。

屋苑設有室外泳池、網球場以及兒童遊樂場。另外，物業鄰近山頂的教育及醫療設施，其他娛樂消閒設施亦應有盡有。

物業目前以港幣1億零280萬元出售，是考慮於山頂置業人士的理想選擇。



Tastefully renovated  
apartment at The Peak  
山頂品味裝修住宅

3 bed, 2 bath, 1 car park

Saleable 實用 2,643 s.f.

Sale 售 \$108,000,000 \$102,800,000

Inquiries 查詢 ☎ 6535 9918 Josephine

Yuen 阮小姐

Property Search No. 物業搜尋編號 105918



**SALE 出售**

**Southside & The Peak 南區及山頂**



**Private huge rooftop penthouse in Pokfulam**

薄扶林諾大私家全層天台頂層單位

**4 bed, 3.5 bath, 4,800 s.f roof, 2 car parks**

Unique 4-bedroom penthouse with a massive private rooftop enjoys a stunning sea view

獨特四房頂層單位，連諾大私家天台，眺望壯麗海景

**Saleable 實用 2,301 s.f.**

**Sale 售 \$130,000,000**

**Inquiries 查詢** ☎ 6535 9918 Josephine Yuen 阮小姐

**Property Search No. 物業搜尋編號 40249**



**Can be sold via company shares transfer**  
可以公司轉讓股份形式買賣



**Prestigious apartment at The Peak**

山頂尊貴住宅

**4 bed, 2.5 bath, 1 car park**

Highly sought after 4-bedroom apartment with breathtaking Southside sea and mountain views

受歡迎四房住宅，飽覽優美南區海景及山景

**Saleable 實用 2,222 s.f.**

**Sale 售 \$87,000,000**

**Inquiries 查詢** ☎ 6535 9918 Josephine Yuen 阮小姐

**Property Search No. 物業搜尋編號 28117**





Can be sold via company shares transfer  
可以公司轉讓股份形式買賣



### Garden house at The Peak

山頂花園洋房

**3 bed, 2.5 bath, 929 s.f. garden, 1 garage (2 cars)**

Bright and airy garden house with ample alfresco space overlooks a stunning sea view of Southside

明亮通風花園洋房，擁充足戶外空間，俯瞰壯麗南區海景

**Saleable 實用 1,690 s.f.**

**Sale 售 \$130,000,000**

**Inquiries 查詢** ☎ 6535 9918 Josephine Yuen 阮小姐

**Property Search No. 物業搜尋編號 1708**



### Sea view apartment in Tai Tam

大潭海景單位

**4 bed, 2.5 bath, 2 car parks**

Lovely 4-bedroom mid-rise apartment enjoys spectacular sea view, for sale with 2 car parks and for lease with 1 car park

別緻四房中密度單位，飽覽優美海景，出售連兩個車位，出租連一個車位

**Saleable 實用 1,824 s.f.**

**Sale 售 \$76,000,000 / Lease 租 \$110,000 incl.**

**Inquiries 查詢** ☎ 9020 1583 Michelle Chung 鍾小姐

**Property Search No. 物業搜尋編號 13980**



**SALE 出售**

**Southside & The Peak** 南區及山頂



**Unique duplex with townhouse style in Pokfulam**

薄扶林洋房風格 獨特複式

**2 bed, 1 study, 2 bath, 776 s.f. roof, 2 car parks**

Well decorated duplex unit with private roof top in peaceful location

優質裝修複式單位，連私家天台，地段和諧寧靜

**Saleable 實用 1,636 s.f.**

**Sale 售 \$36,000,000**

**Inquiries 查詢** 📞 9021 1270 Annie Lee 李小姐

**Property Search No. 物業搜尋編號 170051**



**Can be sold via company shares transfer**  
可以公司轉讓股份形式買賣



Actual view from apartment 現場實景

**Rare 3-ensuite apartment in Repulse Bay**

淺水灣罕有三套房單位

**3 ensuite, 3.5 bath, 1 car park**

Generous 3-bedroom apartment with full clubhouse facilities in a serene location

淺水灣罕有寬敞三套房單位，連完善會所設施，地段寧靜

**Saleable 實用 2,067 s.f.**

**Sale 售 \$88,000,000**

**Inquiries 查詢** 📞 9027 2100 Louis Wong 黃先生

**Property Search No. 物業搜尋編號 84538**



Can be sold via company shares transfer  
可以公司轉讓股份形式買賣



### Waterfront house in Pokfulam

薄扶林臨海洋房

**5 bed, 1 study, 5.5 bath, 1,999 s.f. garden & 283 s.f. roof, 1 garage**

Garden 5-bedroom house with sufficient outdoor space overlooks a magnificent sea view

花園五房洋房，戶外空間充裕，俯瞰華麗海景

**Saleable** 實用 3,334 s.f.

**Sale** 售 \$230,000,000

**Inquiries** 查詢 ☎ 6607 2082 Stephen Chan 陳先生

**Property Search No.** 物業搜尋編號 38810



### Prestigious apartment at The Peak

山頂尊貴住宅

**3 bed, 2 bath, 1 car park**

Light and airy 3-bedroom apartment with a fantastic Victoria Harbour view

明亮通風三房單位，享維港迷人景色

**Saleable** 實用 2,072 s.f.

**Sale** 售 \$110,000,000

**Inquiries** 查詢 ☎ 6607 2082 Stephen Chan 陳先生

**Property Search No.** 物業搜尋編號 38984



### Highly sought after apartment in Repulse Bay

淺水灣受歡迎單位

**4 bed, 2 bath, 1 car park**

Rare 4-bedroom apartment with luxurious clubhouse facilities enjoys a verdant mountain view

矜罕四房單位，連豪華會所設施，飽覽翠綠山景，可租可售

**Saleable** 實用 1,664 s.f.

**Sale** 售 \$90,000,000 / Lease 租 \$110,000 incl.

**Inquiries** 查詢 ☎ 6535 9918 Josephine Yuen 阮小姐

**Property Search No.** 物業搜尋編號 100222



**SALE 出售**

**Southside & The Peak 南區及山頂**



**Exceptional duplex unit at The Peak**  
山頂全維港複式

**4 bed, 4.5 bath, 2 car parks**

Low-rise duplex unit with perfect privacy overlooks a breathtaking Victoria Harbour view  
低密度複式單位，私隱度高，俯瞰氣勢磅礴維港景

**Saleable 實用 3,581 s.f.**

**Sale 售 \$228,000,000 / Lease 租 \$280,000 incl.**

**Inquiries 查詢** ☎ 6535 9918 Josephine Yuen 阮小姐

**Property Search No. 物業搜尋編號 103366**



**Can be sold via company shares transfer**  
可以公司轉讓股份形式買賣



**Well decorated house in Tai Tam**  
大潭優質裝修洋房

**5 bed, 4.5 bath, 904 s.f. garden & 480 s.f. roof, 1 garage (2 cars)**

Generous 5-bedroom house with sufficient outdoor space overlooks a magnificent sea view  
巨型五房洋房，享充足的戶外空間，俯瞰優美海景

**Saleable 實用 3,314 s.f.**

**Sale 售 \$169,000,000 / Lease 租 \$250,000 incl.**

**Inquiries 查詢** ☎ 6535 9918 Josephine Yuen 阮小姐

**Property Search No. 物業搜尋編號 173205**



Can be sold via company shares transfer  
可以公司轉讓股份形式買賣



### Elegant low-rise unit in Pokfulam

薄扶林低密度雅居

**6 bed, 4 bath, over 5,000 s.f. garden, 2 car parks**

Massive 6-bedroom low-rise apartment with a private huge garden and swimming pool

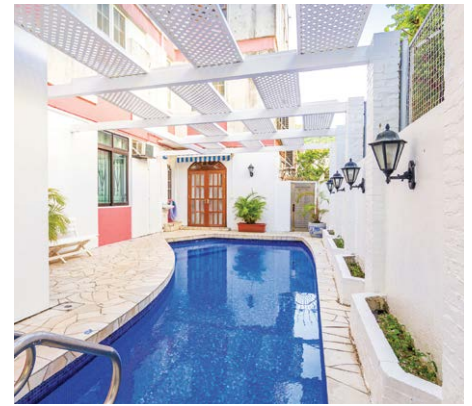
偌大六房低密度住宅，連私家大花園及游泳池

**Saleable** 實用 3,645 s.f.

**Sale** 售 \$148,000,000

**Inquiries** 查詢 ☎ 9020 1583 Michelle Chung 鍾小姐

**Property Search No.** 物業搜尋編號 47709



### Nicely designed townhouse in Deep Water Bay

深水灣優雅裝修洋房

**4 bed, 3.5 bath, private roof, 1 garage (for 3-4 cars)**

Spacious 4-bedroom house with meticulous design and an unrivalled green view

深水灣寬敞四房大宅，享精美裝修及優美翠綠景色

**Saleable** 實用 3,200 s.f.

**Sale** 售 \$210,000,000

**Inquiries** 查詢 ☎ 9020 1583 Michelle Chung 鍾小姐

**Property Search No.** 物業搜尋編號 41879



**SALE 出售**

**Southside & The Peak** 南區及山頂

Can be sold via company shares transfer

可以公司轉讓股份形式買賣



### Designer house in Deep Water Bay

深水灣設計師裝修洋房

**4 bed, 4.5 bath, 2,140 s.f. terrace & 336 s.f. roof, 2 car parks**

Brand new designer décor and fully furnished colonial house in prestigious location

全新設計師裝修英式洋房，設施齊全，地段顯赫尊貴

**Saleable 實用** 2,939 s.f.

**Sale 售** \$308,000,000

**Inquiries 查詢** ☎ 9027 2100 Louis Wong 黃先生

**Property Search No.** 物業搜尋編號 202295



### Rare penthouse unit in Repulse Bay

淺水灣罕有頂層單位

**3 bed, 2.5 bath, 2 car parks**

Unique penthouse unit overlooks a spectacular sea view

獨樹一幟頂層單位，俯瞰遼闊海景

**Saleable 實用** 2,107 s.f.

**Sale 售** Open Offer

**Inquiries 查詢** ☎ 9027 2100 Louis Wong 黃先生

**Property Search No.** 物業搜尋編號 32320



### Sea view house in Repulse Bay

淺水灣海景洋房

**4 bed, 3.5 bath, 413 s.f. terrace, 1 garage (2 cars)**

Rare find well decorated townhouse with a panoramic view of Repulse Bay Beach

矜罕優質裝修洋房，坐擁淺水灣泳灘優美全海景，可租可售

**Saleable 實用** 2,526 s.f.

**Sale 售** \$250,000,000 / Lease 租 \$200,000 incl.

**Inquiries 查詢** ☎ 6535 9918 Josephine Yuen 阮小姐

**Property Search No.** 物業搜尋編號 157315



獨家代理  
SOLE AGENT



## Palatial lifestyle

### 王者享受

Luxuriously decorated, this 3-storey house offers magnificent views of Repulse Bay, Deep Water Bay, and Middle Island with opulent design.

Boasting four bedrooms (including three ensembles), it also has four-and-a-half bathrooms, a separated living and dining room, three maid's rooms, a utility room, a family room, two balconies, a private lift, and a private gate with parking space for 4-6 cars.

The awe-inspiring double-height living room leads to a secluded terrace that takes in fantastic views. Additionally, the ample outdoor space is ideal for alfresco dining and entertaining.

#### Prestigious house in Repulse Bay

淺水灣極罕有洋房

4 bed, 4.5 bath, Approx. 2,500 s.f. garden/terrace,  
Approx. 1,700 s.f. roof, parking space (4-6 cars)

Saleable 實用 5,506 s.f.

Sale 售 \$800,000,000 \$690,000,000

Inquiries 查詢 9027 2100 Louis Wong 黃先生

Property Search No. 物業搜尋編號 20284



三層高的洋房附有奢華裝修，享壯闊的淺水灣、深水灣及熨波洲優美的景色。

洋房提供四間睡房，三間為套房，另有四間半浴室、獨立的客廳、三間家傭房、多用途房、家庭廳、兩個露台、私家升降機、獨立大圍及停車位(可容納4-6輛車)。

大廳樓底高達兩層，並連接清幽的平台，迷人景色盡收眼底。此外，充足的戶外空間是舉行戶外用餐和娛樂的最佳地方。



**SALE 出售**

**Midlevels Central & West 中半山及西半山**



### Practical apartment on Po Shan Road

寶珊道實用住宅

**3 bed, 3 bath, 1 car park**

Cozy 3-bedroom apartment with a practical layout overlooks a fantastic view of Victoria Harbour

舒適三房單位，間隔實用，俯瞰維多利亞港迷人景色，可租可售

**Saleable 實用 2,499 s.f.**

**Sale 售 \$80,000,000 / Lease 售 \$120,000 incl.**

**Inquiries 查詢** ☎ 9021 1270 Annie Lee 李小姐

**Property Search No. 物業搜尋編號 35976**



## A view without envy 壯闊景觀

Boasting one of the best views in Hong Kong, this apartment offers a not-to-be-missed opportunity for homebuyers looking for a flat in a sought-after residential estate.

From the living and dining room, residents can enjoy the world-renowned Victoria Harbour from the floor-to-ceiling window which also brings in sunlight and fresh air, creating a sublimely comfortable atmosphere indoors.

Facilities available to residents include a range of amenities giving residents the opportunity to enjoy different sports.

此物業坐擁全港最優美的景色之一，為有意在本區置業的人士提供理想選擇。

住戶不論身處客廳或者飯廳，都可飽覽世界聞名的維港景色。落地玻璃窗更將戶外的陽光及空氣帶到室內，令單位內增添舒適暖意。

屋苑亦設有多種不同的康樂設施供住戶專享。

### Harbour view apartment in Midlevels Central

中半山海景住宅

**3 bed, 2 bath, 1 car park**

**Saleable 實用 1,513 s.f.**

**Sale 售 \$72,000,000**

**Inquiries 查詢** ☎ 9021 1270 Annie Lee 李小姐

**Property Search No. 物業搜尋編號 134864**







### Tastefully renovated apartment on Bowen Road

寶雲道品味裝修住宅

**3 bed, 2 bath, 1 car park**

Modern apartment with an excellent internal upkeep overlooks magnificent city, green and partial Victoria Harbour views

當代時尚住宅，裝修簇新，俯瞰壯麗城市景、翠綠景及部分維港景

**Saleable** 實用 1,485 s.f.

**Sale** 售 \$60,000,000

**Inquiries** 查詢 ☎ 6607 2082 Stephen Chan 陳先生

**Property Search No.** 物業搜尋編號 192119



### Practical apartment on Po Shan Road

寶珊道實用住宅

**4 bed, 2 bath, 1 car park**

Large and spacious 4-bedroom apartment with an open city view

寬敞偌大四房單位，連開揚城市景，可租可售

**Saleable** 實用 2,410 s.f.

**Sale** 售 \$65,000,000 / **Lease** 租 \$81,000 incl.

**Inquiries** 查詢 ☎ 6607 2082 Stephen Chan 陳先生

**Property Search No.** 物業搜尋編號 32257



**SALE 出售**

**Midlevels Central & West 中半山及西半山**

Can be sold via company shares transfer  
可以公司轉讓股份形式買賣



### Meticulous designed apartment in Midlevels Central

中半山精美裝修單位

**3 bed, 3 bath, 1 car park**

One of a kind apartment close to the Zoological and Botanical Gardens and Hong Kong Park

獨具品味裝修單位，鄰近動植物公園及香港公園

**Saleable 實用 1,452 s.f.**

**Sale 售 \$71,000,000**

**Inquiries 查詢** ☎ 9021 1270 Annie Lee 李小姐

**Property Search No. 物業搜尋編號 157949**



### Grand harbour view apartment in Midlevels West

西半山壯麗海景住宅

**4 bed, 3 bath, 1 car park**

Luxurious 4-bedroom apartment with a spacious layout overlooks an amazing view of Victoria Harbour

豪華四房單位，間隔實用，俯瞰維港壯麗景色，可租可售

**Saleable 實用 2,355 s.f.**

**Sale 售 \$188,000,000 / Lease 租 \$205,000 incl.**

**Inquiries 查詢** ☎ 6607 2082 Stephen Chan 陳先生

**Property Search No. 物業搜尋編號 165672**



## General Valuations

We carry out property valuations for diversified purposes including IPO, annual audit, mergers and acquisitions, insurance, immigration, disposal, rating / stamp duty appeal and tax computations.

### 一般估值

我們會受託提供估值報告作公司上市、審計賬目、收購合併、保險、海外移民、資產出售、差餉或印花稅上訴及其他稅務用途。

## Expert Witness and Dispute Resolution

We provide independent professional valuation advice and full narrative reports to solicitors and other clients in relation to property disputes, and can also act as an expert witness upon request.

### 專家證人和爭端調解

當物業價值遇上爭議時，我們向律師和客戶提供獨立專業估值建議和完整詳盡的報告，並在需要時在法庭充當專家證人。

## Railway Works Disturbance Claim

Retail shop operators suffer from disturbance and business loss due to railways works. The complexity of relevant compensation ordinances is often beyond the understanding of a layman. We can help unravel the perplexity of such issues.

### 滋擾補償評估

零售及飲食業往往因鐵路工程受到滋擾並引致生意損失。相關補償條例複雜繁瑣，一般人不易理解。我們熟悉法定評估工作，深刻瞭解受影響行業，協助客戶拆解難題。

## Development Consultancy

We have diverse and extensive experience in providing professional planning advice ranging from S.16 Planning Application, Lease Modification, Temporary Waiver etc

### 土地發展顧問

我們有多元化的經驗幫助客戶進行城市規劃第16條申請，更改土地契約，申請土地短期豁免書等。



## Resumption Compensation

The government and URA acquire private land for public purposes. We are well-versed with resumption-related ordinances, subsequent procedure and assessment of claim. We can assist you in quantifying losses and carrying out negotiations with the Government and URA.

### 收地損失評估

政府及市區重建局不時根據相關條例收回私人土地作公共用途。我們熟悉該等條例，收地程序及補償評估工作，能協助客戶計算損失並代表客戶進行談判。

## Compulsory Sale for Redevelopment

Under ordinance Cap.545, developers can apply to the Lands Tribunal for an order for sale of a lot when they have successfully acquired sufficient undivided shares of the lot. We can represent you to handle negotiations with developers more effectively and act as your expert witness if the case is eventually referred to the Lands Tribunal for determination.

### 強制售賣

根據香港法例第545章，若發展商成功收購土地上足夠的業權，便可向土地審裁處申請強制拍賣該土地。我們能代表小業主更有效地跟發展商商討收購價。若案件最終需提交土地審裁處裁決，我們亦可充當專家証人。

Inquiries : **Cliff Lau 劉先生** (MRICS)

查詢: 2152 4868  
cliff.lau@landscape.com

**Jack Chan 陳先生** (MHKIS, MRICS, MCIREA)

2152 4812  
jack.chan@landscape.com

**SALE 出售**

Midlevels East & Happy Valley 東半山及跑馬地



### Lovely apartment in Happy Valley

跑馬地精品單位

**2 bed, 2 bath, 1 car park**

Nicely renovated 2-bedroom apartment in a convenient location

精緻裝修兩房住宅，交通便利

**Saleable 實用** 1,208 s.f.

**Sale 售** \$33,800,000

**Inquiries 查詢** ☎ 9021 1270 Annie Lee 李小姐

**Property Search No. 物業搜尋編號** 182858



Can be sold via company shares transfer

可以公司轉讓股份形式買賣



### Family apartment in Midlevels East

東半山家庭式住宅

**4 bed, 2 bath, 2 car parks**

City view 4-bedroom apartment with a balcony in an exclusive building

尊貴住宅大廈，城市景四房單位，連露台

**Saleable 實用** 2,344 s.f.

**Sale 售** \$103,800,000

**Inquiries 查詢** ☎ 6607 2082 Stephen Chan 陳先生

**Property Search No. 物業搜尋編號** 37145



### Modern apartment in Midlevels East

東半山時尚住宅

**2 bed, 2 bath, 1 car park**

Lovely 2-bedroom apartment with a stunning city view and Hong Kong Stadium view in prime location

精品兩房單位，享璀璨城市景及香港大球場景色，地段優越，可租可售

**Saleable 實用** 1,411 s.f.

**Sale 售** \$55,000,000 / Lease 租 \$75,000 incl.

**Inquiries 查詢** ☎ 9020 1583 Michelle Chung 鍾小姐

**Property Search No. 物業搜尋編號** 129741



# m+


## Professional and Superior Design


With experienced renovation service

### M Pluz Limited

Interior Design & Architecture

 +852 3620 2901

 [www.mpluzdesign.com](http://www.mpluzdesign.com)

 [mpluzdesign](https://www.instagram.com/mpluzdesign)

 +852 6834 8201

 [info@mpluzdesign.com](mailto:info@mpluzdesign.com)



**SALE 出售**

**Midlevels East & Happy Valley 東半山及跑馬地**



**Unique duplex penthouse in Happy Valley**

跑馬地獨特頂層複式住宅

**3 bed, 2 bath, 132 s.f terrace & 81 s.f. roof, 1 car park**

Contemporary 3-bedroom apartment with full clubhouse facilities in convenient location

當代時尚三房單位，連完善會所設施，交通便利

**Saleable 實用 1,453 s.f.**

**Sale 售 \$60,000,000**

**Inquiries 查詢** ☎ 9021 1270 Annie Lee 李小姐

**Property Search No. 物業搜尋編號 194023**



**Can be sold via company shares transfer**  
可以公司轉讓股份形式買賣



**Family apartment in Midlevels East**

東半山家庭式大單位

**4 bed, 2 bath, 1 car park**

Older-style large apartment in exclusive location with easy access to Causeway Bay

東半山傳統大住宅，舉步可達銅鑼灣

**Saleable 實用 2,560 s.f.**

**Sale 售 \$59,800,000**

**Inquiries 查詢** ☎ 9021 1270 Annie Lee 李小姐

**Property Search No. 物業搜尋編號 46004**



指定特委代理



Can be sold via company shares transfer  
可以公司轉讓股份形式買賣

## 一籃子別墅 公司持有 折扣出售

### 全新落成歐陸別群 罕有一併出售

總實用面積：19,916平方呎（每幢：2,393-2,643平方呎）

- ▶ 自主國度 合家族、機構、團體打造緊密相鄰圍爐天地
- ▶ 公司轉讓 8幢豪華花園洋房一併出售
- ▶ 彌足珍貴 元朗區罕有全統一純低密度豪宅段
- ▶ 全新建成 3層高特高樓底獨立車庫花園天台
- ▶ 尊享會所 時尚設施專業管理提供貼心服務
- ▶ 圍爐歡聚 打造自主國度合家族機構

- ✦ 2分鐘（步程）輕鐵站，15分鐘速達屯馬綫元朗站
- ✦ 5分鐘速達元朗廣場、千色匯等區內大型配套
- ✦ 10分鐘迅達鄰近大型購物商城Yoho Mall型點
- ✦ 28分鐘直達香港國際機場及港珠澳大橋香港口岸
- ✦ 26分鐘到達環球貿易廣場（ICC）及柯士甸站
- ✦ 35分鐘到達IFC及中環核心CBD
- ✦ 取道深港通道、頃刻接通深圳南山區及前海CBD，未來華南經濟重鎮，今日率先無縫連繫

#### Inquiries 查詢

- ☎ 6535 2866 Mr. Lai 黎先生
- ☎ 9027 2100 Louis Wong 黃先生
- ☎ 6607 2082 Stephen Chan 陳先生

Property No. 物業編號 YL001

✦ Source 資料來源: Google Map

整盤優惠折扣出售  
歡迎查詢及預約視察





- LANDSCAPE ENQUIRIES / WHATSAPP -

2152 4818

- ADDRESS -

24A Kadoorie Avenue,  
Kadoorie Hill

Name of Street and Street Number of the Development: 24A Kadoorie Avenue | District: Ho Man Tin | Website Address: [www.stgeorgesmansions.hk](http://www.stgeorgesmansions.hk)# The photographs, images, drawings or sketches shown in this advertisement / promotional material represent an artist's impression of the Development concerned only. They are not drawn to scale and / or may have been edited and processed with computerized imaging techniques. Prospective purchasers should make reference to the sales brochure for details of the Development. The Vendor also advises prospective purchasers to conduct an on-site visit for a better understanding of the development site, its surrounding environment and the public facilities nearby. This advertisement / promotional material shall not constitute or be construed as giving any offer, representation, undertaking or warranty whether express or implied by the Vendor. Please refer to the sales brochure for details.





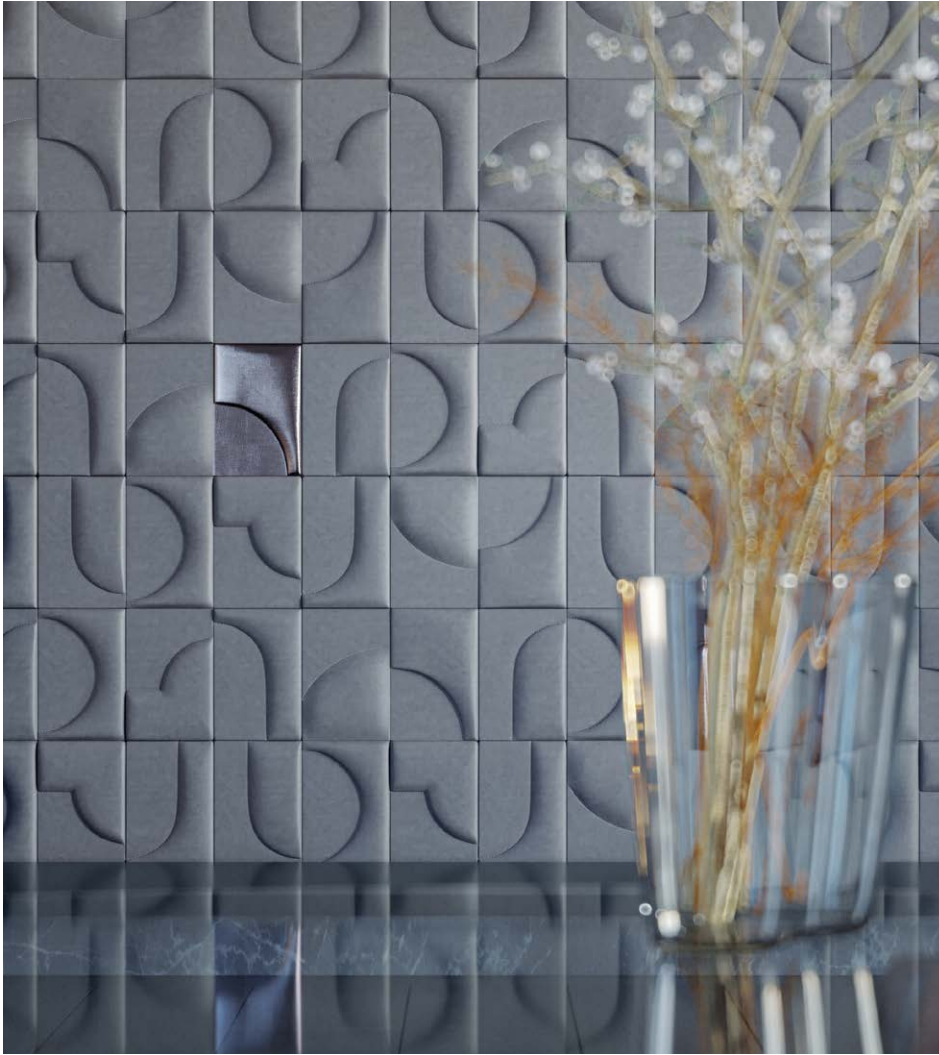
# ST GEORGE'S MANSIONS

## KADOORIE AVENUE

The image comprises a photograph taken on 29 April 2019 in the vicinity of the Development and computer graphic of the Development and surrounding environment of the Development. The image has been edited and processed with computerized imaging techniques and is for reference only. The image is not for the purpose of displaying the final appearance of the Development or any part thereof upon completion nor the view from any part of the Development. The surrounding environment, buildings, facilities or environment of the Development may change from time to time. Copyright © DBOX. This advertisement / promotional material shall not constitute or be construed as giving any offer, representation, undertaking or warranty whether express or implied by the Vendor. Please refer to the sales brochure for details. Vendor: CLP Property Investment Limited (as "Owner"), Pacific Shine Limited (as "Person so engaged") (Notes: "Owner" means the legal or beneficial owner of the Development. "Person so engaged" means the person who is engaged by the Owner to co-ordinate and supervise the process of designing, planning, constructing, fitting out, completing and marketing the Development.). Holding companies of the Vendor (Owner): CLP Properties Limited and CLP Holdings Limited. Holding companies of the Vendor (Person so engaged): Tsim Sha Tsui Properties Limited, Sino Land Company Limited, King Chance Development Limited and World Focus Development Limited. Authorized Person for the Development: Cheng Yan Ying Grace. The firm or corporation of which an Authorized Person for the Development is a proprietor, director or employee in his or her professional capacity: AGC Design Limited, Building Contractor for the Development: Gammon Engineering & Construction Company Limited. The firms of solicitors acting for the Owner in relation to the sale of residential properties in the Development: Mayer Brown and Woo Kwan Lee & Co. Authorized institution that has made a loan or has undertaken to provide finance for the construction of the Development: China Construction Bank (Asia) Corporation Limited (Note: the relevant undertaking has been cancelled). Any other person who has made a loan for the construction of the Development: King Chance Development Limited. The estimated material date for the Development to the best of the Vendor's knowledge: 30 November 2022 ("Material Date" means the date on which the conditions of the land grant are complied with in respect of the Development. The estimated material date is provided by the Authorized Person for the Development. The estimated material date is subject to any extension of time that is permitted under the agreement for sale and purchase.) Prospective purchasers are advised to refer to the sales brochure for any information on the Development.\*The address of the website designated by the Vendor for the Development for the purposes of Part 2 of the Residential Properties (First-hand Sales) Ordinance. This advertisement is published by the Vendor or is published with its consent. For details of the Development, please refer to the sales brochure. Date of Printing: 3 October 2022.

ST. GEORGE'S  
MANSIONS  
WEBSITE





Studioart's Bijou Leatherwall combines top Italian craftsmanship with contemporary aesthetics

Studioart's Bijou Leatherwall combines top Italian craftsmanship with contemporary aesthetics to bring a fresh and stylish feel to interior spaces. The soft texture of Bijou Leatherwall, coupled with its metallic details, allows the entire piece to stand the test of time, creating a perennial aesthetic. The seemingly random placement of the design, reminiscent of precious gemstones, adds to the elegance of the interior.

The Ajiro Burst of Happiness wallcovering by Maya Romanoff, co-created with Jeffrey Beers International, was designed with the concept of ecstatic happiness in mind, with the hand-inlaid paulownia planks being laser-cut to incorporate a hexagonal pattern. It comes in ten colours to create greater flexibility in matching with different home furnishings.

Besides the walls, we can also choose furniture with exquisite fabric coverings. Made from pure cotton, Rubelli's Saint-Etienne fabric is festooned with diagonal ribbons in different colours for a stunning three-dimensional effect.

Pollack's Ebru fabric is another product to consider. Ebru, which means marble in Turkish, has a lustrous yet modern side.

## Brocade textiles

### 錦衣華服

When decorating a home, we need to consider both aesthetics and practicality, and the two can work in tandem, creating a home that is both beautiful and comfortable. In a large home, the wall is the largest space, making it an excellent place for us to show our taste. In addition, we can also choose colourful furniture or furnishings to add more vitality to the home.

佈置家居時，我們多會考慮美感與實用。然而，兩者並不互相衝突。如能好好結合兩者，更可令家居變得更美觀及舒適怡人。在偌大的家居，牆壁是最大的佈置空間，更是我們展示品味的好地方。此外，我們亦可以選擇色彩斑斕的家具或擺設，為家居多添生氣。

Rubelli's Saint Etienne fabric is festooned with diagonal ribbons





Pollack's Ebru fabric can be used in both conservative settings and trendy occasions

This unique pattern can be used in more conservative settings, but is equally suitable for more trendy occasions.

Finally, consider adding an embroidered cushion to your home. TREE's cushions originate from India and are carefully woven by artisans, adding floral and plant patterns to the space to create a fresh new look. The cushions are available in a variety of designs, including autumnal trees reflecting the transformation of green foliage to shady lattice branches, adding a natural touch to interior spaces.



Originating from India, these cushions add floral and plant patterns to the space to create a fresh new look

Studioart's Bijou Leatherwall 結合了意大利頂尖工藝及當代美感，為室內空間帶來新穎的時尚感。Bijou Leatherwall 質感柔軟，加上其金屬細節，令整個作品經得起時間的考驗，留下永恒的美感。看來隨意擺放的設計，令人聯想起的珍貴的寶石，令室內更為優雅。

Maya Romanoff 的產品 Ajiro Burst of Happiness wallcovering，是與 Jeffrey Beers International 共同創作。此作品以狂喜為設計理念，手工鑲嵌的桐木板經過鐳射切割，令箔融入六角型圖案當中。作品有十種顏色供選擇，方便配合不同家居佈置。

除了牆壁，我們亦可以挑選有精美布藝包裝

的家具。Rubelli's Saint-Etienne fabric 以純綿製成，這款作品以不同顏色的斜絲帶製作，帶出令人讚嘆的三維效果。

另一產品為 Pollack's Ebru fabric。Ebru 在土耳其語中意為大理石花紋，既有光澤但也有時髦的一面。此獨特的圖案可以在較保守的環境使用，但用於較時尚的場合同樣得宜。

最後，可以考慮為家居添置一刺繡墊子。TREE 推出的墊子源於印度，經工匠精心編織而成，為空間添置花卉植物圖案，予人煥然一新之感。墊子有多款設計可供選擇，包括映照落葉的秋天樹木及綠樹成蔭花邊，為室內空間加添自然氣息。

The Ajiro Burst of Happiness wallcovering is designed with the concept of ecstatic happiness in mind



The soft texture of Bijou Leatherwall, coupled with its metallic details, allows the entire piece to stand the test of time





★  
指定代理  
APPOINTED AGENT

## Flawless Elegance — Detached House

完美無瑕 — 典雅高尚 新穎獨立屋

Occupying a serene location facing breathtaking sea view, this extremely rare 2-storey detached house boosts brand new decorations with perfect privacy.

Featuring traditional European architecture and a well-designed layout, this high-ceilinged house is furnished with elegant style. Outside, a spectacular open area including a large private swimming pool is a perfect place to host outdoor parties and gatherings.

這極新穎獨立屋，稀有二層氣派的全新建築，坐落於銀線灣最頂級私隱寧謐的山頂地段，享全海景及高度私隱。

非凡歐洲建築風格，設計佈局井井有條，陽光滿溢高樓底，享高雅氣派。戶外空間充裕，連私家偌大游泳池，是舉辦戶外派對和聚會的完美地方。

Extremely Rare — Newly Detached House On the peak overlooking Silverstrand

極罕有新穎獨立屋 — 居高臨下俯瞰銀灣美景

4 bed (3 En-suite), 4 bath, private gates and garage for 4 cars

Saleable 實用面積 2,343 s.f.

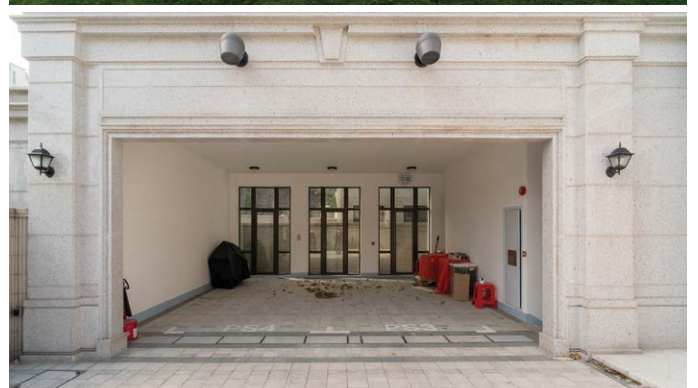
Self-owned Garden 入契花園 2,972 s.f.

Sale 售 \$148,000,000

Inquiries 查詢 ☎ 6535 2866 Mr. Lai 黎先生

Property No. 物業編號 CWBSS-SP-2103

Welcome agent's inquiries 歡迎同業查詢





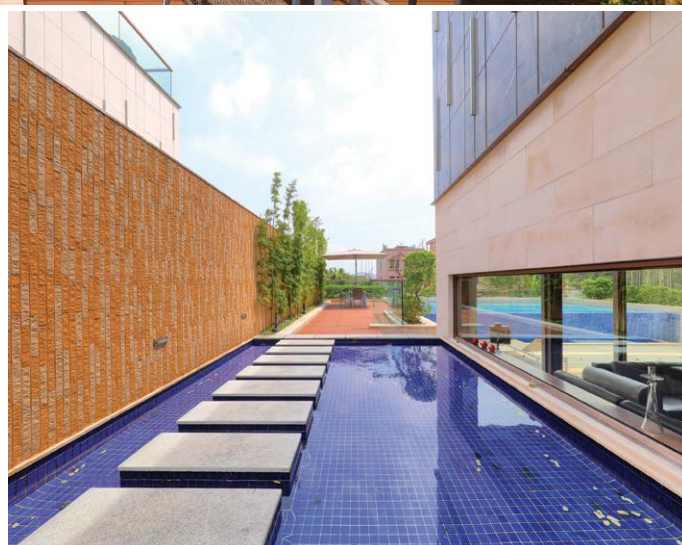
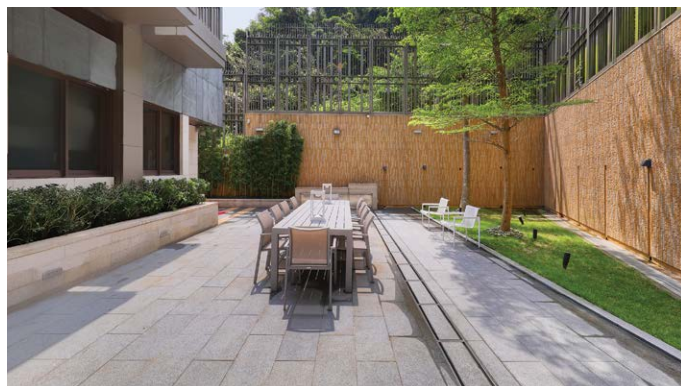
## Silverstrand Private Pool — Rare Single Number Detached House

北水南山 — 銀線灣 獨立No.屋

This graceful house is a perfect example of an upscale lifestyle where residents can enjoy great privacy, greenery, tranquility, and a peaceful sea view. With a north-facing sea view and south-facing mountain view, this house encompasses an attribute that is deemed great Feng Shui in Chinese tradition.

Boasting five ensuites, the 3,666 s.f. (saleable area) house has five-and-a-half bathrooms, a combined living and dining room, a family room, a study room, a private lift connecting every storey, and a huge private garage for six cars. It also boasts lofty ceilings with excellent internal upkeep and a fully fitted and equipped kitchen.

The most striking feature of this house is its private swimming pool. Additionally, the private self-owned 4,246 s.f. enormous garden and roof serve as a haven for residents, allowing them to enjoy privacy and serenity at home.



此優美獨立街號全獨立屋，結合了私隱絕密、翠綠美景、愜意寧靜及怡人海景，展示何謂高尚的生活方式。大宅北望海景，南靠群山，一直是中國傳統以來「北水南山」的風水寶地。

全獨立大宅屋，面積達3,666平方呎，提供五間套房、五間半浴室、相連及超高樓底的客飯廳、家庭房、書房、連接各樓層的升降機及可容納六部座駕的巨大車庫。另外，大宅有優質保養，樓底極高之餘廚房亦設備齊全。

另外，大宅最令人矚目之處是其私家游泳池。大宅的巨型入契花園（4,246平方呎）及天台，提供在家享受私隱寧靜的美好時光。

Extremely Rare Single No. Detached House  
極罕有私人街號獨立屋

5 bed (5 En-suites), 5.5 bath, exclusive garage for 6 cars

Saleable 實用面積 3,666 s.f. Garden 花園面積 4,246 s.f.

Roof Top 天台 1,187 s.f. Garage 車庫面積 1,861 s.f.

Sale 售 \$178,000,000 \$160,000,000

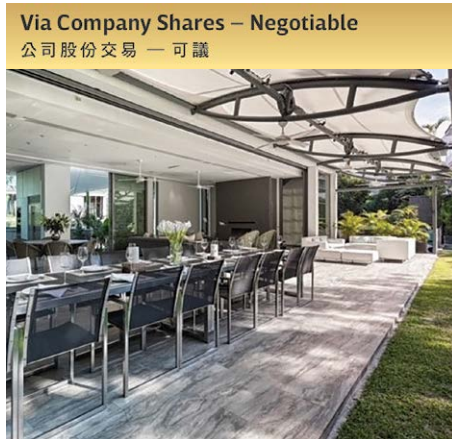
Inquiries 查詢 ☎ 6535 2866 Mr. Lai 黎先生

Property No. 物業編號 70543

Welcome agent's inquiries 歡迎同業查詢

**SALE 出售**

**Sai Kung & Clear Water Bay** 西貢及清水灣



### A Charming Single Lot House (5 mins walk to the beach)

清水灣全新魅力型格 — 獨立地段

4 beds (2 En-suites), 5 baths, 3-4 cars (In a convenient and quiet part of Clearwater Bay)

Extraordinary single lot glass house with contemporary interior design, a massive garden and a private swimming pool, gated wall offering a high degree of privacy & sea view  
全獨立的玻璃城堡式海景大屋，優雅簇新潮流時尚設計，此獨立地段連寬敞的入契花園及私家游泳池，獨立高牆大大提升大屋的私隱度，地段只需5分鐘，徒步直達海濱

**Saleable 實用** 3,133 s.f.      **Site Area 地段面積** 9,569 s.f.

**Sale 售** \$128,000,000

**Inquiries 查詢** ☎ 6535 2866 Mr. Lai 黎先生

**Property No. 物業編號** CWB-SS-W-2202



### Silverstrand — Panoramic Sea View, Dream House

銀線灣 — 珍藏之選，一見難忘層層全海屋

Serene location, in “Core Silverstrand”. Small development with breathtaking full sea views for each floor. Private garden, garage & great potential

銀灣核心寧謐地段，永無阻擋天連海，海連天環迴全景盡覽無遺，優閒簡約別墅屋苑，擁獨立花園車庫天台，優質潛力巨大，超值收藏之選

**Saleable 實用** 1,583 s.f.

**Sale 售** \$66,000,000

**Inquiries 查詢** ☎ 6535 2866 Mr. Lai 黎先生

**Property No. 物業編號** CWB-PSS-V-2202



Via Company Shares – Negotiable

公司股份交易 — 可議



### Rarely Detached House — Direct Waterfront

全獨立海濱別墅 — 灣畔海邊屋

4 bed (2 Ensuites), 4.5 bath, private terrace & garden direct access to the sea

A place of serenity awaits. Breathing in all Mother Nature has to offer. The setting is in front, with direct access to the sea. Unique detached house with modern design and charming fit-out. Inspiring architecture and resort living

鄉郊逸意全獨立屋，漁村淨土威尼斯海邊屋，揉合時尚現代風格，潮流精品建築

**Saleable** 實用 2,100 s.f. + **Private terrace & garden** 獨立花園 連接海濱

**Sale** 售 \$43,800,000 Negotiable 商議

**Inquiries** 查詢 ☎ 6535 2866 Mr. Lai 黎先生

**Property No.** 物業編號 CWBTWK-2210



### In a Serene Enclave — Just off CWB Country Club

優閒樂土 — 清水灣鄉村俱樂部

4 bed (2 Ensuites), 3.5 bath, 2 fixed cars, private terrace & garden

Cosy Colonial Style Development: Total 12 blocks, 3-storey house with gated security. Communal swimming pool, Tennis court, Huge lawn waterfront garden, private beachside & facilities. Bright & airy in a serene enclave, with lovely green & sea views. Excellent interior

緊鄰清水灣鄉村俱樂部，罕有殖民地式低密度屋苑，總建12幢三層高別墅，封閉式私密保安，屋苑專屬廣闊度假海旁園林，巨型草坪泳池，草地網球場，私人海濱及設施，優雅魅力全美感裝修

**Saleable** 實用 2,100 s.f. **Sale** 售 \$46,000,000 \$40,000,000

**Inquiries** 查詢 ☎ 6535 2866 Mr. Lai 黎先生

**Property No.** 物業編號 CWB-CC\_2207





## Contemporary Garden House — In the heart of city

九龍塘 — 城中淨土  
時尚亮麗型格別墅

Situated in the heart of Kowloon Tong, this contemporary three-ensuite house offers residents their own private outdoor space in a quiet location.

In addition to the ensuites, the house comprises four bathrooms, two powder room, a combined living and dining room, a maid's room, a utility room, a family room, a study room, a private garden and rooftop, and a garage for two cars. In excellent internal condition, the house is tastefully decorated with lofty ceilings.

Situated in a low density upscale residential area, several renowned local and international schools are nearby.



此位於九龍塘核心，擁有三間套房的洋房，為住戶於寧靜的社區提供專屬的私人空間。

洋房亦提供四間浴室、兩個化妝間、相連的客飯廳、家傭房、多用途房、書房、私家花園及天台和可容納兩部坐駕的車庫。單位內部簇新時尚，同時有時尚亮麗的裝修，樓底高而氣派不凡。

洋房位於低密度的高尚住宅區，知名的本地及國際學校林立。



Contemporary townhouse in Kowloon Tong  
九龍塘當代時尚洋房

3 en-suite, 1 study, 4 bath, 2 powder room  
Lovely wooden deck garden (with sizeable storage),  
roof top and garage (2 cars)

**Saleable** 實用 2,354 s.f. (+ private garden & Yard 1,157 s.f.)

**Lease** 租 \$120,000 incl. \$108,000 incl.

**Inquiries** 查詢 ☎ 6535 2866 Mr. Lai 黎先生

**Property Search No.** 物業搜尋編號 208218







### Family house in Pokfulam

薄扶林家庭式洋房

**5 bed, 4 bath, 1,133 s.f. garden & 456 s.f. roof, 1 car park**

Highly sought after 5-bedroom house with ample alfresco space in tranquil location

受歡迎五房洋房，享充足戶外空間，地段清幽

**Saleable** 實用 1,966 s.f.

**Lease** 租 \$110,000 incl.

**Inquiries** 查詢 ☎ 9021 1270 Annie Lee 李小姐

**Property Search No.** 物業搜尋編號 38616



### Practical apartment in Midlevels East

東半山實用單位

**3 bed, 3.5 bath, 2 car parks**

Large and spacious 3-bedroom apartment with peaceful green and city views in a serene location

偌大寬敞三房單位，坐擁怡人翠綠及城市美景，地段寧靜

**Saleable** 實用 2,344 s.f.

**Lease** 租 \$120,000 incl.

**Inquiries** 查詢 ☎ 9020 1583 Michelle Chung 鍾小姐

**Property Search No.** 物業搜尋編號 103009





### Grand harbour view apartment in Midlevels West

西半山維港美景住宅

5 bed, 3.5 bath, 3 car parks

Large 5-bedroom apartment ideal for a family overlooks a spectacular view of Victoria Harbour

偌大五房住宅，適合家庭，俯瞰維港優美景色

**Saleable** 實用 2,691 s.f.

**Lease** 租 \$120,000 incl.

**Inquiries** 查詢 ☎ 9020 1583 Michelle Chung 鍾小姐

**Property Search No.** 物業搜尋編號 193568



### Waterfront residence in Pokfulam

薄扶林臨海住宅

4 bed, 4 bath, 1 car park

Full sea view 4-bedroom apartment with comprehensive clubhouse facilities

全海景四房住宅，連完善會所設施

**Saleable** 實用 2,667 s.f.

**Lease** 租 \$158,000 incl.

**Inquiries** 查詢 ☎ 9020 1583 Michelle Chung 鍾小姐

**Property Search No.** 物業搜尋編號 100660





### Enormous garden house in Deep Water Bay

深水灣大花園洋房

**5 bed, 5.5 bath, 154 s.f. terrace, 2,396 s.f. garden & 288 s.f. roof, 2 car parks**

Superb 5-ensuite house with private massive garden and expansive sea view in prestigious location

奢華五套房洋房，連私家偌大花園及一望無際海景，地段顯赫

**Saleable** 實用 5,578 s.f.

**Lease** 租 \$480,000 incl.

**Inquiries** 查詢 ☎ 6535 9918 Josephine Yuen 阮小姐

**Property Search No.** 物業搜尋編號 32942



### Waterfront duplex in Repulse Bay

淺水灣臨海住宅

**3 bed, 3.5 bath, 1 car park**

Stylish low-rise duplex unit with a sweeping view of Repulse Bay beach

時尚低密度複式單位，享淺水灣海灘一覽無遺的美景

**Saleable** 實用 3,463 s.f.

**Lease** 租 \$160,000 incl.

**Inquiries** 查詢 ☎ 9021 1270 Annie Lee 李小姐

**Property Search No.** 物業搜尋編號 44023





Rare harbour view apartment at The Peak  
山頂罕有維港景住宅

3 bed, 1 study, 3 bath, 1 car park

Modern apartment with elegant designed decorations enjoys a fantastic Victoria Harbour view

簡約時尚住宅，裝修優雅，維港迷人景色盡收眼底

**Saleable** 實用 2,203 s.f.

**Lease** 租 \$170,000 incl.

**Inquiries** 查詢 ☎ 9020 1583 Michelle Chung 鍾小姐

**Property Search No.** 物業搜尋編號 110595



Garden house at The Peak  
山頂花園洋房

4 bed, 3 bath, 1 car park

Extravagant 4-bedroom house with ample outdoor space in a quiet location

奢華四房洋房，享充足戶外空間，地段清幽寧靜

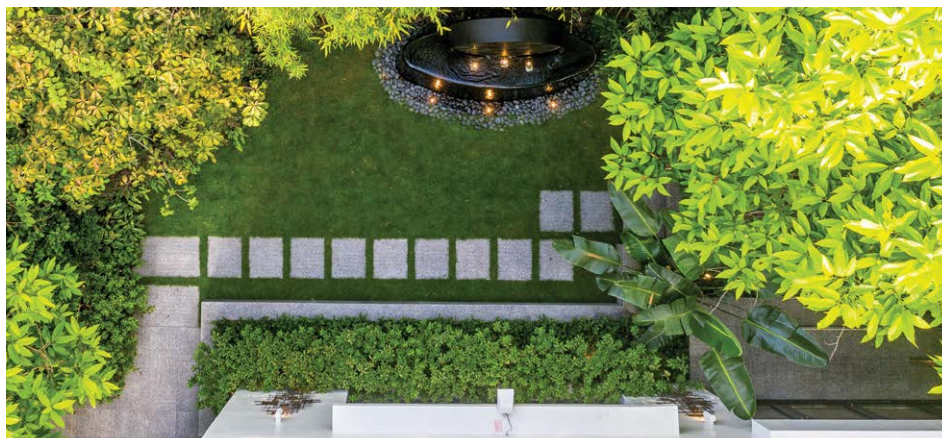
**Saleable** 實用 2,882 s.f.

**Lease** 租 \$260,000 incl.

**Inquiries** 查詢 ☎ 9027 2100 Louis Wong 黃先生

**Property Search No.** 物業搜尋編號 7974





### Three-storey Luxurious House with Courtyard on Braga Circuit

布力架街華麗家居

**4 ensuite bedrooms, spacious covered garage (2 vehicles)**

Grandiose three-storey sizable house with generous living & dining area opening up to garden and fully equipped kitchen

尊貴三層偌大洋房，提供寬敞客廳，連私家花園，廚房設備齊全

**Saleable** 實用 5,906 s.f.

**Lease** 租 \$380,000 excl.

**Inquiries** 查詢 ☎ 9027 2100 Louis Wong 黃先生

**Property No.** 物業編號 10002



### Southside seaview townhouse close to Deep Water Bay

南區海景洋房 毗鄰深水灣

**5 bed, 3.5 bath, 580 s.f. terrace & 960 s.f. garden, 1 garage**

Massive townhouse with clean and sleek designs enjoys a fantastic sea view of Deep Water Bay in a prestigious location

偌大寬敞洋房，配以簡潔俐落裝修，飽覽深水灣迷人海景，地段顯赫

**Saleable** 實用 3,876 s.f.

**Lease** 租 \$280,000 incl.

**Inquiries** 查詢 ☎ 9021 1270 Annie Lee 李小姐

**Property Search No.** 物業搜尋編號 2028





### Two-storey Contemporary House on Kadoorie Avenue

嘉道理道尊貴洋房

3 ensuite bedrooms, expansive light filled open floor plan

Sizable living & dining area opening up to front garden, fully equipped European gourmet kitchen

寬敞客飯廳連偌大花園，廚房設備齊全

**Saleable** 實用 3,890 s.f.

**Lease** 租 \$320,000 excl.

**Inquiries** 查詢 ☎ 9027 2100 Louis Wong 黃先生

**Property No.** 物業編號 21000



### Victoria Harbour view apartment at The Peak

山頂維港景住宅

5 bed, 3 bath, 1 car park

Superb 5-bedroom apartment overlooks a magnificent view of Victoria Harbour

奢華五房住宅，俯瞰維港優美景色

**Saleable** 實用 2,665 s.f.

**Lease** 租 \$290,000 incl.

**Inquiries** 查詢 ☎ 9027 2100 Louis Wong 黃先生

**Property Search No.** 物業搜尋編號 21589





**Magnificent modern house at The Peak**

山頂氣派時尚洋房大宅

**3 bed, 3.5 bath, 2,227 s.f. garden & 1,013 s.f. roof, 3 car parks**

Enormous house with massive floor-to-ceiling windows and ample alfresco space enjoys a bird's eye view of Victoria Harbour

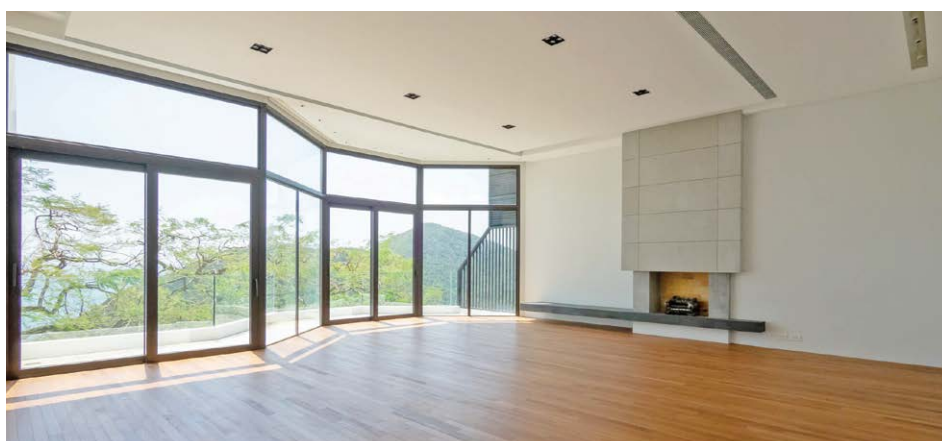
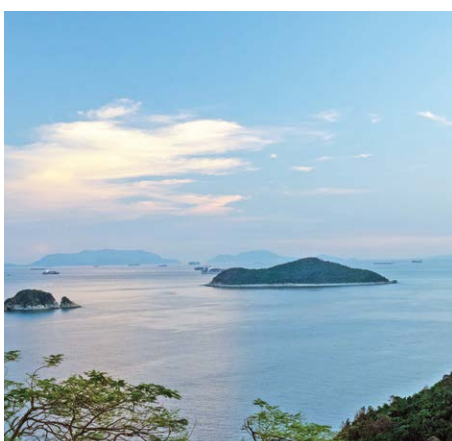
巨型洋房大宅，連寬闊落地大玻璃窗及充足戶外空間，鳥瞰維港美景

**Saleable** 實用 3,204 s.f.

**Lease** 租 \$350,000 incl.

**Inquiries** 查詢 ☎ 9027 2100 Louis Wong 黃先生

**Property Search No.** 物業搜尋編號 106650



**Rare and prestigious house in Repulse Bay**

淺水灣極罕有尊貴獨立洋房

**5 bed, 5.5 bath, private garage (can park 4 cars)**

Exceptional townhouse with modern décor and private lift overlooking stunning views of Repulse Bay, Deep Water Bay and Middle Island

尊貴洋房，裝修設計時尚，設私家升降機，俯瞰淺水灣、深水灣及巽波洲壯麗海景

**Saleable** 實用 4,204 s.f.

**Lease** 租 \$390,000 incl.

**Inquiries** 查詢 ☎ 9027 2100 Louis Wong 黃先生

**Property Search No.** 物業搜尋編號 4765





### Waterfront house in Repulse Bay

淺水灣臨海洋房

**4 bed, 3 bath, 1111 s.f. terrace, 1,149 s.f. garden & 592 s.f. roof, 2 car parks**

Popular 4-bedroom garden house enjoys a spectacular sea view

受歡迎四房花園洋房，眺望遼闊海景

**Saleable** 實用 2,818 s.f.

**Lease** 租 \$220,000 incl.

**Inquiries** 查詢 ☎ 9021 1270 Annie Lee 李小姐

**Property Search No.** 物業搜尋編號 11814



## Vibrant neighbourhood 動感都市

Undoubtedly, properties located at prime locations offer an upscale life. This bright and airy four-bedroom apartment not only demonstrates this concept but also provides great convenience to home seekers hoping to rent an apartment.

On the balcony, residents can enjoy the impeccable Hong Kong city view, a feature that other properties can hardly compare with.

A relatively new development in the area, this residential building is conveniently connected by the Mid-levels escalators, enabling residents to enjoy the vibrant city within close walking distance.

位於優越地段的貴重物業，無疑為住戶帶來高尚的生活方式。此四房單位明亮而空氣流通，更是有意租住物業人士的理想選擇。

住戶可在露台享受本港的醉人城市景色—此特色絕對是其他物業難以媲美。

這住宅大廈是區內較新的物業，而且鄰近半山扶手電梯，方便住戶步行來往繁華的市區。

**Meticulously designed apartment in Midlevels West**  
西半山高雅裝修住宅

**4 bed, 5 bath, 1 car park**

**Saleable** 實用 2,286 s.f.

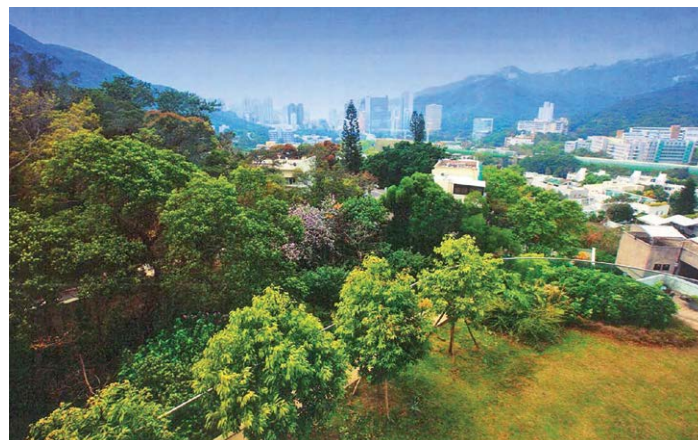
**Lease** 租 \$170,000 incl.

**Inquiries** 查詢 ☎ 6607 2082 Stephen Chan 陳先生

**Property Search No.** 物業搜尋編號 175642







**Grand house in Repulse Bay 淺水灣尊貴洋房**

**5 bed, 6 bath, private garden, swimming pool, 1 garage (2 cars)**

Sumptuous 5-ensuite house with private swimming pool overlooks expansive and stunning views of Deep Water Bay, Middle Island and Repulse Bay

豪華五套房洋房，連私家游泳池，俯瞰遼闊深水灣、熨波洲和淺水灣壯麗景色

**Saleable 實用** 4,571 s.f.

**Lease 租** \$780,000 incl.

**Inquiries 查詢** 📞 9027 2100 Louis Wong 黃先生

**Property Search No. 物業搜尋編號** 165353



**3 huge detached houses in southsides (For lease altogether)**

南區3間巨型洋房 (3間一併出租)

Huge private garden, outdoor and indoor pool, an internal lift respectively and communal basement car parking spaces

偌大私家花園、戶外和室內游泳池、升降機，公共地庫提供多個停車位

**Saleable 實用 Total 合共:** 22,151 s.f.

**Lease 租** Open Offer

**Inquiries 查詢** 📞 9027 2100 Louis Wong 黃先生

**Property No. 物業編號** 167930



**Extravagant apartment in Midlevels Central**

中半山奢華住宅

**5 bed, 4.5 bath, 2 car parks**

Generous 5-bedroom apartment with a fantastic harbour view

偌大五房單位，眺望迷人海景

**Saleable 實用** 4,715 s.f.

**Lease 租** \$500,000 excl.

**Inquiries 查詢** 📞 9027 2100 Louis Wong 黃先生

**Property Search No. 物業搜尋編號** 20870





## 5-bed (4 en-suites) choice at Shiu Fai Terrace

### 肇輝台五房四套首選

Chantilly is located in Mid-Levels East, an exclusive and sophisticated neighbourhood only a short walking distance from Causeway Bay, and Wanchai. Close to Bowen Road fitness trail, plenty of mini-bus nearby provides the residents with efficient and convenient transportation to Causeway Bay. All apartments are in an excellent internal condition and viewing by appointment.

肇輝臺6號位於東半山傳統豪宅區，舉步可達銅鑼灣及灣仔。鄰近寶雲道健身徑，大廈附近亦有專線小巴服務直達銅鑼灣，相當方便。單位交樓標準一流，歡迎預約參觀。



**Penthouse A with internal staircase to roof**  
頂層A單位連內置樓梯往天台

**5 bed, 4 ensuite, 2,220 s.f. roof, 2 car parks**

**Saleable 實用** 2,816 s.f.

**Lease 租** \$350,000 incl.

**Property No. 物業編號** 136290

**Unit 6A / 單位6A**

**5 bed, 4 ensuite, 1 car park**

**Saleable 實用** 2,704 s.f.

**Lease 租** \$135,000 incl.

**Property No. 物業編號** 136282

**Unit 11B / 單位11B**

**4 bed, 4 ensuite, 1 car park**

**Saleable 實用** 2,805 s.f.

**Lease 租** \$135,000 incl.

**Property No. 物業編號** 136298

**Inquiries 查詢** ☎ 6535 9918 Josephine Yuen 阮小姐



### Newly built residential building in Sumida-ku, Tokyo 東京墨田區全新住宅大廈

- Reinforced concrete 5-storey building with total 18 units
- 4-min walking distance to Oshiage Station, close to the landmark architecture, Tokyo Skytree
- Gross internal area 536.44 sq m (5,774 s.f.) completed in April 2022
- Freehold
- 鋼筋混凝土5層建築，合共18個單位
- 距離押上站僅4分鐘步程，毗鄰地標建築東京晴空塔
- 內部總面積536.44平方米（5,774平方呎），大廈於2022年4月竣工
- 永久業權

Guide Price  
指標價

JPY 557,000,000 (tax incl 連稅)  
(equivalent to HK\$30,000,000)

Property No. JPI300



### Newly built residential building in Higashi Nihonbashi, Tokyo 東京東日本橋全新住宅大廈

- Reinforced concrete 12-storey building with total 13 residential units and 1 shop
- Convenient yet tranquil location, 2-min walking distance to Higashi Nihonbashi Station
- Gross internal area 640.96 sq m (6,899 s.f.), completed in July 2022
- Freehold
- 鋼筋混凝土12層建築，合共13個住宅單位和1個鋪位
- 位於靜中帶旺的地段，距離東日本橋站僅2分鐘步程
- 內部總面積640.96平方米（6,899平方呎），大廈於2022年7月竣工
- 永久業權

Guide Price  
指標價

JPY 835,000,000 (tax incl 連稅)  
(equivalent to HK\$45,000,000)

Property No. JPI400

ENQUIRIES 查詢

WhatsApp 2152 4888 KS Koh 許先生 ks.koh@landscape.com



### Extremely rare Bond Street flagship retail 倫敦Bond Street極罕有旗艦物業

- Unique corner positioning with predominant glass frontages, close to the new Bond Street/Hanover Square Crossrail station
- Arranged over five floors totaling 8,633 sq ft of retail and office accommodation
- Impressive HQ retail premises offering a number of options
- Virtual Freehold
- 大單邊轉角位，鄰近新建Bond Street和Hanover Square兩個橫貫鐵路站
- 物業共五層，總面積8,633平方呎包括零售和辦公室
- 令人印象深刻的零售總部物業
- 近乎永久業權

#### 如何購買英國商業物業

英國商業物業較住宅能提供更長，更穩定和更高的租金回報；卻可以比住宅更容易管理。但如何入手？有哪些事項要注意？英國與香港市場的分別在哪裡？由豐富實戰經驗的皇家特許測量師提供免費一對一諮詢。

Commercial properties in the UK provide opportunities for overseas investors with long, stable rental income and higher yields than residential properties; still they can be easier to manage than residential. But how to invest? What do you need to know before purchase? What are the differences between UK and HK markets? We are pleased to provide free, one-to-one consultation.

**Guide Price**  
指標價

Upon Request

Property No. 4800



### Prime high street retail anchored by McDonald's in Exeter 麥當勞錨定零售投資機會

- Located in an attractive and bustling area of Exeter with an exceptional amount of footfall
- Comprising 18,617 sq ft arranged over basement, ground and two upper floors
- Let to McDonald's (76%) and The Works (24%) at a total passing rent of £250,000 p.a.
- Freehold
- 物業位於埃克塞特市迷人而繁華的地區，人流興旺
- 面積18,617平方呎，提供地庫、地面層和兩層上層
- 由麥當勞（76%）和The Works（24%）承租，年租金總收入250,000英鎊。
- 永久業權

**Guide Price**  
指標價

£3,915,000

**Net Yield**  
淨收益率

c. 6.0%

Property No. 6205

**ENQUIRIES 查詢**  
WhatsApp  2152 4888 KS Koh 許先生 ks.koh@landscape.com



### Rare prime freehold investment in Covent Garden, London

倫敦柯芬園罕見的優質永久業權投資

- Located in Covent Garden, a renowned entertainment and cultural hub in London's West End
- Mid-terrace building comprising 1,047 sq ft arranged over basement and ground floor, with valuable outdoor seating
- Single-let on a new lease to renowned seafood restaurant at a passing rent of £55,000 p.a.
- Freehold

- 物業位於倫敦西區著名的娛樂和文化中心柯芬園
- 物業面積1,047平方呎包括地庫和地面層，另罕有戶外座位
- 由著名海鮮餐廳新簽10年租約，年租金總收入55,000英鎊
- 永久業權

**Guide Price** £1,150,000  
指標價

**Net Yield** c. 4.5%  
淨收益率

Property No. 2761



### Iconic freehold property with long lease in Camden, London

倫敦遊客必到Camden標誌性永久業權物業

- Situated in the heart of the district's leisure and entertainment pitch of Camden
- Historic entertainment venue totaling 9,000 sq ft arranged over basement, ground and three upper floors
- Single-let to The Jazz Café, an award-winning music venue, until 2047 at a passing rent of £275,000 p.a.
- Freehold

- 物業位於康登區內遊客必到休閒及娛樂地段的中心地帶
- 物業是歷史悠久的爵士樂餐廳，總面積達9,000平方呎，提供地庫、地面層及三層上層
- 由屢獲殊榮的音樂場所The Jazz Café單一承租至2047年，年租金總收入275,000英鎊
- 永久業權

**Guide Price** £6,150,000  
指標價

**Net Yield** c. 4.3%  
淨收益率

Property No. 3219

ENQUIRIES 查詢

WhatsApp  2152 4888 KS Koh 許先生 ks.koh@landscape.com



### Prime and secure Sainsbury's-anchored retail in Bristol 布里斯托Sainsbury's超市錨定長約投資

- Rare opportunity to acquire a 100% prominent corner property on the historic local high street of Gloucester Road
- Welcoming and well-configured building of 6,455 sq ft
- Long let to Sainsbury's (86%) and a local F&B business (14%) at a total passing rent of £92,500 p.a.
- Freehold
- 位於歷史悠久的商業街 Gloucester Road 上最顯眼大單邊轉角位
- 面積6,455平方呎，間隔四正
- 由Sainsbury's超市（86%，長約）和一家餐飲企業（14%）承租，年租金總收入92,500英鎊
- 永久業權

**Guide Price**                      £1,560,000  
指標價

**Net Yield**                              c. 5.5%  
淨收益率

Property No. 7154



### Decathlon-anchored prime mixed-use investment in Liverpool 利物浦Decathlon錨定優質商業旗艦物業

- Situated in a 100% prime retail location with excellent communications
- Attractive, prominent flagship store totaling 79,954 sq ft arranged over basement, ground and five upper floors
- Let to Decathlon (64% income), Store Away and Hijingo at a total passing rent of £856,170 p.a.
- 999-year leasehold and 150-year leasehold
- 物業位於100%的黃金地段，交通網絡完善
- 總面積達79,954平方呎的精美旗艦店，提供地庫、地面層和五層上層
- 由Decathlon（64%收入）、迷你倉及娛樂場承租，年租金總收入856,170英鎊
- 999年租賃權和150年租賃權

**Guide Price**                      £8,900,000  
指標價

**Net Yield**                              c. 9.0%  
淨收益率

Property No. 2551

**ENQUIRIES 查詢**  
 6024 2038 Calvin Tse 謝先生 calvin.tse@landscape.com



### Prime retail investment with newly extended lease 新簽續約優質零售投資

- Situated in the affluent and historic cathedral city of Norwich
- Large, modern well configured retail store comprising 15,574 sq ft arranged over ground and two upper floors
- Single-let to Waterstones under an extended lease until 2030 at a rent of £350,000 p.a.
- Freehold
- 物業坐落於富裕而歷史悠久的大教堂城市諾域治
- 大型現代化零售店，面積15,574平方呎，提供地面層和兩層上層
- 由Waterstones新續租約至2030年，年租金總收入350,000英鎊
- 永久業權

**Guide Price** £4,100,000  
指標價

**Net Yield** c. 8.0%  
淨收益率

Property No. 5016



### Highly secure Tesco store with long lease 穩健Tesco超市長約

- Located in a vibrant retail and leisure hub of Plymouth city centre
- Extensive corner building totaling 87,107 sq ft arranged over basement, ground and three upper floors
- Single-let to Tesco Stores Limited for 31 years (no break) at current rent of £400,000 p.a.
- 999-year leasehold
- 物業位於普利茅斯市中心充滿活力的零售和休閒中心
- 寬敞的單邊轉角位建築，總面積為87,107平方呎，提供地庫、地面層和三層上層
- 由Tesco超市單一承租31年（不可中止），年租金總收入400,000英鎊
- 999年租賃權

**Guide Price** £6,310,000  
指標價

**Net Yield** c. 5.4%  
淨收益率

Property No. 3309

ENQUIRIES 查詢

 6024 2038 Calvin Tse 謝先生 calvin.tse@landscape.com



DESIGN FOR LOVE

# ADO CASA PRESTIGE INTERIORS

**50% OFF**  
FOR DESIGN FEE



BEGIN OUR RELATIONSHIP

☎️ 📞 6607 0020

ADOCASA.COM

