

Highlight
Repulse Bay
淺水灣

Spotlight
UK Properties
英國物業

Feature
Festive atmosphere
佳節氣氛

領域
LANDSCOPE

獨家代理
SOLE AGENT



Palatial lifestyle

王者享受

Luxuriously decorated, this 3-storey house offers magnificent views of Repulse Bay, Deep Water Bay, and Middle Island with opulent design.

Boasting four bedrooms (including three ensembles), it also has four-and-a-half bathrooms, a separated living and dining room, three maid's rooms, a utility room, a family room, two balconies, a private lift, and a private gate with parking space for 4-6 cars.

The awe-inspiring double-height living room leads to a secluded terrace that takes in fantastic views. Additionally, the ample outdoor space is ideal for alfresco dining and entertaining.

Prestigious house in Repulse Bay

淺水灣極罕有洋房

4 bed, 4.5 bath, Approx. 2,500 s.f. garden/terrace,

Approx. 1,700 s.f. roof, parking space (4-6 cars)

Saleable 實用 5,506 s.f.

Sale 售 \$800,000,000 \$690,000,000 (Negotiable)

Inquiries 查詢 9027 2100 Louis Wong 黃先生

Property Search No. 物業搜尋編號 20284



三層高的洋房附有奢華裝修，享壯闊的淺水灣、深水灣及熨波洲優美的景色。

洋房提供四間睡房，三間為套房，另有四間半浴室、獨立的客飯廳、三間家傭房、多用途房、家庭廳、兩個露台、私家升降機、獨立大圍及停車位（可容納4-6輛車）。

大廳樓底高達兩層，並連接清幽的平台，迷人景色盡收眼底。此外，充足的戶外空間是舉行戶外用餐和娛樂的最佳地方。





Festive decorations 佳節裝飾

As Christmas is getting closer and the festive atmosphere is becoming more palpable, many of us will want to invite friends and family to celebrate at our homes, but how should we decorate? To add some festive flair, you don't need to repaint your home from the ground up. Just by adding some small and exquisite ornaments to a Christmas tree, you can bring in some of that festive cheer in an easy-to-arrange manner that also leaves room for flexibility.

Of course, the weather is getting colder as winter approaches, and attention should be given to staying warm during the festivities to keep your body healthy to welcome the New Year, and we wish all our readers good health and good luck in the coming year.

聖誕節愈來愈近，節日氣氛也日益濃厚。我們或會邀請親朋好友到家中慶祝，不過如何佈置家居，卻難倒了不少人。要加添節日氣氛，不需要重新將家居粉飾一番。相反，在必備的聖誕樹上，加上一些小巧精美的飾物，既可為家居增加不同的色彩，也易於布置，方便我們更換不同的裝飾品。

天氣寒冷，慶祝節日時也要注意保暖，保持身體健康迎接下一年。最後，祝讀者身體健康，新年進步。

Contents 目錄

03 Southside & The Peak sale
南區及山頂 出售

04 **Monthly highlight**
Repulse Bay
淺水灣



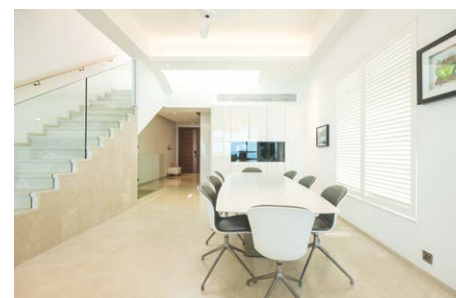
28 Midlevels East &
Happy Valley sale
東半山及跑馬地 出售

32 **Feature**
Festive atmosphere
佳節氣氛




16 **Highlight**
Shouson Hill
壽臣山


21 Midlevels Central &
West sale
中半山及西半山 出售





Follow Us 關注我們    [landscapehk](https://www.landscapehk.com)

4 Easy ways to list your property with The Key:
4個簡單方法在《大宅》刊登您的出售 / 出租物業：

 6891 3639 WhatsApp

 info@landscape.com

 2152 4818

 www.landscape.com/sell-to-let



Contents 目錄

- 36 Sai Kung & Clear Water Bay sale
西貢及清水灣 出售

- 42 **Highlight**
Stanley
赤柱

- 44 Lease
出租

- 60 Japanese Properties
日本物業

- 61 U.K. Properties
英國物業

Published and distributed by



領域房地產顧問有限公司

C-018733

Tel: +852 2866 0022

Fax: +852 2866 0015

Email: info@landscape.com


Website: www.landscape.com

Address: Units 1201-3, 12/F, Siu On Centre,
No. 188 Lockhart Road, Wanchai, Hong Kong

**Scan for
online
version**



Produced by

v i s i o n  o n e

Vision One Hong Kong Ltd

Email: info@visiononehk.com

Website: www.visiononehk.com

Advertising Enquiries:

Vision One Hong Kong Limited

Contact: josephineleung@visiononehk.com

Mobile: +852 9821 5151



The information, text, photos, analyses and projections contained herein are provided solely for the convenience of prospective clients and no warranty or representation as to their accuracy, correctness or completeness is made by Landscape Surveyors Limited, Landscape Realty Limited, Landscape International Property Agency Limited or the owners, none of whom shall have any liability or obligation with respect thereto. Interested parties should rely on their own investigations, interpretations and analyses in connection with the purchase or letting thereof.

Purchasing uncompleted properties situated outside Hong Kong is complicated and contains risk. You should review all relevant information and documents carefully before making a purchase decision. If in doubt, please seek independent professional advice before making a purchase decision. Selling Agent: Landscape International Property Agency Limited (C-089033) and Landscape Surveyors Limited (C-000715) are licensed and regulated by EAA. Our sales representatives for overseas property work exclusively in relation to properties outside Hong Kong and unless expressly stated otherwise, are not licensed under the EAA to deal with Hong Kong properties.

Information has been provided to us by sources deemed reliable, but no warranty or representation is made as to its accuracy, correctness or completeness. These offerings are made subject to contract, correction of errors, omissions, prior sale or lease, change of price or terms or withdrawal from the market without notice. The contents of The Key are for reference only and do not constitute all or any part of a contract. Copyright 2022

Can be sold via company shares transfer
可以公司轉讓股份形式買賣



Massive 6-bedroom house in Chung Hom Kok

春坎角偌大六房洋房

6 bed, 1 study, 4.5 bath, 1,000 s.f. garden, 2 car parks

Stylishly decorated 6-bedroom garden house with spacious layout in an idyllic location

六房花園洋房，裝修設計匠心獨運，間隔寬敞，地段清幽怡人

Saleable 實用 2,730 s.f.

Sale 售 \$130,000,000

Inquiries 查詢 ☎ 6535 9918 Josephine Yuen 阮小姐

Property Search No. 物業搜尋編號 121778



Can be sold via company shares transfer
可以公司轉讓股份形式買賣



Waterfront single house in Stanley

赤柱臨海獨立洋房

4 bed, 3.5 bath, 1,175 s.f. garden & 950 s.f. roof, 2 car parks

One of a kind 4-bedroom single house with ample alfresco space overlooks a sublime sea view

獨樹一幟四房獨立屋，享寬廣私家戶外空間，俯瞰壯麗海景

Saleable 實用 4,773 s.f.

Sale 售 \$290,000,000

Inquiries 查詢 ☎ 6535 9918 Josephine Yuen 阮小姐

Property Search No. 物業搜尋編號 124474





Graceful living

細膩優雅

Privacy and tranquillity are crucial requirements for many homebuyers. Here at tower 18, Hong Kong Parkview, this family-friendly apartment brings together these features in addition to its grandiose and spacious interiors.

Spanning 2,067 s.f. (saleable area), one of the most appealing features of this high floor apartment is its classy and majestic interiors with three million luxury decorations. The living and dining room, along with three ensuite bedrooms, are reconstructed with hardwood flooring

from Germany.

With ample space, the living and dining room is also suited to giving residents a chance to relax and enjoy the mountain view, and is also perfect for hosting family and friends from the comfort of the home.

Apart from the spacious living and dining room, the kitchen is also ideal for hosting guests. Fully fitted and equipped, the kitchen offers ample space for residents to prepare dishes and store kitchen appliances.

Another stunning feature of this apartment is its balcony, where residents can enjoy a mountain and city view, a feature that appeals to many homebuyers in town.

Residents can also enjoy a wide range of recreational facilities offered by Hong Kong Parkview, including a gym, indoor and outdoor swimming pools, and a tennis court, just to name a few. Located on the convenient upper Repulse Bay, there is also a supermarket within the development.





私隱與寧靜是每個有意置業人士的必要條件。此位於陽明山莊的物業，除了上述特質外，單位更為有意置業的家庭，帶來華美和寬闊的室內空間。

單位實用面積達2,067平方呎，位於18座樓皇的極高樓層，其中一個最引人入勝之處是其美不勝收的室內設計，手工細緻，高達三百萬的奢華裝修，而偌大的客飯廳及三間套房均裝有來自德國的硬木地板，可遇難求。

客飯廳可供家中不同成員及賓客享受青蔥翠綠的山景，在優美的環境前放鬆身心。此外，

美景當前更適合於舒適怡人的家中招待親朋好友。

除了偌大寬敞的客飯廳，戶主於設備充足的廚房宴客就更輕而易舉。寬闊的廚房方便戶主準備佳餚，而且更可放置各種廚具。

此外，在舒適的露台上，住戶可以遠眺山景及城市美景，如此壯麗宏大的景色正好吸引買家。

這豪華屋苑的會所面積廣達20萬呎，提供多種會所康樂設施，包括健身室、室外泳池及網球場等，各適其適。屋苑位於淺水灣頭段，交通方便，屋苑內亦設有超級市場。

Family 3-ensuite apartment
in Repulse Bay
淺水灣三套房住宅

3 bed, 3.5 bath, 1 car park

Saleable 實用 2,067 s.f.

Sale 售 \$75,800,000 \$67,800,000

Inquiries 查詢

☎ 6535 9918 Josephine Yuen 阮小姐

Property Search No. 物業搜尋編號 121461



Can be sold via company shares transfer
可以公司轉讓股份形式買賣



South-facing sea view house in Stanley 赤柱千金難買向南海景洋房

3 bed, 3.5 bath, 262 s.f. terrace & 381 s.f. garden, 2 car parks

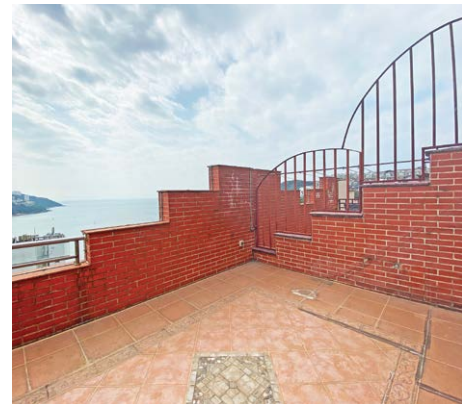
Rare 3-ensuite garden townhouse with an ample outdoor space in exclusive location
矜罕三套房花園洋房，享充足戶外空間，地段顯赫尊貴

Saleable 實用 1,956 s.f.

Sale 售 \$75,800,000 \$68,000,000

Inquiries 查詢 ☎ 6535 9918 Josephine Yuen 阮小姐

Property Search No. 物業搜尋編號 14687



Tastefully renovated apartment at The Peak 山頂品味裝修住宅

3 bed, 2 bath, 1 car park

Practical apartment with a meticulous design offers an unrivalled sea and mountain view
佈局實用住宅，設計一絲不苟，飽覽優美山巒及海景

Saleable 實用 2,643 s.f.

Sale 售 \$108,000,000 \$102,800,000

Inquiries 查詢 ☎ 6535 9918 Josephine Yuen 阮小姐

Property Search No. 物業搜尋編號 105918



SALE 出售

Southside & The Peak 南區及山頂



Highly sought after apartment in Repulse Bay

淺水灣受歡迎住宅

3 bed, 2.5 bath, 1 car park

Light and airy 3-bedroom apartment with a practical layout enjoys stunning sea and mountain views

明亮通風三房單位，間隔實用，享壯麗海景及山景，可租可售

Saleable 實用 1,390 s.f.

Sale 售 \$45,000,000 / **Lease 租** \$68,000 incl.

Inquiries 查詢 ☎ 6607 2082 Stephen Chan 陳先生

Property Search No. 物業搜尋編號 107492



Family apartment in Repulse Bay

淺水灣家庭式單位

3 bed, 2 bath, 1 car park

Spacious family home with excellent clubhouse facilities in quiet location

寬敞家庭式住宅，享優質會所設施，地段寧靜

Saleable 實用 1,886 s.f.

Sale 售 \$61,000,000

Inquiries 查詢 ☎ 9027 2100 Louis Wong 黃先生

Property Search No. 物業搜尋編號 151123





Superb sea view apartment in Repulse Bay

淺水灣奢華海景單位

3 bed, 2 bath, 1 car park

Boutique 3-bedroom apartment with a stunning view of Repulse Bay beach in prime location

精品三房單位，眺望淺水灣泳灘怡人海景，地段優越

Saleable 實用 1,513 s.f.

Sale 售 \$62,000,000

Inquiries 查詢 ☎ 6607 2082 Stephen Chan 陳先生

Property Search No. 物業搜尋編號 14046



Stylish sea view apartment in Repulse Bay

淺水灣時尚海景住宅

3 bed, 2 bath, 1 car park

3-bedroom apartment in prime location with a stunning Southside sea view

淺水灣三房單位，坐擁壯麗南區海景，地段優越

Saleable 實用 1,961 s.f.

Sale 售 \$63,800,000

Inquiries 查詢 ☎ 6607 2082 Stephen Chan 陳先生

Property Search No. 物業搜尋編號 123506




SILVER

鄰近  烏溪沙站²



相片於2022年8月23日於發展項目附近實景拍攝

- 鄰近  烏溪沙站²，坐享屯馬綫鐵路優勢
- 漫步海星灣，尊享赤門海峽及吐露港海景³
- 低密度地標式建築，特大露台，引領豪宅新典範
- 與香港聯合國教科文組織 UNESCO 世界地質公園為鄰⁴
- 匠心打造法式尊貴會所⁵，無邊際泳池⁵，感受度假式生活

SANDS

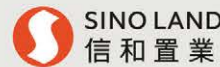
尊享低密度臨海生活³



現樓示範單位開放參觀

查詢專線：

8106 0028



發展項目的街道名稱及門牌號數：耀沙路8號 | 區域：馬鞍山 | 互聯網網站的網址：www.silversands.hk

本廣告/宣傳資料內載列的相片、圖像、繪圖或素描顯示純屬畫家對有關發展項目之想像。有關相片、圖像、繪圖或素描並非按照比例繪畫及/或可能經過電腦修飾處理。準買家如欲了解發展項目的詳情，請參閱售樓說明書。賣方亦建議準買家到有關發展地盤作實地考察，以對該發展地盤、其周邊地區環境及附近的公共設施有較佳了解。

本廣告/宣傳資料並不構成或不得詮釋或賣方作出任何不備明示或隱含之契約、陳述、承諾或保證。

1. 相片於2022年8月23日在發展項目附近拍攝並經過電腦修飾處理，僅供參考。相片所顯示的布局、間隔、規格、尺寸、顏色、用料、裝置、裝修物料、設備、家具、裝飾物、植物、園景及其他物件等未必會在發展項目或其附近範圍內出現。相片拍攝時，發展項目仍在興建中，相片並非作展示發展項目或其任何部分之落成或景觀。賣方亦保留保留有關政府部門批核的最新建築圖則修改發展項目及其任何部分的權利。相片並不構成或不得詮釋或作出任何不備明示或隱含之契約、陳述、承諾或保證。發展項目的周邊環境、建築物及設施會不時改變。賣方建議準買家到有關發展地盤作實地考察，以對該發展地盤、其周邊地區環境及附近的公共設施有較佳了解。2. 由發展項目地盤步行至馬鞍山沙田A出口預計步行時間為分鐘。預計步行時間由工作人員於2020年3月31日得出，僅供參考。實際所需時間受實際狀況限制。預計步行時間不構成或不得詮釋或賣方對發展項目作出任何不備明示或隱含之契約、陳述、承諾或保證。3. 所述之景觀可能不適用於發展項目內的所有住宅物業。發展項目住宅單位所享有之景觀受其面向、樓層、周邊建築物及環境影響。發展項目周邊的建築物、設施及環境可能不時改變。賣方建議準買家到發展地盤作實地考察，以對該發展地盤、其周邊地區環境及附近的公共設施有較佳了解。所述之景觀不構成或不得詮釋或賣方對發展項目作出任何不備明示或隱含之契約、陳述、承諾或保證。4. 資料來源：香港聯合國教科文組織世界地質公園網站 <https://www.discoverhongkong.com/itc/interactive-map/hong-kong-unesco-global-geopark.html> (最後瀏覽日期：2022年8月29日) 資料僅供參考。並不構成或不得詮釋或賣方對發展項目作出任何不備明示或隱含之契約、陳述、承諾或保證。5. 會所/發展項目及所有有關設施的臨時落成或之計畫亦可與本廣告/宣傳資料所提供者不同，並以政府相關部門最後批准之圖則為準。發展項目設施的開放時間及使用受政府許可證、相關法律、批地文件、公眾條款、會所使用守則及電訊服務所限制。此等設施於入住時未必能即時使用，並受開支額外費用。賣方保留修訂及更改會所/發展項目及所有有關設施之設計、規格、特色、圖則、用料、用途等的權利，而無須另行通知。本廣告/宣傳資料內之會所及其設施的各項僅為預覽名稱，將不會在買賣合約、轉讓契或其他業權契據中顯示。| 賣方：恒泰有限公司 | 賣方的授權公司：尖沙咀置業集團有限公司、信和置業有限公司、會道發展有限公司及晉峰有限公司 | 發展項目的認可人士：葉嘉偉 (截至2021年8月24日)、梁傑文 (2021年8月25日開始) | 發展項目的認可人士以其專業身分擔任經理人、董事或樓宇的商號或法團：昂元祥建築師事務所(香港)有限公司 | 發展項目的承建商：偉工建築有限公司 | 該發展項目中的住宅物業的出售而代收擁有人行事的律師事務所：胡關李羅律師行 | 已為發展項目的建造提供貸款或已承諾為該項建造提供融資的認可機構：恒生銀行有限公司 (備註：有關承諾已經取消) | 已為發展項目的建造提供貸款的任何其他人：會道發展有限公司 | 賣方所知的發展項目的預計開工日期：2022年10月31日 (「開工日期」指發展項目符合批地文件的條件的日期。發展項目的預計開工日期由發展項目的認可人士提供。預計開工日期是受到買賣合約所允許的任何延期所限制的。) | 賣方建議準買家到有關發展地盤作實地考察，以了解發展項目的資料。詳情請參閱售樓說明書。| 賣方為履行《一手住宅物業銷售條例》第三部高級發展項目規定的互聯網網站網址 | 本廣告/宣傳資料由賣方在賣方的同業下發布。| 印刷日期：2022年10月19日

SALE 出售

Southside & The Peak 南區及山頂

Can be sold via company shares transfer
可以公司轉讓股份形式買賣



Family 3-ensuite apartment in Repulse Bay

淺水灣家庭式三套房住宅

3 bed, 1 study, 3.5 bath, 1 car park

Precious 3-ensuite apartment with a study enjoys a peaceful view

矜罕三套房住宅，連書房，享怡人美景，可租可售

Saleable 實用 2,171 s.f.

Sale 售 \$75,000,000 / Lease 租 \$120,000 incl.

Inquiries 查詢 ☎ 9020 1583 Michelle Chung 鍾小姐

Property Search No. 物業搜尋編號 137345



Can be sold via company shares transfer
可以公司轉讓股份形式買賣



Actual view from apartment 現場實景

Rare 3-ensuite apartment in Repulse Bay

淺水灣罕有三套房單位

3 ensuite, 3.5 bath, 1 car park

Generous 3-bedroom apartment with full clubhouse facilities in a serene location

淺水灣罕有寬敞三套房單位，連完善會所設施，地段寧靜

Saleable 實用 2,067 s.f.

Sale 售 \$88,000,000

Inquiries 查詢 ☎ 9027 2100 Louis Wong 黃先生

Property Search No. 物業搜尋編號 84538





Waterfront house in Tai Tam (Mortgagee sale)

大潭上行臨海洋房（銀主盤）

4 bed, 4.5 bath, 414 s.f. garden & 480 s.f. roof, 1 car park

Luxurious waterfront 4-ensuite house with a private garden and rooftop ideal for large families

奢華臨海四套房洋房，連私家花園及天台，適合大家庭

Saleable 實用 3,314 s.f.

Sale 售 \$138,000,000

Inquiries 查詢 ☎ 6535 9918 Josephine Yuen 阮小姐

Property Search No. 物業搜尋編號 208163



Exceptional duplex unit at The Peak

山頂全維港複式

4 bed, 4.5 bath, 2 car parks

Low-rise duplex unit with perfect privacy overlooks a breathtaking Victoria Harbour view
低密度複式單位，私隱度高，俯瞰氣勢磅礴維港景，可租可售

Saleable 實用 3,581 s.f.

Sale 售 \$228,000,000 / **Lease** 租 \$280,000 incl.

Inquiries 查詢 ☎ 6535 9918 Josephine Yuen 阮小姐

Property Search No. 物業搜尋編號 103366



SALE 出售

Southside & The Peak 南區及山頂



Highly sought after apartment at The Peak

山頂受歡迎單位

3 bed, 3 bath, 1 car park

Rare 3-bedroom apartment with luxurious facilities enjoys a verdant mountain view

罕有三房單位，連豪華設施，飽覽翠綠山景，可租可售

Saleable 實用 2,512 s.f.

Sale 售 \$110,000,000 / **Lease** 租 \$110,000 incl.

Inquiries 查詢 ☎ 6607 2082 Stephen Chan 陳先生

Property Search No. 物業搜尋編號 88



Can be sold via company shares transfer
可以公司轉讓股份形式買賣



Boutique apartment in Repulse Bay

淺水灣精品住宅

3 bed, 2 bath, 1 car park

Cozy 3-bedroom sea view apartment with excellent facilities in popular family estate

舒適三房海景單位，享優質設施，位處受歡迎家庭式屋苑，可租可售

Saleable 實用 1,358 s.f.

Sale 售 \$39,000,000 / **Lease** 租 \$65,000 incl.

Inquiries 查詢 ☎ 9021 1270 Annie Lee 李小姐

Property Search No. 物業搜尋編號 35298



Can be sold via company shares transfer
可以公司轉讓股份形式買賣



Elegant low-rise unit in Pokfulam

薄扶林低密度雅居

6 bed, 4 bath, over 5,000 s.f. garden, 2 car parks

Massive 6-bedroom low-rise apartment with a private huge garden and swimming pool

偌大六房低密度住宅，連私家大花園及游泳池

Saleable 實用 3,645 s.f.

Sale 售 \$148,000,000

Inquiries 查詢 ☎ 9020 1583 Michelle Chung 鍾小姐

Property Search No. 物業搜尋編號 47709



Nicely designed townhouse in Deep Water Bay

深水灣優雅裝修洋房

4 bed, 3.5 bath, private roof, 1 garage (for 3-4 cars)

Spacious 4-bedroom house with meticulous design and an unrivalled green view

深水灣寬敞四房大宅，享精美裝修及優美翠綠景色

Saleable 實用 3,200 s.f.

Sale 售 \$210,000,000

Inquiries 查詢 ☎ 9020 1583 Michelle Chung 鍾小姐

Property Search No. 物業搜尋編號 41879





Grandeur and luxury 奢華大度

Living in a prestigious location is undoubtedly a luxury. Located at Shouson Hill, this three-storey deluxe detached townhouse boasts an opulent design and offers ample space and amenities for residents to enjoy the high life.

One of the major features of this development is its spacious terrace, spanning 1,094 s.f. and providing a space

for residents to enjoy outdoor living and host gatherings. Moreover, the townhouse encompasses a fully fitted and equipped kitchen, allowing residents to host guests with greater flexibility.

When it comes to facilities and attractions nearby, the development offers easy access to Hong Kong Golf Club, Hong Kong Country Club, and the beaches of Hong Kong Island.

居於尊貴顯赫地段無疑令人稱羨。此位於壽臣山的三層高洋房，裝修極具奢華氣派、偌大空間及完善設施供住戶享受高尚生活。

洋房的主要特色，是其寬闊的平台。平台面積達1,094平方呎，可供住戶享受戶外空間及舉行聚會。另外，洋房提供設備齊全的廚房，要招待親友更為方便。

洋房附近亦有充足的設施和景點，信步可達香港高爾夫球會、香港鄉村俱樂部及沙灘。



Deluxe detached house
in Shouson Hill

壽臣山奢華洋房

4 bed, 3.5 bath,
1,094 s.f. garden, 2 car parks

Saleable 實用 2,840 s.f.

Sale 售 ~~\$220,000,000~~ \$182,000,000

Inquiries 查詢

☎ 9021 1270 Annie Lee 李小姐

Property Search No. 物業搜尋編號 179794



SALE 出售

Southside & The Peak 南區及山頂

Can be sold via company shares transfer
可以公司轉讓股份形式買賣



Luxurious house at The Peak

山頂豪華洋房大宅

5 bed, 5 bath, 279 s.f. terrace, 1,159 s.f. garden & 567 s.f. roof, 2 car parks

Prestigious 5-bedroom house with lofty ceilings, private swimming pool and private lift enjoys stunning Southside sea view

尊貴五房洋房，享高樓底、私家游泳池及私家升降機，飽覽優美南區海景

Saleable 實用 4,278 s.f.

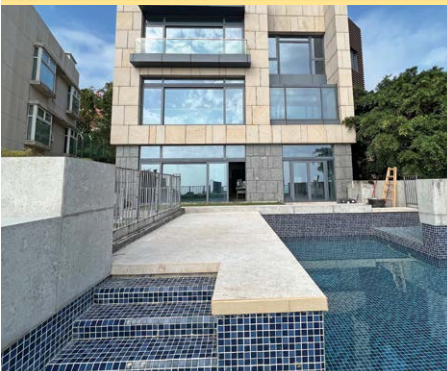
Sale 售 \$550,000,000 / **Lease 租** \$350,000 excl.

Inquiries 查詢 ☎ 6535 9918 Josephine Yuen 阮小姐

Property No. 物業編號 166459



Can be sold via company shares transfer
可以公司轉讓股份形式買賣



Luxurious single lot in Stanley

赤柱奢華獨立屋地

6 bed, 6 bath, 69 s.f. terrace, 3,958 s.f. garden & 1,155 s.f. roof, 1 garage (6 cars)

Enormous 6-ensuite single house with ample alfresco space, private lift and swimming pool enjoys spectacular sea view in tranquil location

巨型六套房獨立屋，享充足戶外空間，連私家升降機及游泳池，遠眺遼闊海景，地段清靜

Saleable 實用 5,701 s.f.

Sale 售 \$630,000,000

Inquiries 查詢 ☎ 6535 9918 Josephine Yuen 阮小姐

Property Search No. 物業搜尋編號 31084



Can be sold via company shares transfer
可以公司轉讓股份形式買賣



Unique duplex unit in Shouson Hill 壽臣山獨特複式單位

5 bed, 3.5 bath, 998 s.f. terrace & 1,033 s.f. garden, 2 car parks

One of a kind 5-bedroom duplex unit with an ample outdoor space in a peaceful location
別具一格五房複式單位，戶外空間充足，地段怡人恬靜，可租可售

Saleable 實用 2,888 s.f.

Sale 售 \$220,000,000 / **Lease** 租 \$180,000 incl.

Inquiries 查詢 ☎ 6607 2082 Stephen Chan 陳先生

Property Search No. 物業搜尋編號 39533



Can be sold via company shares transfer
可以公司轉讓股份形式買賣



Sea view house in Stanley 赤柱臨海洋房

4 bed, 1 study, 4 bath, 84 s.f. terrace, 1,356 s.f. garden & 666 s.f. roof, 2 car parks

Spacious 4-ensuite garden house with massive floor-to-ceiling windows enjoys a peaceful sea view
寬敞四套房花園洋房，連偌大落地玻璃窗，飽覽怡人海景

Saleable 實用 2,836 s.f.

Sale 售 \$218,000,000 / **Lease** 租 \$220,000 excl.

Inquiries 查詢 ☎ 6535 9918 Josephine Yuen 阮小姐

Property Search No. 物業搜尋編號 123699



SALE 出售

Southside & The Peak 南區及山頂

Can be sold via company shares transfer
可以公司轉讓股份形式買賣



Luxurious townhouse in Shouson Hill

壽臣山豪華洋房

5 bed, 4.5 bath, 603 s.f. terrace, 326 s.f. garden & 572 s.f. roof, 2 car parks

Tastefully decorated townhouse with sufficient outdoor space overlooks a magnificent

Deep Water Bay view

品味優雅裝修洋房，享充足戶外空間，俯瞰壯麗深水灣美景

Saleable 實用 3,680 s.f.

Sale 售 \$298,000,000

Inquiries 查詢 📞 9027 2100 Louis Wong 黃先生

Property Search No. 物業搜尋編號 135517



Rare penthouse duplex in Repulse Bay

淺水灣罕有頂層複式單位

3 bed, 2.5 bath, 2 car parks

Unique penthouse duplex overlooks a spectacular sea view

獨樹一幟頂層複式單位，俯瞰遼闊海景

Saleable 實用 2,107 s.f.

Sale 售 Open Offer

Inquiries 查詢 📞

9027 2100 Louis Wong 黃先生

Property Search No. 物業搜尋編號 32320





Tastefully renovated apartment on Bowen Road

寶雲道品味裝修住宅

3 bed, 2 bath, 1 car park

Modern apartment with an excellent internal upkeep overlooks magnificent city, green and partial Victoria Harbour views

當代時尚住宅，裝修簇新，俯瞰壯麗城市景、翠綠景及部分維港景

Saleable 實用 1,485 s.f.

Sale 售 \$58,000,000

Inquiries 查詢 ☎ 9020 1583 Michelle Chung 鍾小姐

Property Search No. 物業搜尋編號 192119



Rare apartment in Midlevels Central

中半山罕有住宅

3 bed, 2 bath, 1 car park

Light and airy 3-bedroom apartment with modern designs in a prestigious location

明亮通風三房單位，設計時尚，地段顯赫尊貴，可租可售

Saleable 實用 1,010 s.f.

Sale 售 \$43,000,000 / Lease 租 \$68,000 incl.

Inquiries 查詢 ☎ 6607 2082 Stephen Chan 陳先生

Property Search No. 物業搜尋編號 5161



SALE 出售

Midlevels Central & West 中半山及西半山



Stylishly decorated apartment on Bowen Road

寶雲道品味裝修住宅

3 bed, 1 bath, 1 car park

Modern 3-bedroom apartment with a high privacy enjoys a stunning city view

時尚三房單位，私隱度高，眺望壯麗城市景

Saleable 實用 1,561 s.f.

Sale 售 \$52,000,000

Inquiries 查詢 ☎ 9021 1270 Annie Lee 李小姐

Property Search No. 物業搜尋編號 84365



Spacious apartment in Midlevels Central

中半山寬敞住宅

2 bed, 2 bath, 1 car park

Rare colonial style flat with a roomy balcony in a prominent location

矜罕英式住宅，連寬闊大露台，地段高尚優越，可租可售

Saleable 實用 1,864 s.f.

Sale 售 \$45,000,000 / **Lease 租** \$75,000 incl.

Inquiries 查詢 ☎ 9021 1270 Annie Lee 李小姐

Property Search No. 物業搜尋編號 37384





Prestigious building in renowned Midlevels Central
中半山尊貴地段名廈

3 bed, 1 study, 2 bath, 1 car park

Scenic Victoria Harbour view flat in a highly sought after estate
受歡迎住宅屋苑，享優美維港景住宅，可租可售

Saleable 實用 1,522 s.f.

Sale 售 \$59,000,000 / **Lease** 租 \$80,000 incl.

Inquiries 查詢 ☎ 9021 1270 Annie Lee 李小姐

Property Search No. 物業搜尋編號 150154



High efficiency apartment on Macdonnell Road
麥當勞道高實用住宅

4 bed, 3 bath, 1 car park

High floor 4-bedroom apartment with a practical layout and excellent school network
enjoys open city and green views

高層四房單位，間隔實用，享優質校網，享開揚城市及翠綠景色

Saleable 實用 2,302 s.f.

Sale 售 \$62,000,000

Inquiries 查詢 ☎ 9021 1270 Annie Lee 李小姐

Property Search No. 物業搜尋編號 39776



SALE 出售

Midlevels Central & West 中半山及西半山

Can be sold via company shares transfer
可以公司轉讓股份形式買賣



Meticulous designed apartment in Midlevels Central

中半山精美裝修單位

3 bed, 3 bath, 1 car park

One of a kind apartment close to the Zoological and Botanical Gardens and Hong Kong Park

獨具品味裝修單位，鄰近動植物公園及香港公園

Saleable 實用 1,452 s.f.

Sale 售 \$71,000,000 (Negotiable)

Inquiries 查詢 ☎ 9021 1270 Annie Lee 李小姐

Property Search No. 物業搜尋編號 157949



Rare apartment in Midlevels Central

中半山矜罕單位

3 bed, 2.5 bath, 1 car park

Large and spacious 3-bedroom flat with clubhouse facilities in prime location

偌大寬敞三房單位，連會所設施，地段優越

Saleable 實用 2,072 s.f.

Sale 售 \$75,000,000

Inquiries 查詢 ☎ 6607 2082 Stephen Chan 陳先生

Property Search No. 物業搜尋編號 60216





Highly sought after apartment in Midlevels West

西半山受歡迎住宅

4 bed, 2 bath, 1 car park

Light and airy 4-bedroom apartment with a spacious layout in quiet location

明亮通風四房單位，間隔寬敞，地段寧靜怡人

Saleable 實用 2,499 s.f.

Sale 售 \$78,000,000 / **Lease** 租 \$108,000 incl.

Inquiries 查詢 ☎ 9020 1583 Michelle Chung 鍾小姐

Property Search No. 物業搜尋編號 40118



Practical apartment on Po Shan Road

寶珊道實用住宅

3 bed, 3 bath, 1 car park

Cozy 3-bedroom apartment with a practical layout overlooks a fantastic view of Victoria Harbour

舒適三房單位，間隔實用，俯瞰維多利亞港迷人景色，可租可售

Saleable 實用 2,499 s.f.

Sale 售 \$80,000,000 / **Lease** 租 \$120,000 incl.

Inquiries 查詢 ☎ 6607 2082 Stephen Chan 陳先生

Property Search No. 物業搜尋編號 35976



SALE 出售

Midlevels Central & West 中半山及西半山



Superb high floor unit in Midlevels Central

中半山極高層尊貴住宅

4 bed, 2 bath, 2 car parks

Luxurious high floor 4-bedroom apartment with 2 car parks overlooks a stunning view of Victoria Harbour

奢華高層四房單位，連兩車位，維港壯麗景色盡收眼底

Saleable 實用 2,429 s.f.

Sale 售 \$120,000,000 / Lease 租 \$135,000 incl.

Inquiries 查詢 ☎ 6535 9918 Josephine Yuen 阮小姐

Property Search No. 物業搜尋編號 121479



Full Victoria Harbour view apartment in Midlevels Central

中半山全維港景

5 bed, 3 bath, 1 car park

Practical 5-bedroom flat with clubhouse facilities enjoys a stunning city view close to Central

實用五房單位，連會所設施，坐擁壯麗城市景，鄰近中環

Saleable 實用 2,888 s.f.

Sale 售 \$148,000,000

Inquiries 查詢 ☎ 6535 9918 Josephine Yuen 阮小姐

Property Search No. 物業搜尋編號 6796





Prestigious apartment in Midlevels Central
 中半山尊貴單位

4 bed, 3 bath, 1 car park

Generous 4-bedroom apartment with a roomy balcony enjoys a fantastic city view
 偌大四房單位，連寬敞露台，眺望迷人城市景，可租可售

Saleable 實用 3,349 s.f.

Sale 售 \$160,000,000 / **Lease** 租 Open Offer

Inquiries 查詢 ☎ 9027 2100 Louis Wong 黃先生

Property Search No. 物業搜尋編號 36391



Grand harbour view apartment in Midlevels West
 西半山壯麗維港景住宅

4 bed, 3 bath, 1 car park

Luxurious 4-bedroom apartment with a spacious layout overlooks an amazing view of
 Victoria Harbour

豪華四房單位，間隔實用，俯瞰維港壯麗景色，可租可售

Saleable 實用 2,355 s.f.

Sale 售 \$188,000,000 / **Lease** 租 \$205,000 incl.

Inquiries 查詢 ☎ 6607 2082 Stephen Chan 陳先生

Property Search No. 物業搜尋編號 165672



SALE 出售

Midlevels East & Happy Valley 東半山及跑馬地



Cozy apartment on Blue Pool Road

藍塘道舒適住宅

3 bed, 2 bath, 1 car park

Elegant apartment with graceful interiors and high-end furniture in convenient location

高貴典雅住宅，配以頂級裝潢，交通便利，可租可售

Saleable 實用 1,873 s.f.

Sale 售 \$46,000,000 / Lease 租 \$80,000 incl.

Inquiries 查詢 ☎ 6607 2082 Stephen Chan 陳先生

Property Search No. 物業搜尋編號 39234



Superb designer duplex in North Point Midlevels

北角半山匠心獨運複式住宅

3 bed, 1 study, 2.5 bath, 178 s.f. terrace

Meticulously designed award winning duplex with a private terrace and high-end

appliances overlooks a stunning view of the city and harbour

尊貴設計獲獎複式住宅，連私家平台，設高級家電，俯瞰城市及維港優美景色

Saleable 實用 1,518 s.f.

Sale 售 \$47,500,000

Inquiries 查詢 ☎ 9021 1270 Annie Lee 李小姐

Property Search No. 物業搜尋編號 189809



獨家代理
SOLE AGENT



A fine apartment with charm and grace 精美佈局

Mid-Levels West is one of the most sought-after residential areas in Hong Kong. Located on Robinson Road, this apartment has been recently renovated and boasts an unforgettable yet meticulously designed interior.

The apartment spans 1,705 s.f. (saleable area) and boasts three bedrooms (including two ensembles), three bathrooms, a combined living and dining room, a maid's room, a utility room, and a covered car park.

This residence includes a wide range of meticulously chosen furniture and residents can enjoy a comfortable living experience while enjoying beautiful city views. Suitable for moving in immediately, this apartment is an ideal choice for homebuyers looking for a tastefully renovated residence.

Residents can easily head to the Central-Mid-Levels Escalator to reach Central and other major business areas. Schools, hospitals and grocery shopping are all in close proximity with ample public transport available to most areas in the city.

Midlevels West — Fully renovated & brand new interior
西半山全新裝修住宅

3 bed, 3 bath, 1 car park

Saleable 實用 1,705 s.f.

Sale 售 \$53,000,000

Inquiries 查詢 ☎ 9027 2100 Louis Wong 黃先生

☎ 6535 2866 Mr. Lai 黎先生

Property Search No. 物業搜尋編號 185043

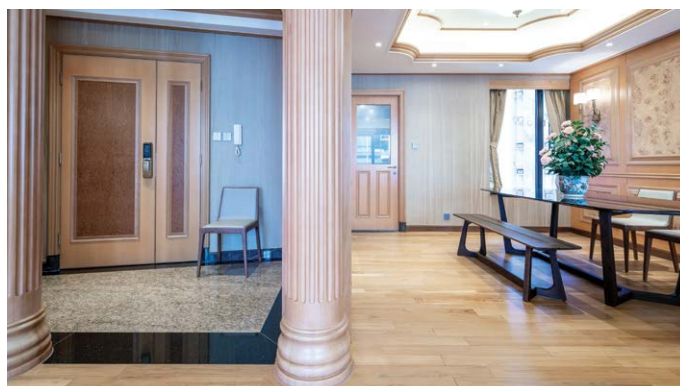


西半山是本港其中一個最受歡迎的高尚住宅區。此單位位於羅便臣道，最近經過全新裝修，呈現令人難以忘懷的雅致裝修。

單位實用面積達1,705平方呎，提供三間睡房，其中兩間為套房。另有三間浴室、相連的客飯廳、家傭房、多用途房及有蓋車位。

此單位有不少經精心挑選的家具，住戶既可以享受室內的舒適怡人，同時可欣賞繁華的都市美景，單位可即時入住，適合有意購入華麗而高尚單位的人士。

此外，住戶可使用中環至半山自動扶梯系統，前往中環及其他主要的商業中心區都十分方便。如要前往學校、醫院及購買生活所需，單位附近亦應有盡有，同時附近有公共交通前往各區。



SALE 出售

Midlevels East & Happy Valley 東半山及跑馬地



Massive apartment in Happy Valley

跑馬地偌大住宅

5 bed, 1 study, 4.5 bath, 2 car parks

Deluxe 5-bedroom apartment with a study in a tranquil yet convenient location

奢華五房住宅連書房，地段寧靜，交通便利

Saleable 實用 2,781 s.f.

Sale 售 \$130,000,000

Inquiries 查詢 ☎ 9021 1270 Annie Lee 李小姐

Property Search No. 物業搜尋編號 161140



Bright and airy apartment in Midlevels East

東半山明亮通風單位

4 bed, 3.5 bath, 2 car parks

Large 4-bedroom apartment with a balcony in tranquil area enjoys sweeping racecourse and city views

偌大四房住宅，連露台，遠眺遼闊馬場景及城市景，地段清幽，可租可售

Saleable 實用 2,776 s.f.

Sale 售 \$168,000,000 / **Lease 租** \$120,000 incl.

Inquiries 查詢 ☎ 6607 2082 Stephen Chan 陳先生

Property Search No. 物業搜尋編號 158532



General Valuations

We carry out property valuations for diversified purposes including IPO, annual audit, mergers and acquisitions, insurance, immigration, disposal, rating / stamp duty appeal and tax computations.

一般估值

我們會受託提供估值報告作公司上市、審計賬目、收購合併、保險、海外移民、資產出售、差餉或印花稅上訴及其他稅務用途。

Expert Witness and Dispute Resolution

We provide independent professional valuation advice and full narrative reports to solicitors and other clients in relation to property disputes, and can also act as an expert witness upon request.

專家證人和爭端調解

當物業價值遇上爭議時，我們向律師和客戶提供獨立專業估值建議和完整詳盡的報告，並在需要時在法庭充當專家證人。

Railway Works Disturbance Claim

Retail shop operators suffer from disturbance and business loss due to railways works. The complexity of relevant compensation ordinances is often beyond the understanding of a layman. We can help unravel the perplexity of such issues.

滋擾補償評估

零售及飲食業往往因鐵路工程受到滋擾並引致生意損失。相關補償條例複雜繁瑣，一般人不易理解。我們熟悉法定評估工作，深刻瞭解受影響行業，協助客戶拆解難題。

Development Consultancy

We have diverse and extensive experience in providing professional planning advice ranging from S.16 Planning Application, Lease Modification, Temporary Waiver etc

土地發展顧問

我們有多元化的經驗幫助客戶進行城市規劃第16條申請，更改土地契約，申請土地短期豁免書等。



Resumption Compensation

The government and URA acquire private land for public purposes. We are well-versed with resumption-related ordinances, subsequent procedure and assessment of claim. We can assist you in quantifying losses and carrying out negotiations with the Government and URA.

收地損失評估

政府及市區重建局不時根據相關條例收回私人土地作公共用途。我們熟悉該等條例，收地程序及補償評估工作，能協助客戶計算損失並代表客戶進行談判。

Compulsory Sale for Redevelopment

Under ordinance Cap.545, developers can apply to the Lands Tribunal for an order for sale of a lot when they have successfully acquired sufficient undivided shares of the lot. We can represent you to handle negotiations with developers more effectively and act as your expert witness if the case is eventually referred to the Lands Tribunal for determination.

強制售賣

根據香港法例第545章，若發展商成功收購土地上足夠的業權，便可向土地審裁處申請強制拍賣該土地。我們能代表小業主更有效地跟發展商商討收購價。若案件最終需提交土地審裁處裁決，我們亦可充當專家証人。

Inquiries : **Cliff Lau 劉先生** (MRICS)

查詢: 2152 4868
cliff.lau@landscape.com

Jack Chan 陳先生 (MHKIS, MRICS, MCIREA)

2152 4812
jack.chan@landscape.com



LODES' Elara alludes to the themes of astronomy and Greek mythology

Christmas celebrations

歡度聖誕

The Christmas season is fast approaching, and adding decorations to the home can create a festive atmosphere in an easy to handle way. Many people will put up a Christmas tree at home, but there are different ornaments to consider adding. The following beautiful and dainty decorations, as well as atmospheric light fixtures, are a must-have for decorating your home.

聖誕佳節將至，為家居添上裝飾物，既可增加節日氣氛，同時方便節日過後更換。不少人會於家中擺放聖誕樹，但為聖誕樹加上飾物，卻是各適其式。以下小巧而精美的裝飾，以及可營造氣氛的燈具，都是粉飾家居的必然之選。

The Lion Rock Press has launched a number of Hong Kong-themed ornaments. Among them, the Hong Kong Wreath is inspired by the Chinese junk sailboat that symbolises Hong Kong, and the leafy wreath can be easily integrated into a Christmas tree. In addition to the regular option, you have the choice of

adding some personal characteristics to create a truly unique accessory.

In addition, Christmas Pudding has created an ornament with a Christmas pudding in a dim sum steamer, symbolising the interplay of Eastern and Western cultures.

The Ah Lun and Victoria handmade

plush doll charms comprise two characters, one red and one blue, which allow for convenient combinations, and each has its own characteristics. Victoria's character is portrayed as a dancer, wearing a red dress and holding a red fan, and can become the focal point of any Christmas tree. As for Ah Lun, his character is

inspired by the design of a sailor of the Star Ferry, with thick hemp rope and a lifebuoy on his hands, reminiscent of the daily labour of these hard workers.

In addition to Christmas tree ornaments, there are also Christmas tree-shaped products that can be placed on dining tables or cabinets to bring the Christmas atmosphere to different parts of the home. The Ritual of Advent by Rituals is inspired by the Christmas tree, with the entire gift box containing 24 kinds of skin care products and candles. Aside from being practical, it can also add a little Christmas cheer to corners of the home unsuitable for large objects.

Decorations can elevate the festive mood of your home, and a uniquely designed lamp can complement them with a feeling of warmth and comfort. LODES' Elara alludes to the themes of astronomy and Greek mythology, and the geometric design mimics the trajectories of planets. Inspired by astral movements, the product features two metal rings, one of which can be set at different angles, creating a feeling of fluid movement. The metal ring of this fixture has a small sphere at the bottom which serves as the light emitter to illuminate a room.

The Lion Rock Press推出了多款以香港為主題的飾物，其中Hong Kong Wreath以象徵香港的中式帆船為設計靈感，加上樹葉形狀組成的花圈，方便融入於聖誕樹上。除了標準的樣式外，更可以加上個人特色，成為獨一無二的飾物。

另外，Christmas Pudding則將聖誕布甸放入點心蒸籠，象徵東西文化交匯。

至於Ah Lun及Victoria，則是手製的毛公仔吊飾。兩個角色為一紅一藍，方便以組合形式擺放，而且各有特色。Victoria的角色定位為一舞者，身穿紅裙手持紅扇，成為聖誕樹上的焦點。至於Ah Lun，則以天星小輪的水手設計服為靈感，手上有粗麻繩及水泡，令人聯想起水手的日常工作。

除了聖誕樹上的掛飾，我們更可以在餐枱或櫃上放置聖誕樹狀的設計產品，令聖誕氣氛散落至家中不同位置。Rituals的The Ritual of



Christmas Pudding symbolises the interplay of Eastern and Western cultures



Victoria (left) and Ah Lun (right) are handmade plush doll charms



The Ritual of Advent by Rituals contains 24 kinds of skin care products and candles



The leafy wreath of the Hong Kong Wreath can be easily integrated into a Christmas tree



Elara features two rings



The metal ring of Elara has a small sphere at the bottom which serves as the light emitter to illuminate a room

Advent以聖誕樹為設計靈感，整個禮盒有24款護膚品及蠟燭，實用之餘更可为家中一些難以擺放大型物件的角落，加上一點的聖誕擺設。

裝飾品可以提升家居的節日氣氛。不過，要長遠增加家居溫暖而舒適的感覺，可以由設計

獨特的燈具入手。LODES的Elara寓意天文學和希臘神話，它的幾何設計模仿宇宙中行星的軌跡。產品以星體運動為靈感，特點是有兩個金屬環，其中一個可設置在不同的角度，營造流動的感覺。此外，此燈具的金屬環燈底部有小球體，這部分可以發光，照亮室內。

★
特委代理
APPOINTED AGENT



Full Sea View Detached Residential Lot

全海景獨立住宅屋地

Perfectly positioned on the corner site of the tranquil Gold Coast area, this rare detached residential lot has a resort-like environment with excellent transport links. With an extremely limited supply, it is a not-to-be-missed opportunity to acquire a precious single lot house.

Ideal for families, this rare single lot house is situated in a large site area with a private garden. Residents can enter to the house and private garden with a separated

private direct access, offering a high degree of both privacy and tranquillity. The entire site area allows residents to re-build a brand new dream house potentially. On the other hand, this residence enjoys unobstructed sea views over the East & South Sea.

This residential lot is conveniently located, with easy access to Hong Kong International Airport, Futian Port & Lok Ma Chau and Central business district. All

the locations are about 20 minutes' drive away via NT circular road and several newly highways such as Hong Kong-Zhuhai-Macao Bridge and Ting Kau Bridge. Fabulous beaches are only a few minutes' walking distance from the residence.

This rare full sea view residential lot is perfect for families looking for a redevelopment potential surrounded by nature with extremely well serviced by public transport and road networks.



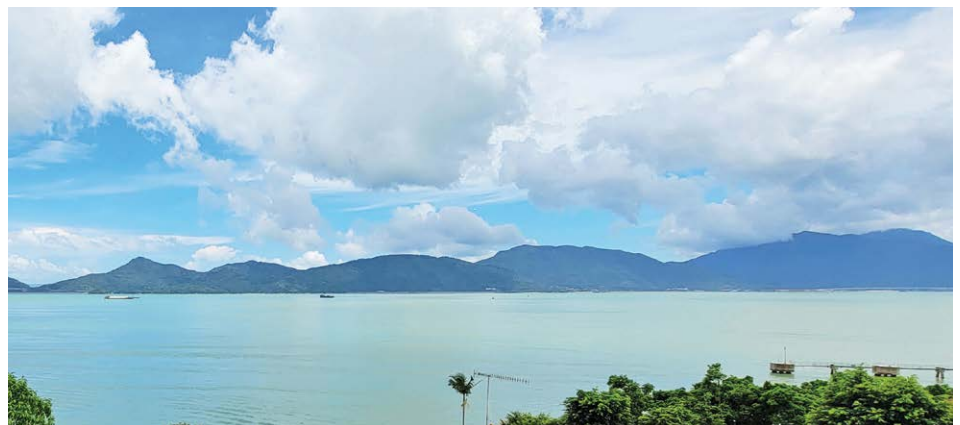
這矜罕的獨立住宅屋地坐落於寧靜黃金海岸的大單邊轉角位地段，環境如度假村般的世外桃源，但亦有完善的交通網絡連接。鑑於極稀有的供應，現正是一個難能可貴的機會購入這珍貴獨立住宅屋地。

這罕有的獨立住宅屋地包括一個大型屋地和一個巨型私家花園，住戶可分別經獨立私家路進入這住宅屋地及私家花園，享高度的隱私和寧靜。住戶可於整個住宅屋地內重新發展成夢寐以求的全新住宅，極適合大家

庭。此外，東海和南海的壯麗景色更是盡收眼底。

此住宅屋地地理位置優越，可輕鬆前往香港國際機場、福田口岸及落馬洲及中環市中心。經新界環形路和多條新高速公路，如港珠澳大橋及汀九橋，車程僅分別約20分鐘。由這住宅屋地前往優美的海灘僅約幾分鐘的步程。

這豪華的全海景住宅屋地極具重建潛力，非常適合尋求大自然舒適環境的家庭，而公共交通和道路網絡亦相當完善。



Via Company Shares – Negotiable
公司股份交易 — 可議

Extremely Rare Detached Residential Lot in Gold Coast

黃金海岸極罕有獨立住宅屋地

Site Area 地段面積 8,261 s.f.

Max. GFA 核准批准面積 8,159 s.f.

Garden Area 花園面積 4,958 s.f.

Sale

~~\$130,000,000~~ ~~\$100,000,000~~ Negotiable

Inquiries 查詢 6535 2866 Mr. Lai 黎先生

Property No. 物業編號 TM-LW- S-2211





Contemporary Style 當代風格

With magnificent greenery and sea views, this newly and modern 3,133 s.f. (saleable area) extraordinary glass detached lot house showcases the designer's taste with contemporary interior design. It offers four bedrooms (two ensuites), five bathrooms, a study room, a large entertainment area, a wine cellar, a comfortable living and dining area, a massive in-deed garden with a private swimming pool.

Floor-to-ceiling sliding windows in the living and dining room allow natural sunlight and fresh air to circulate freely. It also provides access to the huge garden, surrounded by greenery and outdoor furniture. On the other hand, the gated wall offers a high degree of privacy and only five minutes' walk to the beach from this detached lot house.

Via Company Shares – Negotiable

公司股份交易 — 可議

A Charming Single Lot House (5 mins walk to the beach)
清水灣全新魅力型格 — 獨立地段

4 beds (2 En-suites), 5 baths, 3-4 cars (In a convenient and quiet part of Clearwater Bay)

Saleable 實用 3,133 s.f.

Site Area 地段面積 9,569 s.f.

Sale 售 \$128,000,000

Inquiries 查詢 ☎ 6535 2866 Mr. Lai 黎先生

Property No. 物業編號 CWB-SS-W-2202



這簇全新獨立地段的玻璃城堡大屋實用面積廣達3,133平方呎，眺望怡人翠綠景色及寧謐海景，演繹大師建築風格及優雅簇新潮流時尚設計。大屋提供四間睡房（包括兩間套房）、五間浴室、舒適的客飯廳、書房、巨型影音及娛樂空間、私人酒窖。

寬敞的大型落地玻璃窗引入充足自然光和新鮮空氣，設相連巨型草地入契花園及獨立私人泳池。此外，周圍綠樹環抱加上獨立高牆大大提升大屋的私隱度，由大屋前往泳灘僅5分鐘路程。歡迎查詢！





Oceanfront Haven

臨海風尚

Walking into this unique Spanish style detached house, you're greeted by breathtaking ocean views and modern interior designs.

Featuring luxurious marble floors and white walls, sunlight naturally flows through generous floor-to-ceiling windows. The living and dining area is connected to a private garden terrace, from where you can enjoy fantastic sea views, gentle sea breezes and sunshine. The private garden terrace has a direct access to the sea creating an exceptionally luxurious resort lifestyle.

The house boasts excellent internal upkeep, a high-end kitchen with endless storage, and fully equipped bathrooms.



甫踏進這間別具一格的西班牙風格全獨立海濱別墅，你立即可會被寧謐的魚村海灣景色和當代時尚的室內設計所吸引。

一室豪華的大理石地板搭配白色的牆身，天然陽光從寬敞的落地窗戶流入。客飯廳與私家平台花園相連，絕色海景一覽無遺、更可享受柔和的海風和陽光。平台花園更可直接通往大海，營造出異常奢華的度假生活方式。

這別墅擁有優質裝修、大量儲物空間的高級廚房和設備齊全的浴室。



Via Company Shares – Negotiable

公司股份交易 — 可議

Rarely Detached House — Direct Waterfront

全獨立海濱別墅 — 灣畔海邊屋

4 bed (2 Ensuites), 4.5 bath, private terrace & garden direct access to the sea

Saleable 實用

2,100 s.f. + Private terrace & garden 獨立花園 連接海濱

Sale 售 \$43,800,000 Negotiable 商議

Inquiries 查詢 ☎ 6535 2866 Mr. Lai 黎先生

Property No. 物業編號 CWBTWK-2210



Serene enclave

優閒樂土

Situated in a serene location, just adjacent to Clearwater Bay Country club, this 3-storey semi-detached colonial house overlooks lovely green and sea views.

The cozy marble flooring offers a welcoming atmosphere, and a touch of elegance is added with a number of tailor-made pieces of furniture. The massive outdoor terrace is the perfect spot for mingling and gardening.

With an excellent gated security management, this idyllic residential estate also offers exclusive recreational facilities for residents including outdoor swimming pool, tennis court and huge lawn waterfront garden.



這樓高三層的半獨立式殖民地別墅位於寧靜的地泉，毗鄰清水灣鄉村俱樂部，俯瞰怡人的翠綠色和海景。

舒適的大理石地板營造出溫馨的氛圍，而獨樹一幟的家具則為別墅增添一絲優雅。巨大的戶外平台是親友歡聚和園藝的理想地點。

這世外桃源式的屋苑擁有嚴密的保安管理，而住戶更可享專屬的娛樂休閒設施，包括戶外游泳池、網球場和巨大草坪的海濱花園。

Via Company Shares – Negotiable

公司股份交易 — 可議

In a Serene Enclave — Just off CWB Country Club

優閒樂土 — 清水灣鄉村俱樂部

4 bed (2 Ensuites), 3.5 bath, 2 fixed cars, private terrace & garden

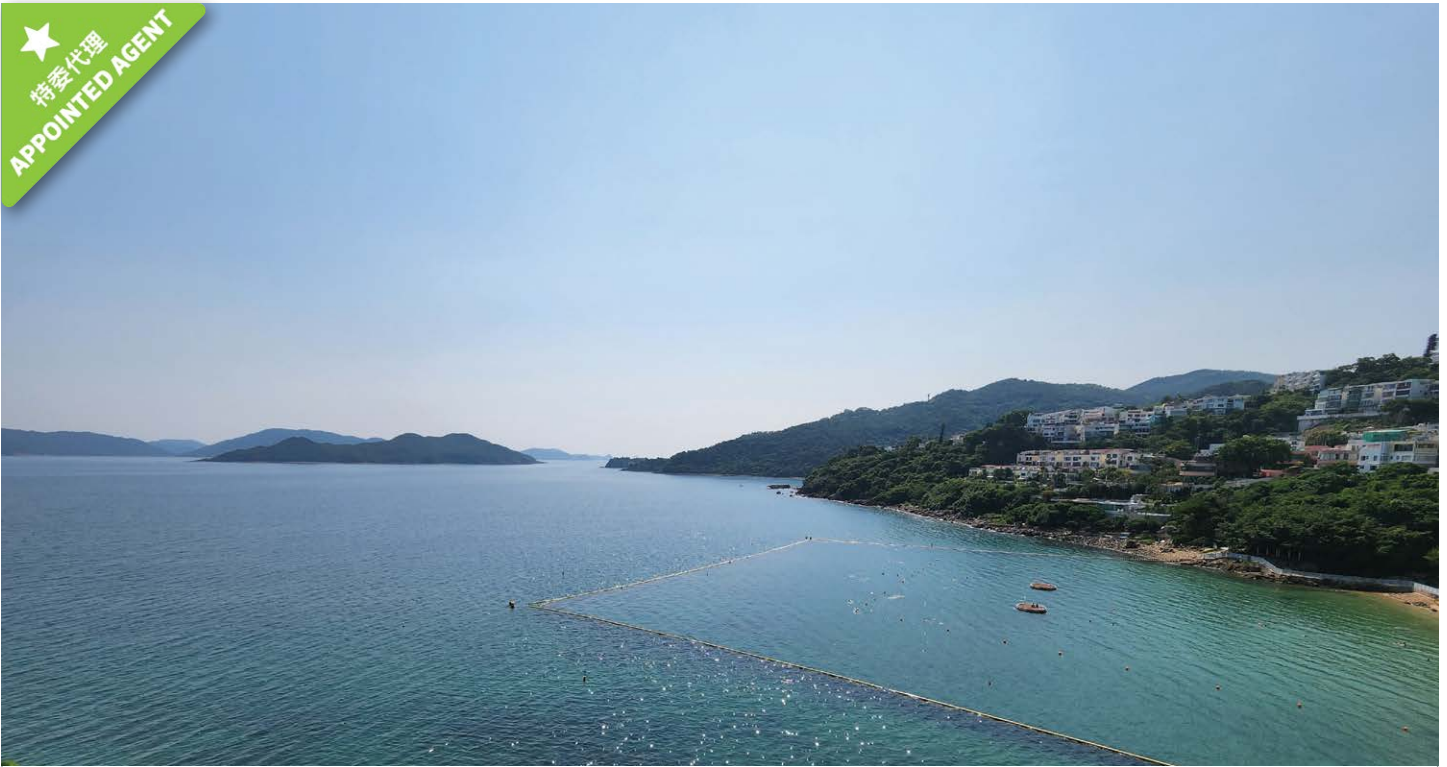
Saleable 實用 2,100 s.f.

Sale 售 \$46,000,000 \$40,000,000

Inquiries 查詢 ☎ 6535 2866 Mr. Lai 黎先生

Property No. 物業編號 CWB-CC_2207

★
特委代理
APPOINTED AGENT



Flawless Elegance

完美之選

Occupying a serene location in core Clearwater Bay area, this magnificent dream house overlooks breathtaking and expansive panoramic sea views from every floor.

With a unique colonial style, this two-story corner house includes a private access to an enormous wrap-around garden, providing a great expanding potential.

Silverstrand Beach can be reached just within a few minutes' walk from the house. Residents can enjoy swimming and sunbathing with one step closer to nature.

Via Company Shares – Negotiable

公司股份交易 — 可議

Clearwater Bay – Panoramic Full Sea View, Dream House

清水灣 — 珍罕非凡，家族收藏之選，一見難忘層層全海屋
4 beds (2 En-suites), 3 bath, private terrace & garden

Saleable 實用

2,800 s.f. (平方呎) + Private enormous garden 專屬大花園

Sale 售 ~~\$86,800,000~~ Upon Application 歡迎查詢

Inquiries 查詢 ☎ 6535 2866 Mr. Lai 黎先生

Property No. 物業編號 CWB-LW-S-2211

這寐以求的恢宏別墅位於清水灣核心區的寧靜位置，層層可享壯麗而廣闊的全海景。

這樓高兩層的全海屋具有獨特的殖民風格，設私人通道通往巨大環繞式花園，提供了巨大的擴展潛力。

從這全海屋步行幾分鐘即可抵達優美的銀線灣海灘，住戶可以暢泳和享受日光浴，親親大自然。





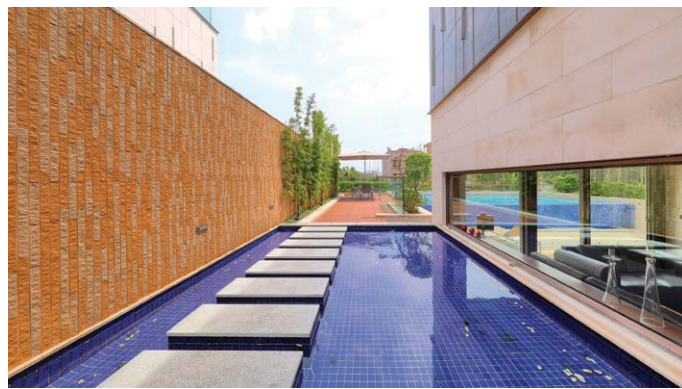
Silverstrand Private Pool — Rare Single Number Detached House

北水南山 — 銀線灣 獨立No.屋

This graceful house is a perfect example of an upscale lifestyle where residents can enjoy great privacy, greenery, tranquility, and a peaceful sea view. With a north-facing sea view and south-facing mountain view, this house encompasses an attribute that is deemed great Feng Shui in Chinese tradition.

Boasting five ensuites, the 3,666 s.f. (saleable area) house has five-and-a-half bathrooms, a combined living and dining room, a family room, a study room, a private lift connecting every storey, and a huge private garage for six cars. It also boasts lofty ceilings with excellent internal upkeep and a fully fitted and equipped kitchen.

The most striking feature of this house is its private swimming pool. Additionally, the private self-owned 4,246 s.f. enormous garden and roof serve as a haven for residents, allowing them to enjoy privacy and serenity at home.



此優美獨立街號全獨立屋，結合了私隱絕密、翠綠美景、愜意寧靜及怡人海景，展示何謂高尚的生活方式。大宅北望海景，南靠群山，一直是中國傳統以來「北水南山」的風水寶地。

全獨立大宅屋，面積達3,666平方呎，提供五間套房、五間半浴室、相連及超高樓底的客飯廳、家庭房、書房、連接各樓層的升降機及可容納六部座駕的巨大車庫。另外，大宅有優質保養，樓底極高之餘廚房亦設備齊全。

另外，大宅最令人矚目之處是其私家游泳池。大宅的巨型入契花園（4,246平方呎）及天台，提供在家享受私隱寧靜的美好時光。

Extremely Rare Single No. Detached House
極罕有私人街號獨立屋

5 bed (5 En-suites), 5.5 bath, exclusive garage for 6 cars

Saleable 實用面積 3,666 s.f. **Garden** 花園面積 4,246 s.f.

Roof Top 天台 1,187 s.f. **Garage** 車庫面積 1,861 s.f.

Sale 售 \$178,000,000 ~~\$160,000,000~~ Upon Application 歡迎查詢

Inquiries 查詢 6535 2866 Mr. Lai 黎先生

Property No. 物業編號 70543

Welcome agent's inquiries 歡迎同業查詢

獨家代理
SOLE AGENT



Supreme Luxury 至尊奢華

Tucked away on the south coast, Lantau Island is a popular destination for tourists, with its pristine beaches, deep blue sea, fresh air and resort-style vibe. Botanica Bay is a landmark residential development in Lantau Island. It only takes few minutes' walk from Cheung Sha Beach.

Spanning 3,575 s.f. (saleable area), this enormous 2-storey townhouse commands magnificent views of the sea and greenery. With a well-planned layout, this townhouse consists of four bedrooms (all ensuites), a separated living and dining room, five bathrooms, a balcony, a private huge garden, a terrace, a spacious roof, a maid's room, and a garage.

In excellent internal condition, this townhouse is well-maintained and nicely decorated, complete with floor-to-ceiling windows, lofty ceilings, and a well-equipped kitchen with a kitchen island table.

大嶼山位處香港南面海岸，是遊客的熱門旅遊勝地，坐擁優質海灘、深藍色大海、清新空氣和度假式的氛圍。大嶼山南岸是大嶼山的住宅地標，前往長沙泳灘僅數分鐘路程。

這偌大洋房實用面積3,575平方呎，樓高兩層，遠眺優美海景和翠綠景色。洋房間隔佈局井井有條，提供四間睡房（全部為套房）、獨立的客飯廳、五間浴室、露台、私家大花園、平台、寬敞的天台、傭人房和一個車庫。

洋房別墅裝修雅致，保養簇新，室內條件極佳，配有落地玻璃窗、樓底高大氣派和一個設有廚房中島的廚房。



Sumptuous townhouse in Lantau Island

大嶼山奢華洋房別墅

4 bed, 5 bath, 216 s.f. terrace,
1,369 s.f. garden & 1,524 s.f. roof, 1 garage

Saleable 實用 3,575 s.f.

Sale 售 \$75,000,000

Inquiries 查詢 ☎ 6535 2866 Mr. Lai 黎先生

☎ 9027 2100 Louis Wong 黃先生

Property Search No. 物業搜尋編號 171457





Waterfront lifestyle

海濱生活

The waterfront house is the epitome of an upscale lifestyle, and with its ample outdoor spaces, this house provides residents with the ultimate in outdoor enjoyment.

The house has two outdoor areas, including the 917 s.f. garden and the 1,453 s.f. roof. Both offer residents an

unblocked sea view and serenity, thanks to the development's location in a coastal area far from the busy city centre. Despite this, this deluxe residential development is also only a short drive to Stanley Market, where residents can enjoy the hustle and bustle of a renowned tourist site.

此臨海洋房呈現了高尚的生活典範。廣闊的戶外空間為住戶帶來頂級的戶外享受。

洋房的戶外空間充足，包括917平方呎的花園及1,453平方呎的天台。住戶可享受寧靜的環境外，無阻擋的遼闊海景更可一覽無遺。雖然位於寧靜地段，但前往赤柱市集只需短短幾分鐘車程，即抵達熙來攘往的景點。



Waterfront house in Stanley

赤柱臨海洋房

5 bed, 5 bath, 917 s.f. garden &
1,453 s.f. roof, 1 garage (2 cars)

Saleable 實用 3,384 s.f.

Lease 租 \$220,000 incl.

Inquiries 查詢

📞 9020 1583 Michelle Chung 鍾小姐

Property Search No. 物業搜尋編號 163216





Practical apartment in Pokfulam

薄扶林實用單位

4 bed, 2 bath, 1 car park

Spacious and practical 4-bedroom flat with sweeping city and harbour views

寬敞實用四房單位，遠眺遼闊城市景及維港景

Saleable 實用 1,560 s.f.

Lease 租 \$60,000 incl.

Inquiries 查詢 ☎ 9020 1583 Michelle Chung 鍾小姐

Property Search No. 物業搜尋編號 42956



Family house in Pokfulam

薄扶林家庭式洋房

5 bed, 4 bath, 1,133 s.f. garden & 456 s.f. roof, 1 car park

Highly sought after 5-bedroom house with ample alfresco space in tranquil location

受歡迎五房洋房，享充足戶外空間，地段清幽

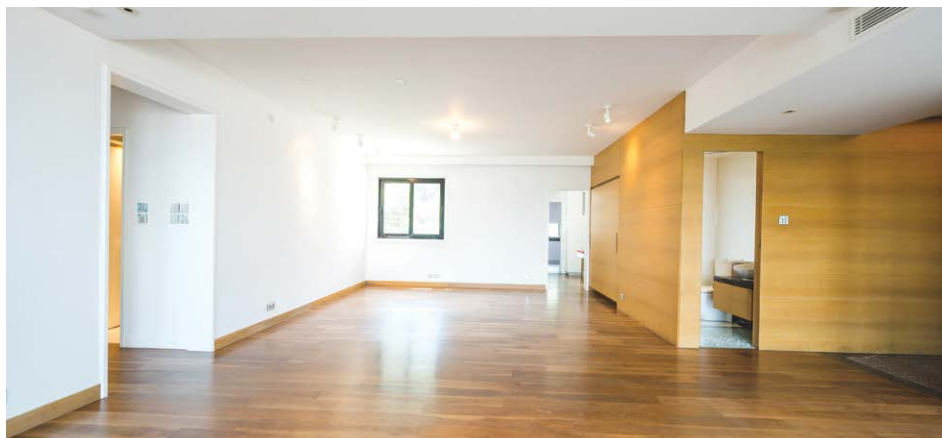
Saleable 實用 1,966 s.f.

Lease 租 ~~\$110,000 incl.~~ \$105,000 incl.

Inquiries 查詢 ☎ 9021 1270 Annie Lee 李小姐

Property Search No. 物業搜尋編號 38616





Practical apartment in Midlevels East
東半山實用單位

3 bed, 3.5 bath, 2 car parks

Large and spacious 3-bedroom apartment with peaceful green and city views in a serene location

偌大寬敞三房單位，坐擁怡人翠綠及城市美景，地段寧靜

Saleable 實用 2,344 s.f.

Lease 租 \$120,000 incl.

Inquiries 查詢 ☎ 9020 1583 Michelle Chung 鍾小姐

Property Search No. 物業搜尋編號 103009



Modern duplex in Repulse Bay

淺水灣時尚裝修複式單位

4 bed, 2.5 bath

Nicely renovated 4-bedroom duplex with a magnificent sea view in tranquil location

雅致裝修四房複式，飽覽壯麗海景，地段怡人寧靜

Saleable 實用 2,627 s.f.

Lease 租 \$130,000 incl.

Inquiries 查詢 ☎ 9021 1270 Annie Lee 李小姐

Property Search No. 物業搜尋編號 75957





A natural union

自然美學

Tucked in a tranquil neighbourhood and surrounded by a lush belt of forest, this cosy 3,876 s.f. townhouse in Repulse Bay boasts breathtaking views of the mountains and the sea.

Featuring pale hardwood floors and white walls, sunlight naturally flows through massive windows. This townhouse includes a generous living and dining room, five bedrooms, bathrooms and a fully-fitted kitchen. The terrace and garden are ideal spots for mingling or gardening, offering complete privacy.



這佈置舒適的洋房，面積達3,876平方呎，坐落於清幽怡人的淺水灣地段，四周茂綠的林蔭翠意盎然，遠眺壯麗山色和優美海景。

一室棕色硬木地板搭配奶白色牆身，偌大窗戶引入充足自然光線。洋房提供寬敞的客飯廳、五間睡房、浴室及設備齊全的廚房。此外，平台及花園是與親朋歡聚及園藝的理想地點，提供絕密私隱。

Southside seaview townhouse close to Deep Water Bay

南區海景洋房 毗鄰深水灣

5 bed, 3.5 bath, 580 s.f. terrace & 960 s.f. garden, 1 garage (2 cars)

Saleable 實用 3,876 s.f.

Lease 租 ~~\$280,000~~ incl. \$230,000 incl.

Inquiries 查詢 ☎ 9021 1270 Annie Lee 李小姐

Property Search No. 物業搜尋編號 2028





4-bedroom high floor apartment in Repulse Bay

淺水灣四房高層單位

4 bed, 3.5 bath, 1 car park

High floor zone 4-bedroom apartment with spacious layout enjoys a spectacular sea view

高層四房單位，間隔實用，遼闊海景盡收眼底

Saleable 實用 2,482 s.f.

Lease 租 \$135,000 incl.

Inquiries 查詢 ☎ 9020 1583 Michelle Chung 鍾小姐

Property Search No. 物業搜尋編號 185592



Unique penthouse unit at The Peak

山頂頂層特色戶

4 bed, 4.5 bath, 894 s.f. roof, 2 car parks

Rare 4-ensuite penthouse unit with private rooftop overlooks magnificent sea view

罕有四套房頂層單位，連私家天台，俯瞰壯麗海景

Saleable 實用 2,381 s.f.

Lease 租 \$148,000 incl.

Inquiries 查詢 ☎ 6607 2082 Stephen Chan 陳先生

Property Search No. 物業搜尋編號 20221





Huge 6-bedroom house in Shouson Hill

壽臣山巨型六房洋房

6 bed, 4.5 bath, 400 s.f, garden, 1 garage

Highly sought after 6-bedroom house with private garden ideal for large families

受歡迎六房洋房，連私家花園，適合大家庭

Saleable 實用 3,042 s.f.

Lease 租 \$195,000 incl.

Inquiries 查詢 ☎ 9020 1583 Michelle Chung 鍾小姐

Property Search No. 物業搜尋編號 113635



Waterfront residence in Pokfulam

薄扶林臨海住宅

4 bed, 3 bath, 1 car park

Full sea view 4-bedroom apartment with comprehensive clubhouse facilities

全海景四房住宅，連完善會所設施

Saleable 實用 2,667 s.f.

Lease 租 \$138,000 incl.

Inquiries 查詢 ☎ 9020 1583 Michelle Chung 鍾小姐

Property Search No. 物業搜尋編號 100660





Unique duplex unit in Repulse Bay

淺水灣獨特複式單位

4 bed, 3 bath, 911 s.f. terrace & 2,035 s.f. garden, 1 car park

Exceptional duplex apartment comes with a huge private garden and lofty ceilings in peaceful location

非凡複式住宅，連偌大私家花園，享高樓底，地段和諧寧靜

Saleable 實用 2,413 s.f.

Lease 租 \$160,000 excl.

Inquiries 查詢 ☎ 9020 1583 Michelle Chung 鍾小姐

Property Search No. 物業搜尋編號 3511



Massive house in Chung Hom Kok

舂坎角寬敞洋房

4 bed, 1 study, 4.5 bath, 2 car parks

Modern house with a spacious layout and ample open space overlooks a breathtaking sea view

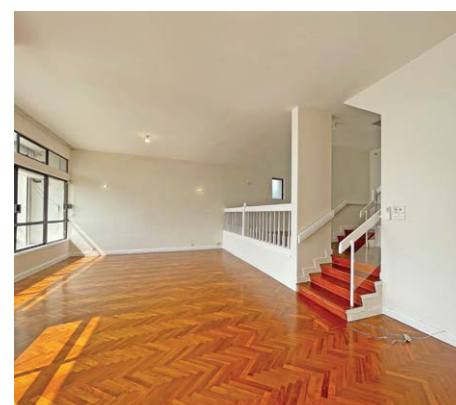
時尚品味洋房，間隔寬敞，享充足戶外空間，俯瞰怡人海景

Saleable 實用 3,379 s.f.

Lease 租 \$163,000 excl.

Inquiries 查詢 ☎ 9020 1583 Michelle Chung 鍾小姐

Property Search No. 物業搜尋編號 18330





Meticulously designed apartment in Midlevels West
西半山高雅裝修住宅

4 bed, 5 bath, 1 car park

Light and airy 4-ensuite apartment with full clubhouse facilities enjoys open city view in prominent location

明亮通風四套房住宅，享完善會所設施，眺望開揚城市景，地段優越

Saleable 實用 2,286 s.f.

Lease 租 \$170,000 incl.

Inquiries 查詢 ☎ 9027 2100 Louis Wong 黃先生

Property Search No. 物業搜尋編號 175642



Waterfront house in Repulse Bay
淺水灣臨海洋房

4 bed, 3 bath, 111 s.f. terrace, 1,149 s.f. garden & 592 s.f. roof, 2 car parks

Popular 4-bedroom garden house enjoys a spectacular sea view

受歡迎四房花園洋房，坐享遼闊海景

Saleable 實用 2,818 s.f.

Lease 租 \$220,000 incl.

Inquiries 查詢 ☎ 9021 1270 Annie Lee 李小姐

Property Search No. 物業搜尋編號 11814





Garden house at The Peak

山頂花園洋房

4 bed, 3 bath, 1 car park

Extravagant 4-bedroom house with ample outdoor space in a quiet location

奢華四房洋房，享充足戶外空間，地段清幽寧靜

Saleable 實用 2,882 s.f.

Lease 租 \$260,000 incl.

Inquiries 查詢 ☎ 9027 2100 Louis Wong 黃先生

Property Search No. 物業搜尋編號 7974



Grand garden house at The Peak

山頂豪華花園洋房

4 bed, 3.5 bath, 1,041 s.f. terrace, 2 car parks

Modern and luxurious garden townhouse enjoys a sublime view of Victoria harbour in prestigious location

時尚豪華花園洋房，維港壯麗景色一覽無遺，地段尊貴顯赫

Saleable 實用 3,097 s.f.

Lease 租 \$280,000 incl.

Inquiries 查詢 ☎ 9020 1583 Michelle Chung 鍾小姐

Property Search No. 物業搜尋編號 46183





Victoria Harbour view apartment at The Peak

山頂維港景住宅

5 bed, 3 bath, 1 car park

Superb 5-bedroom apartment overlooks a magnificent view of Victoria Harbour
奢華五房住宅，俯瞰維港優美景色

Saleable 實用 2,665 s.f.

Lease 租 \$290,000 incl.

Inquiries 查詢 ☎ 9027 2100 Louis Wong 黃先生

Property Search No. 物業搜尋編號 21589



Sea view townhouse in Repulse Bay

淺水灣海景洋房

4 bed, 4 bath, 2 car parks

Highly sought after 4-bedroom townhouse with lofty ceilings and ample alfresco space
enjoys a magnificent view of Repulse Bay Beach

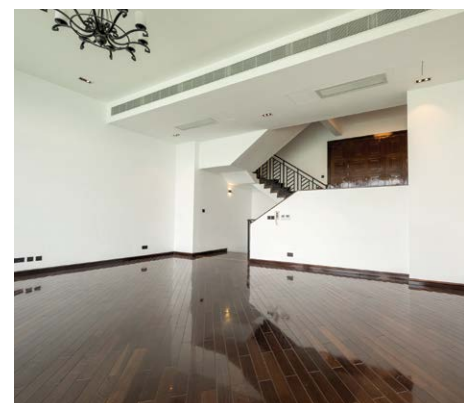
受歡迎四房洋房，享高樓底及充足戶外空間，淺水灣泳灘美景盡收眼底

Saleable 實用 3,509 s.f.

Lease 租 \$300,000 incl.

Inquiries 查詢 ☎ 9027 2100 Louis Wong 黃先生

Property Search No. 物業搜尋編號 43045



獨家代理
SOLE AGENT



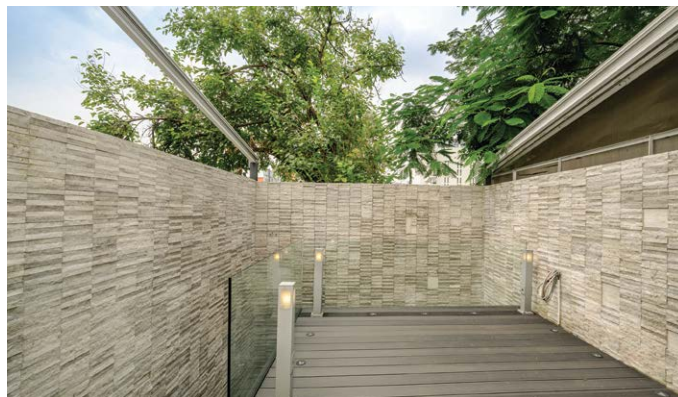
Contemporary Garden House

九龍塘 — 城中淨土
時尚亮麗型格別墅

Situated in the heart of Kowloon Tong, this contemporary three-ensuite house offers residents their own private outdoor space with open green views in a quiet location.

In addition to the ensuites, the house comprises four bathrooms, two powder room, a combined living and dining room, a maid's room, a utility room, a family room, a study room, a private garden and rooftop, and a garage for two cars. In excellent internal condition, the house is tastefully decorated with lofty ceilings.

Situated in a low density upscale residential area, this luxurious residential estate enjoys an excellent security management. Several renowned local and international schools are also nearby.



此位於九龍塘核心，擁有三間套房的洋房，為住戶於寧靜的社區提供擁有開陽及翠綠景致的專屬私人空間。

洋房亦提供四間浴室、兩個化妝間、相連的客飯廳、家傭房、多用途房、書房、私家花園及天台和可容納兩部坐駕的車庫。單位內部簇新時尚，同時有時尚亮麗的裝修，樓底高而氣派不凡。

洋房位於設有優良保安管理的高尚住宅區，知名的本地及國際學校林立。

Contemporary townhouse in Kowloon Tong
九龍塘當代時尚洋房

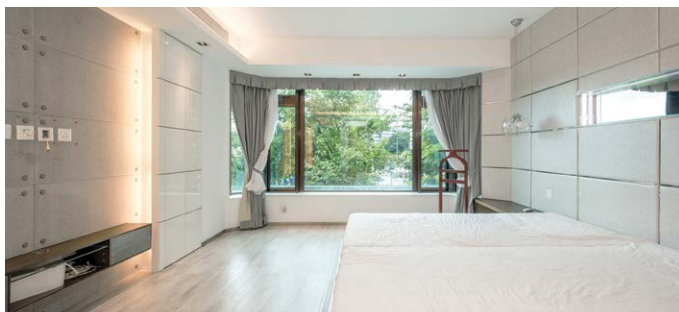
3 en-suite, 1 study, 4 bath, 2 powder room
Lovely wooden deck garden (with sizeable storage),
roof top and garage (2 cars)

Saleable 實用 2,354 s.f. (+ private garden & Yard 1,157 s.f.)

Lease 租 \$120,000 incl. \$108,000 incl.

Inquiries 查詢 ☎ 6535 2866 Mr. Lai 黎先生

Property Search No. 物業搜尋編號 208218





Light and airy house in Pokfulam

薄扶林明亮通風洋房

4 bed, 3 bath, 2 car parks

Magnificent sea view house with a huge garden and private swimming pool

壯麗海景洋房，享私家大花園及私家游泳池

Saleable 實用 4,440 s.f.

Lease 租 \$250,000 incl.

Inquiries 查詢 ☎ 9027 2100 Louis Wong 黃先生

Property Search No. 物業搜尋編號 14759



Magnificent modern house at The Peak

山頂氣派時尚洋房大宅

3 bed, 3.5 bath, 2,227 s.f. garden & 1,013 s.f. roof, 3 car parks

Enormous house with massive floor-to-ceiling windows and ample alfresco space enjoys a bird's eye view of Victoria Harbour

巨型洋房大宅，連寬闊落地大玻璃窗及充足戶外空間，鳥瞰維港美景

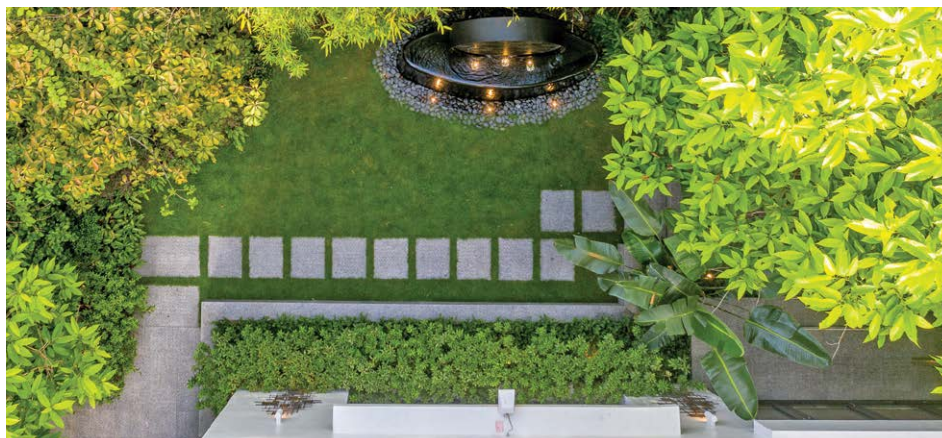
Saleable 實用 3,204 s.f.

Lease 租 \$350,000 incl.

Inquiries 查詢 ☎ 9027 2100 Louis Wong 黃先生

Property Search No. 物業搜尋編號 106650





Three-storey Luxurious House with Courtyard on Braga Circuit

布力架街華麗家居

4 ensuite bedrooms, spacious covered garage (2 vehicles)

Grandiose three-storey sizable house with generous living & dining area opening up to garden and fully equipped kitchen

尊貴三層偌大洋房，提供寬敞客廳，連私家花園，廚房設備齊全

Saleable 實用 5,906 s.f.

Lease 租 \$380,000 excl. \$355,000 excl.

Inquiries 查詢 ☎ 9027 2100 Louis Wong 黃先生

Property No. 物業編號 10002



Rare and prestigious house in Repulse Bay

淺水灣極罕有尊貴獨立洋房

5 bed, 5.5 bath, private garage (can park 4 cars)

Exceptional townhouse with modern décor and private lift overlooking stunning views of Repulse Bay, Deep Water Bay and Middle Island

尊貴洋房，裝修設計時尚，設私家升降機，俯瞰淺水灣、深水灣及巽波洲壯麗海景

Saleable 實用 4,204 s.f.

Lease 租 \$390,000 incl.

Inquiries 查詢 ☎ 9027 2100 Louis Wong 黃先生

Property Search No. 物業搜尋編號 4765





Prestigious garden house at The Peak
山頂尊貴花園洋房

4 bed, 3.5 bath, 294 s.f. terrace, 3,563 s.f. garden & 594 s.f. roof, 2 car parks

Exceptional garden house with an ample alfresco space overlooks a spectacular view of Victoria Harbour

恢宏大度花園洋房，享充足戶外空間，俯瞰維港氣勢磅礴景色

Saleable 實用 4,123 s.f.

Lease 租 \$400,000 incl.

Inquiries 查詢 ☎ 9021 1270 Annie Lee 李小姐

Property Search No. 物業搜尋編號 31373



Enormous garden house in Deep Water Bay
深水灣大花園洋房

5 bed, 5.5 bath, 154 s.f. terrace, 2,396 s.f. garden & 288 s.f. roof, 2 car parks

Superb 5-ensuite house with a private massive garden and an expansive sea view in prestigious location

奢華五套房洋房，連私家偌大花園及一望無際海景，地段顯赫

Saleable 實用 5,783 s.f.

Lease 租 \$480,000 incl.

Inquiries 查詢 ☎ 9020 1583 Michelle Chung 鍾小姐

Property Search No. 物業搜尋編號 32942





Extravagant apartment in Midlevels Central

中半山奢華住宅

5 bed, 4.5 bath, 2 car parks

Generous 5-bedroom apartment with a fantastic harbour view

偌大五房單位，眺望迷人海景

Saleable 實用 4,715 s.f.

Lease 租 \$500,000 excl.

Inquiries 查詢 ☎ 9027 2100 Louis Wong 黃先生

Property Search No. 物業搜尋編號 20870



Sumptuous detached house at The Peak

山頂豪華洋房

6 bed, 7.5 bath, 1 study, 597 s.f. terrace, 1,245 s.f. garden & 630 s.f. roof, 1 garage (4 cars)

Extraordinary 6-ensuite garden house with a private swimming pool and sufficient outdoor area enjoys a breathtaking Southside sea view

非凡六套房花園洋房，提供私家游泳池及充足戶外空間，壯麗南區海景一覽無遺

Saleable 實用 5,703 s.f.

Lease 租 \$590,000 incl.

Inquiries 查詢 ☎ 9021 1270 Annie Lee 李小姐

Property Search No. 物業搜尋編號 160078





Private pool house under the fog line at The Peak

霧線以下山頂私泳別墅

4 bed, 1 study, 4.5 bath, 272 s.f. terrace, 2,138 s.f. garden & 1,577 s.f. roof, 2 car parks

Prestigious 2-storey house with 4 bedrooms featuring brand new designer's décor, private pool, garden and terrace

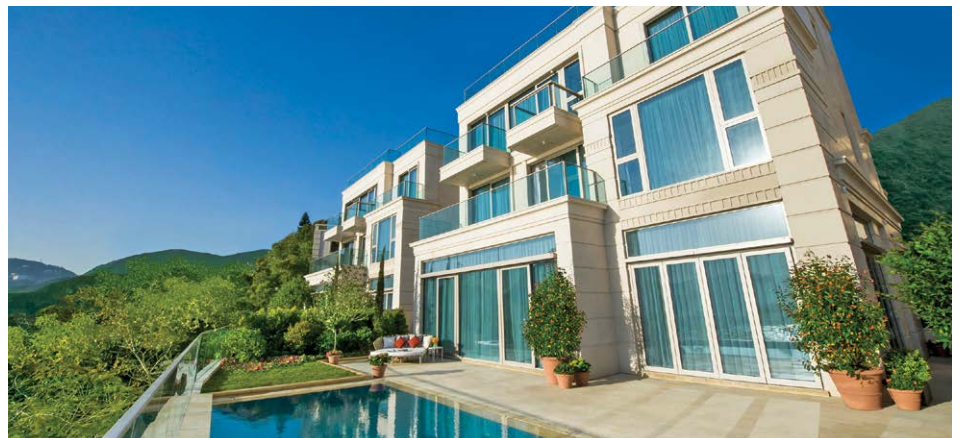
尊貴兩層高設計四房洋房，搭配全新設計師名貴裝修，連私家游泳池、花園及平台，可遇難求

Saleable 實用 4,752 s.f.

Lease 租 \$650,000 incl.

Inquiries 查詢 ☎ 6535 9918 Josephine Yuen 阮小姐

Property Search No. 物業搜尋編號 13421



Grand house in Repulse Bay

淺水灣尊貴洋房

5 bed, 6 bath, private garden, swimming pool, 1 garage (2 cars)

Sumptuous 5-ensuite house with private swimming pool overlooks expansive and stunning views of Deep Water Bay, Middle Island and Repulse Bay

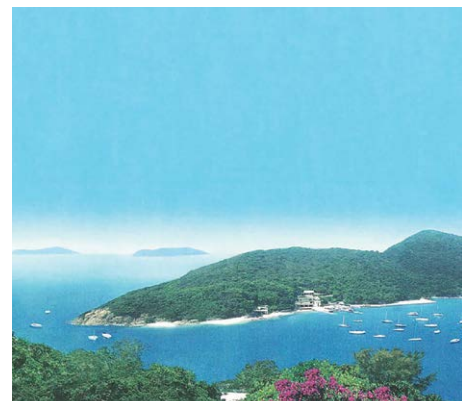
豪華五套房洋房，連私家游泳池，俯瞰遼闊深水灣、熨波洲和淺水灣壯麗景色

Saleable 實用 4,571 s.f.

Lease 租 \$780,000 incl.

Inquiries 查詢 ☎ 9027 2100 Louis Wong 黃先生

Property Search No. 物業搜尋編號 165353





Practical apartment in Midlevels Central
 中半山實用單位

3 bed, 1 study, 2.5 bath, 1 car park

Spacious and practical 3-bedroom flat with a study overlooks a magnificent city view
 寬敞實用三房單位，連書房，眺望迷人城市景

Saleable 實用 2,357 s.f.

Lease 租 \$136,000 excl.

Inquiries 查詢 ☎ 9020 1583 Michelle Chung 鍾小姐

Property Search No. 物業搜尋編號 29560



Rare garden house in Chung Hom Kok
 春坎角罕有花園洋房

3 bed, 3 bath, 1,427 s.f. garden & 618 s.f. roof, 1 garage (2 cars)

Family garden house with a sufficient outdoor space in a quiet area of Chung Hom Kok
 春坎角寧靜一隅地段，家庭式花園洋房，享充足戶外空間

Saleable 實用 2,793 s.f.

Lease 租 ~~\$140,000~~ incl. \$125,000 incl.

Inquiries 查詢 ☎ 9021 1270 Annie Lee 李小姐

Property Search No. 物業搜尋編號 50527





Newly built residential block in Tokyo 東京全新住宅大廈

- Reinforced concrete 8-storey building with total 29 residential units and 1 parking lot
- 7-min walking distance to Nishi Ojima Station on Shinjuku Line
- Gross internal area 943.54 sq m (10,156 s.f.)
- Completed in March 2022
- Freehold

- 鋼筋混凝土8層建築，合共29個單位及1個停車位
- 物業距離新宿線西大島站僅7分鐘步程
- 內部總面積943.54平方米 (10,156平方呎)
- 大廈於2022年3月竣工
- 永久業權

Guide Price JPY 984,000,000 (tax incl 連稅)
指標價 (equivalent to HK\$53,000,000)

Property No. JP1250



Newly built apartment building in Shibuya, Tokyo 東京澀谷全新住宅大廈

- Reinforced concrete 9-storey building with total 13 residential units
- Located in a convenient location, 5-min walking distance to Yoyogi Uehara Station
- Gross internal area 713.49 sq m (7,680 s.f.)
- Completed in August 2022
- Freehold

- 鋼筋混凝土9層建築，合共13個住宅單位
- 物業位於便利地段，距離澀谷區的代代木上原站僅5分鐘步程
- 內部總面積713.49平方米 (7,680平方呎)
- 大廈於2022年8月竣工
- 永久業權

Guide Price JPY 1,200,000,000 (tax incl 連稅)
指標價 (equivalent to HK\$64,800,000)

Property No. JP1570

ENQUIRIES 查詢
WhatsApp  2152 4888 KS Koh 許先生 ks.koh@landscape.com



Freehold coffee shop at busy corner

永久業權連鎖咖啡店

- Situated in a prime and prominent trading location of Shrewsbury, a busy and attractive Shropshire town
- 2 well configured shops comprising 2,444 sq ft arranged over basement and ground floor
- Let to Brown & Francis and Caffè Nero at a total passing rent of £85,000 p.a.
- Freehold



- 物業位於梳士貝利的黃金地段，是史樂郡一個繁忙而迷人的小鎮
- 2個優質的商店，面積2,444平方呎，提供地庫和地面層
- 由Brown & Francis和Caffè Nero承租，年租金收入85,000英鎊
- 永久業權

如何購買英國商業物業

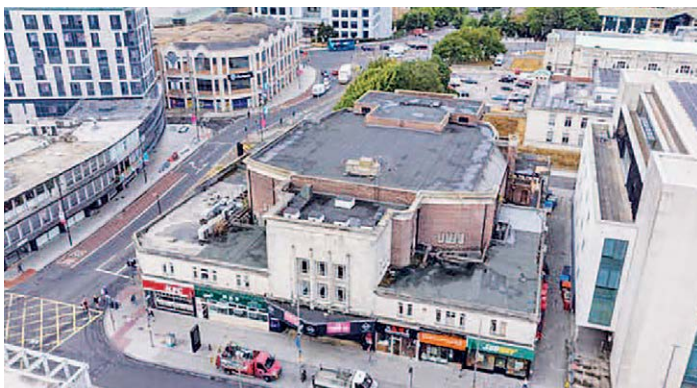
英國商業物業較住宅能提供更長，更穩定和更高的租金回報；卻可以比住宅更容易管理。但如何入手？有哪些事項要注意？英國與香港市場的分別在哪裡？由豐富實戰經驗的皇家特許測量師提供免費一對一諮詢。

Commercial properties in the UK provide opportunities for overseas investors with long, stable rental income and higher yields than residential properties; still they can be easier to manage than residential. But how to invest? What do you need to know before purchase? What are the differences between UK and HK markets? We are pleased to provide free, one-to-one consultation.

Guide Price 指標價 £1,150,000

Net Yield 淨收益率 c. 7.0%

Property No. 6024



Freehold, triple-fronted retail opportunity

永久業權三面大單邊連鎖快餐

- Rare opportunity to acquire a landmark retail-led asset in Southamton's Cultural Quarter
- Comprising 52,543 sq ft arranged over basement, ground and five upper floors
- Multi-let to tenants including KFC / Subway at a total passing rent of £376,560 p.a.
- Freehold



- 修咸頓文化區地標物業、罕有三面大單邊
- 物業面積52,543平方呎，提供地庫、地面層和五層上層
- 由連鎖快餐店如KFC / Subway等租戶承租，年租金總收入376,560英鎊
- 永久業權

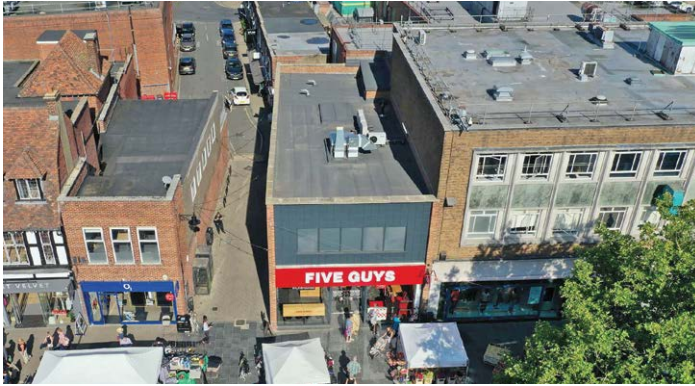
Guide Price 指標價 £3,720,000

Net Yield 淨收益率 c. 9.5%

Property No. 9150

ENQUIRIES 查詢

WhatsApp 2152 4888 KS Koh 許先生 ks.koh@landscape.com



Renowned Fast Food Chain

著名快餐連鎖店永久業權投資

- Located in a prime retail location of St Albans, an affluent Cathedral City close to London
- A purpose built, well configured shop totaling 3,301 sq ft arranged over ground and first floors
- Single-let to Five Guys until Oct 2036 at a total passing rent of £110,000 p.a.
- Freehold

- 物業位於聖奧爾本斯的黃金零售區，是一座倫敦附近的富裕大教堂城
- 精心設計的商店，面積3,301平方呎，提供地面層和一樓
- 由著名快餐集團Five Guys單一承租至2036年10月，年租金收入110,000英鎊。
- 永久業權

Guide Price £1,725,000
指標價

Net Yield c. 6.0%
淨收益率

Property No. 5517



HSBC single-let investment opportunity

匯豐銀行分行投資機會

- Situated in a prime retailing pitch of Bath, one of the UK's leading retailing destinations
- An attractive and well-configured unit comprising 8,885 sq ft arranged over ground and two upper floors
- Single-let to HSBC UK Bank plc at a total passing rent of £270,000 p.a.
- Freehold

- 物業位於英國領先零售中心之一巴斯的主要零售地段
- 配置完善的商舖單位，面積8,885平方呎，提供地面層和兩個上層
- 由匯豐銀行HSBC UK Bank plc單一承租，年租金收入270,000英鎊
- 永久業權

Guide Price £4,220,000
指標價

Net Yield c. 6.0%
淨收益率

Property No. 2661

ENQUIRIES 查詢
WhatsApp  2152 4888 KS Koh 許先生 ks.koh@landscape.com



High Yield Retail / Post Office investment opportunity 高回報零售/郵局投資機會

- Situated on the 100% prime retail pitch of Barnstaple, the main retailing centre of north Devon with a large catchment area
- Well configured floorspace totaling 8,579 sq ft arranged over ground and first floors
- Single-let to W H Smith Retail Holdings Ltd (incorporating Post Office) at a passing rent of £151,000 p.a.
- Freehold
- 物業位於巴恩斯特珀爾 100% 的優越零售地段，是北德文郡的主要零售中心，擁有廣闊的集水區
- 間隔四正的樓面空間，面積8,579平方呎，提供地面層和一樓
- 由W H Smith Retail Holdings Limited（包括郵局）單一承租，契約穩健，年租金151,000英鎊
- 永久業權

Guide Price £1,200,000
指標價

Net Yield c. 11.8%
淨收益率

Property No. 6245



Secure long let bank premises on busy high street 切斯特市中心穩健銀行長約投資

- Iconic bank asset situated on Foregate Street, Chester one of the UK's most recognised retailing destinations
- Comprising 22,580 sq ft arranged over basement, ground and three upper floors
- Single-let to Lloyds Bank PLC at a total passing rent of £375,000 p.a. with 10 years unexpired
- Freehold
- 地標銀行物業，位於英國最知名的零售目的地之一切斯特的購物大道 Foregate Street
- 面積22,580平方呎，提供地庫、地面層和三層上層
- 由萊斯銀行Lloyds Bank PLC單一承租，年租金收入375,000英鎊，租約尚餘10年
- 永久業權

Guide Price £4,380,000
指標價

Net Yield c. 8%
淨收益率

Property No. 1662

ENQUIRIES 查詢
WhatsApp 2152 4888 KS Koh 許先生 ks.koh@landscape.com



Long, M&S-secured retail investment with 63 years unexpired
穩健馬莎長約投資（尚餘63年）

- Opportunity to acquire a securely let, long and stable-income property in Portsmouth, Hampshire's major commercial port & regional retail centre
- Comprising 21,356 sq ft arranged over ground, first and second floors
- Single-let to Marks & Spencer PLC until 2086 at a passing rent of £451,850 p.a.
- 999-year leasehold
- 物業具有穩健的長期收入，位於漢普郡大城市樸茨茅夫，是主要商業港口和區域零售中心
- 面積21,356 平方呎，提供地面層、一樓和二樓
- 由馬莎上市公司單一承租至2086年（尚餘63年）
- 999年租賃權

Guide Price 指標價	£6,000,000
Net Yield 淨收益率	c. 7.0%

Property No. 2328



Prime London high street ground floor retail let to secure tenants
倫敦黃金地舖租予穩健連鎖集團

- Situated in a prime trading location on Clapham High Street, Central London
- Modern ground floor retail parade with c.90 ft frontage totaling 12,238 sq ft arranged over ground floor and basement.
- Let to Boots and Carpetright at a total passing rent of £356,000 p.a.
- 999-year leasehold
- 物業位於倫敦蘭貝斯區克萊姆高街的黃金零售地段
- 現代建築地舖有門面約90呎，總面積12,238平方呎，提供地面層和地庫
- 由Boots及Carpetright承租，年租金收入356,000英鎊
- 999年租賃權



Guide Price 指標價	£6,500,000
Net Yield 淨收益率	c. 5.1%

Property No. 6127

ENQUIRIES 查詢
WhatsApp 2152 4888 KS Koh 許先生 ks.koh@landscape.com



Prominent retail investment in Edinburgh

愛丁堡黃金鋪位

- Rare opportunity to acquire a prime retail shop on the busy Prince's Street in Edinburgh, Scotland's capital City
- Comprising 2,350 sq ft arranged over basement and ground floor
- Newly let to Claire's Accessories at a passing rent of £125,000 p.a.
- Heritable tenure (Scottish equivalent of English freehold)

- 蘇格蘭首府愛丁堡購物大街Prince's Street難得黃金地段
- 物業面積2,350平方呎，包括地面層和地庫
- 由Claire's Accessories新簽租約，年租金收入125,000英鎊
- 可繼承業權（相當於英格蘭的永久業權）

Guide Price £1,680,000
指標價

Net Yield c. 7.0%
淨收益率

Property No. 2308



Sainsbury's-anchored retail investment in London Zone 1

倫敦Zone 1區食品店錨定地舖投資

- Located in the desirable and exclusive Royal Borough of Kensington and Chelsea, renowned for its high-end boutiques, restaurants, museums and galleries
- 5 well configured, high-quality retail units totaling 21,330 sq ft at ground floor
- Multi-let to 5 tenants at a total passing rent of £445,484 p.a.
- 999-year leasehold

- 物業位於倫敦肯辛頓切爾西區的理想和獨特位置，以其高端商鋪、餐廳、博物館和畫廊而聞名
- 5個配置良好的優質零售地舖，總面積21,330平方呎
- 由5個租戶承租，年租金收入445,484英鎊
- 999年租賃權

Guide Price £710,000
指標價

Net Yield c. 5.8%
淨收益率

Property No. 4526

ENQUIRIES 查詢

WhatsApp  2152 4888 KS Koh 許先生 ks.koh@landscape.com

聯合獨家代理
JOINT EXCLUSIVE
LEASING AGENT



5-bed (4 en-suites) choice at Shiu Fai Terrace

肇輝台五房四套首選

Chantilly is located in Mid-Levels East, an exclusive and sophisticated neighbourhood only a short walking distance from Causeway Bay, and Wanchai. Close to Bowen Road fitness trail, plenty of mini-bus nearby provides the residents with efficient and convenient transportation to Causeway Bay. All apartments are in an excellent internal condition and viewing by appointment.

肇輝臺6號位於東半山傳統豪宅區，舉步可達銅鑼灣及灣仔。鄰近寶雲道健身徑，大廈附近亦有專線小巴服務直達銅鑼灣，相當方便。單位交樓標準一流，歡迎預約參觀。



Penthouse A with internal staircase to roof
頂層A單位連內置樓梯往天台

5 bed, 4 ensuite, 2,220 s.f. roof, 2 car parks

Saleable 實用 2,816 s.f.

Lease 租 \$350,000 incl.

Property No. 物業編號 136290

Unit 6A / 單位6A

5 bed, 4 ensuite, 1 car park

Saleable 實用 2,704 s.f.

Lease 租 \$135,000 incl.

Property No. 物業編號 136282

Unit 11B / 單位11B

4 bed, 4 ensuite, 1 car park

Saleable 實用 2,805 s.f.

Lease 租 \$135,000 incl.

Property No. 物業編號 136298

Inquiries 查詢 ☎ 6535 9918 Josephine Yuen 阮小姐