

select deluxe homes

The Key

大宅®

JUNE 2008
Volume 45

published and distributed by

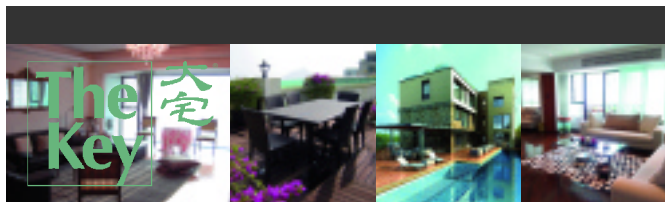
LANDSCOPE
The Specialists in Luxury Properties

領域



REPULSE BAY REPOSE

www.landscape.com



KeyNotes

"Maintain a sense of perspective and proportion in all your endeavours... Don't let problems and setbacks block out the light of reason... Whatever you are looking at is not as big a deal as you think it is."

Daniel Meacham

While world economic balance may necessitate a reverse of interest rate reduction of the US Dollar, a tighter credit environment looms large on the horizon. It is envisaged by many that an overall tight money supply situation may be just around the corner. This will have the effect of taking the steam out of the property market, which has enjoyed a bull run since 2003. The cumulative price gain over the period has exceeded 100% in the luxury sector; and in the mass sector it's over 70%. In our last Market Watch, we concluded that low interest rate, among other things, was one of the key underpinning factors for a buoyant property market. If this essential element vanishes, inflation and low supply alone may not be able to prop up the market given a gloomy economic outlook. After 30 years since late 1970's, Hong Kong's property market has matured and largely reached a level of equilibrium especially in the mass market sector. There are a bit over one million private domestic units versus similar number of households living in private sector properties. The luxury property market has however "enjoyed" a chronic demand outstripping supply situation, which may not see any appreciable change in the foreseeable future.

Koh Keng-shing
ks-koh@landscape.com

(The above is an excerpt from Market Watch on www.landscape.com. For the full article, please log on to www.landscape.com/m0608.htm)

About The Key

The Key is a monthly publication of sales and letting listings of luxury residential properties on Hong Kong Island. It is sent to VIP clients of Landscape Realty and residents of The Peak, Southside, Mid-Levels, Kowloon Tong, Homantin and selected upmarket residential areas in Shatin, Tai Po, Clear Water Bay and Castle Peak Road. The recipients comprise the crème de la crème of Hong Kong's affluent community.

In addition to The Key, Landscape Realty sends weekly eNewsletters to clients on most update listings of luxury properties. If you wish to receive the eNewsletter, please call Loretta Lui at 3102 4818 or email to info@landscape.com.

How may you list your property with The Key?

If you would like to see your property listed in The Key in the next issue, you may call Loretta Lui at 3102 4818 or email to info@landscape.com. Or you may simply fill out the space below and fax to us at 2866 0015.

Property to be listed

Asking Rental / Sale Price

Floor Area

Contact Person

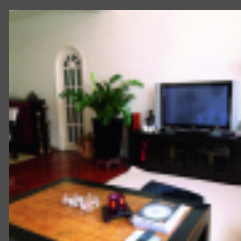
Telephone

Email

Our KeyPersons will contact you for follow-up works.

SOUTHSIDE SALES

南區
出售



Sunlight Court

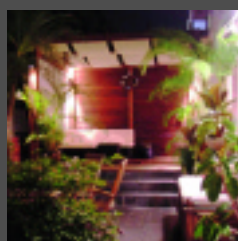
薄扶林新麗閣

30-32 Bisney Road, Pokfulam

Well decorated low-rise in tranquil area
良好裝修低密度單位，環境寧靜

950 s.f.
\$9,000,000

www.landscape.com/15123.htm | Teresa Fung 馮小姐 9138 1621



CNT Bisney

薄扶林美琳園

28 Bisney Road, Pokfulam

Tastefully decorated cosy garden flat in
tranquil location
品味裝修舒適花園住宅，環境寧靜

949 s.f. (plus 880 s.f. garden)
\$9,800,000

www.landscape.com/15402.htm | Christine Chong 莊小姐 9648 6082



Y Y Mansions

薄扶林裕仁大廈

96 Pok Fu Lam Road, Pokfulam

Cosy flat with nice decor in quiet
environment
舒適單位，品味裝修，環境寧靜

1,450 s.f.
\$10,000,000 also for lease \$45,000

www.landscape.com/15126.htm | David Chan 陳先生 9238 2012



King's Court

薄扶林景緻閣

9 Consort Rise, Pokfulam

Spacious 3-bedroom apartment at
tranquil location
寬敞三房單位，環境寧靜

1,100 s.f. (plus 1,000 s.f. garden)
\$13,000,000

Christine Chong 莊小姐 9648 6082



Repulse Bay Garden

淺水灣 麗景園

18-40 Belleview Drive, Repulse Bay

High efficiency apartment overlooking
Repulse Bay beach
實用物業眺望淺水灣海灘

1,780 s.f.
\$25,000,000 SOLE AGENT 獨家代理

www.landscape.com/12489.htm | Mary Li 李小姐 9011 6595



South Bay Towers

淺水灣南灣大廈

59 South Bay Road, Repulse Bay

Sea view high-floor boutique 2-bedroom
apartment with facilities
海景高層雅裝兩房，享有消閒設施

1,433 s.f.
\$18,000,000

www.landscape.com/14190.htm | Teresa Fung 馮小姐 9138 1621



REPULSE BAY REPOSE

This spacious seafront apartment is perched on Repulse Bay Beach, with an uninterrupted view of the fascinating sandy shoreline. The living room is meticulously decorated with the state of the art furniture and fixtures; and a seamless combination of cyber spot-lighting and contemporary crystal chandelier evokes an ambience of simple elegance. The full length walk-out terrace is the vantage point to take in the fascinating sea view while enjoying a lazy afternoon repose. Life is not complete without a generous master en suite, which contains a huge bathroom equipped with sauna room, glass shower and a Jacuzzi that looks out to the Beach. Enjoy life in a stylish way!

Repulse Bay Garden

**18-40 Belleview Drive,
Southside**

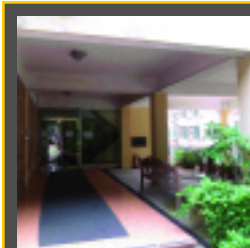
淺水灣 麗景園

2,288 s.f.

\$41,000,000

www.landscape.com/14443.htm

Teresa Fung 馮小姐 9138 1621



18-24 Bisney Road, Pokfulam

薄扶林 碧荔道18-24號

Low-rise flat with internal

access to roof terrace

低密度住宅內置樓梯直達天台

1,640 s.f.

\$20,000,000

www.landscape.com/15481.htm

Mary Li 李小姐 9011 6595



Goldson Place

壽臣山金信閣

11 Shouson Hill Road West, Shouson Hill

Low-rise garden flat with open view

低密度花園單位享開揚景觀

1,650 s.f. (plus 620 s.f. garden)

\$21,000,000

www.landscape.com/9914.htm

Mary Li 李小姐 9011 6595



La Clare Mansion

薄扶林 利嘉大廈

92 Pok Fu Lam Road, Pokfulam

Spacious 4-bedroom mid-rise

寬敞四房中密度住宅

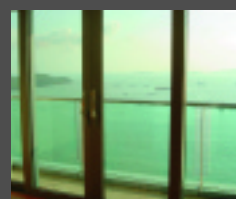
2,500 s.f.

\$22,000,000

www.landscape.com/15396.htm

Rowena Siu 蕭小姐 9348 4118

Residence Bel-Air - South Towers (Phase 2)



薄扶林貝沙灣南岸 (第二期)

38 Bel-Air Avenue, Pokfulam

Modern sea view apartment with

comprehensive facilities

時尚海景單位連全面消閒設施

1,690 s.f.

\$23,800,000 also for lease \$70,000

www.landscape.com/14727.htm

Maria Cheung 張小姐 6256 1848



43 Stanley Village Road, Stanley 赤柱 赤柱村道43號

Low-rise apartment with roof close to

Stanley beach

低密度物業連天台, 鄰近赤柱泳灘

1,454 s.f. (plus 1,123 s.f. roof)

\$18,000,000

www.landscape.com/15334.htm

Eric Wong 黃先生 9740 3396



Elite Villas

壽臣山怡禮苑

22 Shouson Hill Road, Shouson Hill

Neat and tidy low-rise flat in serene

surroundings

舒適整齊低密度住宅, 環境寧靜怡人

1,871 s.f.

\$26,500,000

www.landscape.com/7247.htm

Simon Lee 李先生 6014 3712

SOUTHSIDE SALES



Springfield Gardens

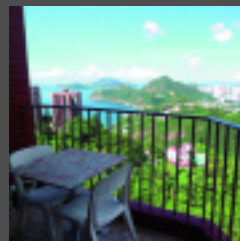
壽臣山春暉園

5-9 Shouson Hill Road West, Shouson Hill
Charming low-rise flat in serene surroundings

迷人低密度物業，環境清靜

1,775 s.f. (plus 600 s.f. terrace)
\$27,000,000

www.landscape.com/15078.htm | David Chan 陳先生 9238 2012



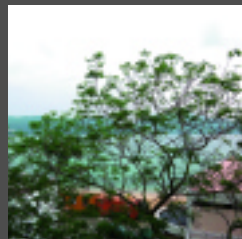
The Brentwood

淺水灣蔚峰園

11 Repulse Bay Road, Repulse Bay
Cosy sea view apartment with nice decorations on upper Repulse Bay Road
淺灣頭段舒適雅裝海景單位

1,556 s.f.
\$28,000,000

www.landscape.com/13139.htm | Rita Lee 李小姐 9437 0087



Beach Pointe

赤柱 海灣閣

16 Stanley Beach Road, Stanley

Nicely decorated low-rise at Stanley beach

雅裝低密度位處赤柱海灘旁

1,544 s.f.
\$29,000,000

www.landscape.com/15110.htm | Simon Yung 翁先生 9418 5743



Low-rise on Bisney Road

薄扶林碧麗道低密度住宅

Charming low-rise flat with big balcony in lush greenery

迷人低密度物業連大露台，環境翠綠

2,440 s.f.
\$30,000,000 also for lease \$100,000 incl.

Christine Chong 莊小姐 9648 6082



Woodgreen Estate

壽臣山壽山村道5號

5 Shouson Hill Road, Shouson Hill

Unique low-rise with large garden terrace in serene neighbourhood

獨特低密度住宅連特大平台花園，四周寧靜怡人

1,600 s.f. (plus 2,000 s.f. garden)
\$31,300,000

www.landscape.com/12744.htm | Simon Yung 翁先生 9418 5743



Hillgrove

春坎角壁如花園

18 Cape Drive, Chung Hom Kok

Practical sea view low-rise in tranquil location

實用海景低密度住宅，環境寧靜

2,200 s.f.
\$32,000,000

www.landscape.com/15321.htm | Stephen Chan 陳先生 9093 3381



Cypresswaver Villas

春坎角柏濤小築

32 Cape Road, Chung Hom Kok

Renovated sea view duplex with private roof top
翻新海景複式連私家天台

1,650 s.f. (plus 1,446 s.f. roof)
\$32,000,000

www.landscape.com/14540.htm

Stephen Chan 陳先生 9093 3381



Residence Bel-Air - South Towers (Phase 2)



薄扶林 貝沙灣-南岸(第二期)

38 Bel-Air Avenue, Pokfulam

4-bedroom waterfront apartment with comprehensive facilities

四房海濱住宅連多元化設施

2,180 s.f.
\$32,800,000 **SOLE AGENT 獨家代理**

www.landscape.com/15455.htm | Sissy Li 李小姐 9642 6969



Ruby Court

淺水灣嘉麟閣

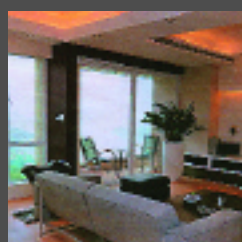
55 South Bay Road, Repulse Bay

Popular sea view flat in tranquil environment

受歡迎海景單位，環境寧靜

2,200 s.f.
\$38,000,000 also for lease \$105,000 incl.

www.landscape.com/7532.htm | Philip Lai 黎先生 9430 3330



Ridge Court

淺水灣冠園

21A-21D Repulse Bay Road, Repulse Bay

Newly decorated flat with breath-taking views

新裝單位享醉人景觀

2,300 s.f.
\$39,000,000

www.landscape.com/15012.htm | Teresa Lau 劉小姐 9080 6686



South Bay Palace

淺水灣南灣御苑

25-31 South Bay Close, Repulse Bay

Spacious 4-bedroom apartment with facilities

寬敞四房單位，享消閒設施

2,636 s.f.
\$40,000,000 also for lease \$118,000 incl.

www.landscape.com/14203.htm | Philip Lai 黎先生 9430 3330



Ruby Court

淺水灣 嘉麟閣

55 South Bay Road, Repulse Bay
Waterfront 3-bedroom apartment with facilities

臨海三房物業，享有設施

2,200 s.f.

\$42,000,000

www.landscape.com/9872.htm | Rowena Siu 蕭小姐 9348 4118



Ming Wai Garden

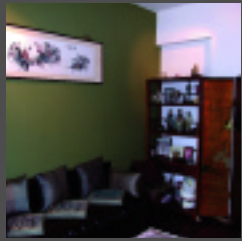
淺水灣明慧園

45 Repulse Bay Road, Repulse Bay
High floor sea view flat in exclusive development on upper Repulse Bay Road
淺灣頭段高層海景單位，位處尊貴屋苑

1,900 s.f.

\$43,000,000

www.landscape.com/14042.htm | Maria Cheung 張小姐 6256 1848



Sea Cliff Mansion

淺水灣海峰園

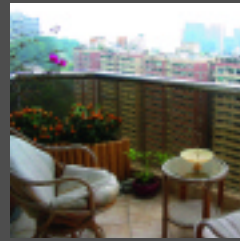
19A-19D Repulse Bay Road, Repulse Bay
Nicely decorated sea view flat on upper Repulse Bay Road

淺灣頭段雅裝海景物業

2,400 s.f.

\$44,800,000

www.landscape.com/14195.htm | Philip Lai 黎先生 9430 3330



Woodbury Court

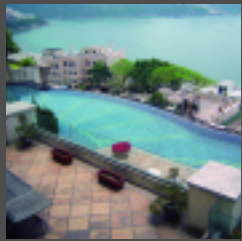
薄扶林嘉林閣

137 Pok Fu Lam Road, Pokfulam
Practical duplex with balconies and peaceful sea view
實用複式連露台，享平靜海景

2,895 s.f.

\$45,000,000

www.landscape.com/14474.htm | Mary Li 李小姐 9011 6595



Bluewater

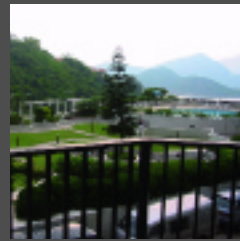
大潭 大潭道25號

25 Tai Tam Road, Tai Tam
Luxurious waterfront apartment with quality fittings and finishes
海濱豪華物業，用料配置優質

2,500 s.f.

\$48,000,000 also for lease \$130,000 incl.

www.landscape.com/15177.htm | Simon Lee 李先生 6014 3712



Grand Garden

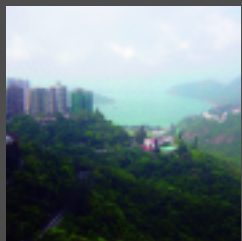
淺水灣華景園

61 South Bay Road, Repulse Bay
Spacious 4-bedroom apartment in tranquil South Bay
寬敞四房單位，位處寧靜的南灣地段

3,061 s.f.

\$49,800,000

www.landscape.com/12690.htm | Philip Lai 黎先生 9430 3330



Celestial Garden

淺水灣詩禮花園

5 Repulse Bay Road, Repulse Bay
Spacious sea view flat on upper Repulse Bay Road with facilities
淺灣頭段寬敞海景物業，享清閒設施

2,363 s.f.

\$50,000,000

www.landscape.com/14830.htm | Teresa Fung 馮小姐 9138 1621



Redhill Peninsula - Palm Drive

大潭 紅山半島-棕櫚徑
18 Pak Pat Shan Road, Tai Tam
Garden townhouse with 4 spacious bedrooms and private garage
花園排屋，設有四間寬敞睡房及私家車房

3,109 s.f. (plus 2,002 s.f. garden)

\$53,000,000

www.landscape.com/15434.htm | Simon Lee 李先生 6014 3712



Monte Verde

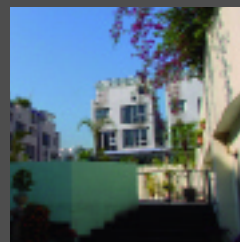
淺水灣南山別墅

41 Repulse Bay Road, Repulse Bay
4-bedroom sea view apartment with balcony
四房海景物業連露台

2,400 s.f.

\$55,000,000

www.landscape.com/14808.htm | Simon Lee 李先生 6014 3712



The Hazelton

壽臣山樓園

6 Shouson Hill Road, Shouson Hill
Garden townhouse with private garage
花園排屋連私家車房

3,195 s.f.

(plus 671 s.f. roof & 567 s.f. garden)

\$60,000,000

www.landscape.com/14510.htm | Philip Lai 黎先生 9430 3330



Regalia Bay

赤柱 富豪海灣

88 Wong Ma Kok Road, Stanley
Nicely decorated 5-bedroom waterfront garden house
雅裝五房臨海花園屋

4,053 s.f. (plus 1,000 s.f. garden)

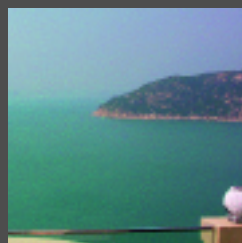
\$63,000,000 also for lease \$180,000 incl.



www.landscape.com/15498.htm

Teresa Fung 馮小姐 9138 1621

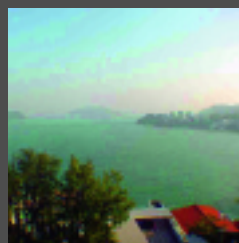
SOUTHSIDE SALES



Regalia Bay 赤柱 富豪海灣

88 Wong Ma Kok Road, Stanley
Brand new sea view house with
comprehensive club facilities
全新海景洋房享多樣化會所設施
4,056 s.f.
(plus 1,254 s.f. roof & 757 s.f. garden)
\$65,000,000

www.landscape.com/1382.htm | Eric Wong 黃先生 9740 3396



Faber Villa

大潭 輝百苑
17 Tai Tam Road, Tai Tam
4-bedroom sea view apartment with
high privacy
四房海景物業，私隱度高
3,200 s.f.
\$65,000,000 also for lease \$160,000 incl

www.landscape.com/15058.htm | Philip Lai 黎先生 9430 3330



Repulse Bay Towers

淺水灣保華大廈
119A Repulse Bay Road, Repulse Bay
Sought-after large duplex with a bird's eye
view of Repulse Bay beach
罕有難求特大複式，鳥瞰淺水灣泳灘
3,300 s.f.
\$68,000,000 also for lease \$150,000 incl.

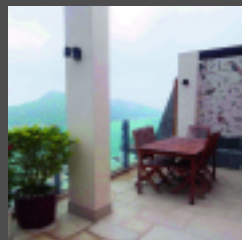
www.landscape.com/15251.htm | Sylvia Tsang 曾小姐 9801 1742



The Somerset

淺水灣怡峰
67 Repulse Bay Road, Repulse Bay
Duplex apartment overlooking Repulse
Bay and Deep Water Bay
複式單位眺望淺水灣及深水灣
3,099 s.f.
\$68,000,000

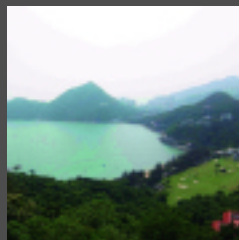
www.landscape.com/12660.htm | Simon Lee 李先生 6014 3712



Pinewaver Villas

春坎角松濤小築
35 Ching Sau Lane, Chung Hom Kok
Well designed house with breath-taking
sea view
良好設計裝修洋房，享醉人海景
3,353 s.f.
\$70,000,000

www.landscape.com/14834.htm | Stephen Chan 陳先生 9093 3381



Twin Brook

淺水灣雙溪
43 Repulse Bay Road, Repulse Bay
Spacious 4-bedroom unit with fascinating
Deep Water Bay view
寬敞四睡房單位眺望深水灣海景
2,700 s.f.
\$72,000,000

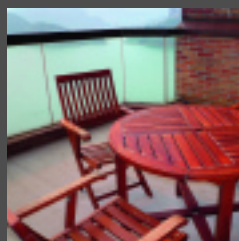
www.landscape.com/5637.htm | Sylvia Tsang 曾小姐 9801 1742



Grosvenor Place

淺水灣淺水灣道117號
117 Repulse Bay Road, Repulse Bay
4-bedroom apartment with fantastic
Repulse Bay view
四房物業享壯觀淺水灣景
2,809 s.f.
\$73,000,000 also for lease \$160,000

www.landscape.com/12672.htm | Philip Lai 黎先生 9430 3330



Duplex Unit Ruby Court

淺水灣嘉麟閣 - 複式單位
55 South Bay Road, Repulse Bay
Rare sea view duplex with internal access
to rooftop
罕有海景複式，內置樓梯直達私家天台
2,790 s.f.
\$75,000,000

Mark Mak 麥先生 6838 2929



37 Tung Tau Wan Road, Stanley 赤柱東頭灣道37號

Unique garden house at Stanley
waterfront
赤柱海濱特色花園屋
3,300 s.f. (plus 1,000 s.f. garden)
\$75,000,000

www.landscape.com/10620.htm | Johnny Cheung 張先生 9278 9939



Bellevue Place

淺水灣寶晶苑
93 Repulse Bay Road, Repulse Bay
Modern townhouse in serene environment
with Repulse Bay sea view
時尚排屋享淺水灣海景，環境清靜
3,619 s.f. (plus 865 s.f. roof)
\$88,000,000

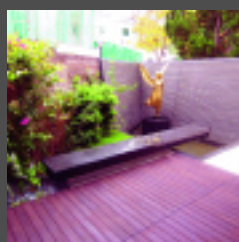
www.landscape.com/15047.htm | Philip Lai 黎先生 9430 3330



Manderly Garden

深水灣文禮苑
48 Deep Water Bay Road
Spacious 5-bedroom townhouse in
prestigious neighbourhood
寬敞五房排屋，尊貴地段
3,594 s.f.
\$88,000,000

www.landscape.com/14838.htm | Simon Lee 李先生 6014 3712



Grenbelle Garden

壽臣山嘉碧苑
25 Shouson Hill Road, Shouson Hill
Tastefully renovated garden house with
practical layout
品味翻新花園洋房，間格實用
3,500 s.f. (plus 400 s.f. garden)
\$90,000,000 also for lease \$250,000

www.landscape.com/14911.htm | Sami Woo 胡小姐 9493 8275

SOUTHSIDE SALES

南區
出售



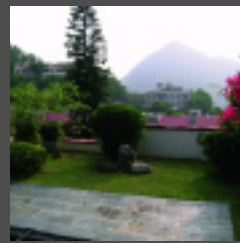
56 Repulse Bay Road

淺水灣 淺水灣道56號

Repulse Bay waterfront duplex with private terrace
淺水灣臨海複式連私家平台

3,201 s.f. (plus 383 s.f. terrace)
\$100,000,000 also for lease \$280,000 incl.

www.landscape.com/11786.htm Rita Lee 李小姐 9437 0087

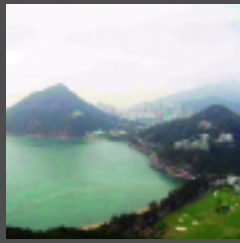


2-8 Shouson Hill Road West

壽臣山壽臣山道西2至8號
Unique 6-bedroom townhouse with large private garden in tranquil neighbourhood
獨特六房排屋連寬敞私家花園，寧靜怡人

4,000 s.f. (plus 3,000 s.f. garden)
\$150,000,000

www.landscape.com/14420.htm Maria Cheung 張小姐 6256 1848



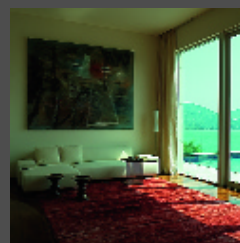
Twin Brook

淺水灣 雙溪

43 Repulse Bay Road, Repulse Bay
Exclusive huge sea view duplex with stunning sea view
特色巨型海景複式，享無敵海景

5,400 s.f.
\$150,000,000

www.landscape.com/15453.htm Simon Lee 李先生 6014 3712



12 Tai Tam Road

大潭 大潭道12號

Newly renovated garden house on Tai Tam waterfront with private pool
翻新花園屋，位處大潭海濱，設有私家泳池

5,200 s.f.
(plus 933 s.f. roof & 443 s.f. terrace)
\$155,000,000

www.landscape.com/11193.htm Louis Wong 黃先生 9871 6828



Island Grove

深水灣 香島道40號

40 Island Road, Deep Water Bay
Prestigious residence at Deep Water Bay waterfront
尊貴住宅，雄踞深水灣海旁

5,080 s.f. (plus 423 s.f. garden)
\$250,000,000

www.landscape.com/13229.htm Simon Lee 李先生 6014 3712



33 Cape Road, Chung Hom Kok

春坎角環角道33號
Brand new sea view garden house close to Stanley market
全新海景花園屋鄰近赤柱市場

3,168 s.f.
(plus 553 s.f. garden & 523 s.f. roof)
Open Offer

www.landscape.com/15215.htm Simon Yung 翁先生 9418 5743



45 Chung Hom Kok Road

春坎角道45號

Designer decorated duplex with private pool and terrace
精心設計裝修複式連私家泳池及平台

4,280 s.f. (plus 2,850 s.f. garden)
Open Offer

www.landscape.com/15471.htm

Louis Wong 黃先生 9871 6828



SOUTHSIDE LEASE

南區
出租



Hong Kong Parkview - Tower 5

淺水灣陽明山莊 - 第5座

88 Tai Tam Reservoir Road, Repulse Bay
Newly renovated 2-ensuite flat in well planned development
新裝雙套房單位，屋苑規劃良好

1,312 s.f.
\$55,000 incl.

www.landscape.com/14953.htm Simon Yung 翁先生 9418 5743



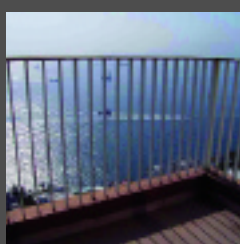
23 Repulse Bay Road

淺水灣淺水灣道23號

4-bedroom unit with fantastic sea view of Deep Water Bay
四房單位享深水灣怡人海景

1,700 s.f.
\$69,000

www.landscape.com/11323.htm Maria Cheung 張小姐 6256 1848



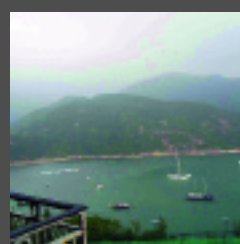
Cape Mansions

薄扶林 翠海別墅

56-62 Mount Davis Road, Pokfulam
Spacious practical flat at Pokfulam waterfront
寬敞實用住宅，位於薄扶林海濱

2,100 s.f.
\$72,000

www.landscape.com/15304.htm Sami Woo 胡小姐 9493 8275



The Redhill Peninsula

大潭 紅山半島

18 Pak Pat Shan Road, Tai Tam
Practical sea view apartment with clubhouse facilities
實用海景住宅連會所設施

2,153 s.f.
\$72,000 incl.

www.landscape.com/6971.htm Mary Li 李小姐 9011 6595

For more listings, please go to www.landscape.com/sale

For more listings, please go to www.landscape.com/lease

The Key **volume 45** 06

SOUTHSIDE LEASE



Helene Tower

淺水灣喜蓮苑

123 Repulse Bay Road, Repulse Bay
Bright duplex with bird's eye view of Repulse Bay beach
光猛複式單位鳥瞰淺水灣泳灘

1,875 s.f.

\$75,000

www.landscape.com/14926.htm

Simon Yung 翁先生 9418 5743



Woodgreen Estate

壽臣山壽山村道5號

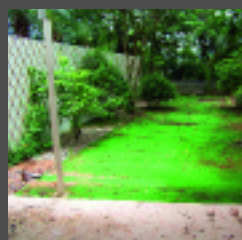
5 Shouson Hill Road, Shouson Hill
Low-rise penthouse with roof in lush green area
低密度頂層連天台，環境翠綠

2,200 s.f. (plus 2,200 s.f. roof)

\$100,000 incl. also for sale \$38,000,000

www.landscape.com/14841.htm

Johnny Cheung 張先生 9278 9939



Stanley Green

赤柱 維壁別墅

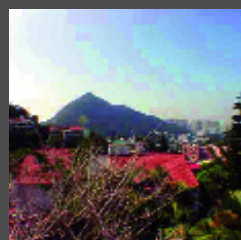
66 Stanley Village Road, Stanley
Duplex with private garden in serene location of Stanley
複式連私家花園，位於赤柱寧靜地段

2,200 s.f. (plus 500 s.f. garden)

\$108,000

www.landscape.com/14747.htm

Yvonne Chang 鄭小姐 9088 4666



Ann Garden

壽臣山安苑

29 Shouson Hill Road, Shouson Hill
Colonial lowrise with lush green view
英式低密度住宅，翠綠景致

2,500 s.f. (plus around 1,300 s.f. roof)

\$110,000

www.landscape.com/11558.htm

Teresa Fung 馮小姐 9138 1621



Burnside Estate

淺水灣濱景園

9 South Bay Road, Repulse Bay
Boutique townhouse close to Repulse Bay beach
品味洋房鄰近淺水灣海灘

2,100 s.f.

\$120,000 incl.

www.landscape.com/7070.htm

Maria Cheung 張小姐 6256 1848



Manhattan Tower

淺水灣曼赫頓大廈

63 Repulse Bay Road, Repulse Bay
Sea view apartment with new kitchen and bathrooms
海景物業，新裝廚房浴室

2,400 s.f.

\$120,000

www.landscape.com/15197.htm

Teresa Fung 馮小姐 9138 1621



6 Headland Road, Repulse Bay

淺水灣赫蘭道 6 號

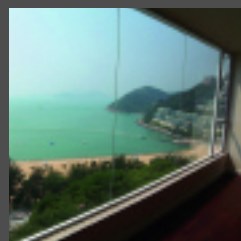
Charming penthouse duplex with peaceful ocean view
迷人頂層複式寧靜海景

2,800 s.f.

\$125,000 incl.

www.landscape.com/9384.htm

Teresa Fung 馮小姐 9138 1621



Repulse Bay Mansions

淺水灣淺水灣道113號

113 Repulse Bay Road, Repulse Bay
Large colonial low-rise flat with full view of Repulse Bay beach
寬敞英式低密度單位享淺水灣全灘景

2,600 s.f.

\$125,000 incl.

www.landscape.com/12685.htm

Teresa Fung 馮小姐 9138 1621

The Redhill Peninsula - Cedar Drive



大潭 紅山半島-松柏徑

18 Pak Pat Shan Road, Tai Tam
Spacious and practical sea view house with garden, new kitchen and bathroom
實用寬敞海景花園洋房，新廚房浴室

2,672 s.f. (plus 842 s.f. garden)

\$140,000 also for sale \$50,000,000

www.landscape.com/15271.htm

Yvonne Chang 鄭小姐 9088 4666



5 Headland Road, Repulse Bay 淺水灣 赫蘭道5 號

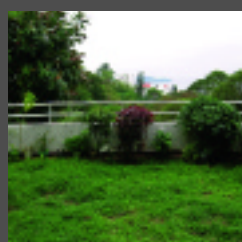
Newly renovated duplex with peaceful sea view
新裝複式享平靜海景

3,200s.f. (plus 1,000 s.f. roof)

\$149,000

www.landscape.com/14646.htm

Sylvia Tsang 曾小姐 9801 1742



Provident Villas

薄扶林富麗苑

29-31 Sassoon Road, Pokfulam
Spacious 4-bedroom townhouse with private garden
寬敞四房排屋連私家花園

3,312 s.f. (plus 1,000 s.f. garden)

\$150,000

www.landscape.com/2717.htm

Yvonne Chang 鄭小姐 9088 4666



Radcliffe

薄扶林靖林

120 Pok Fu Lam Road, Pokfulam
Rare find 4-ensuite brand new duplex with sweeping sea view
罕有四套房全新複式享遼闊海景

3,620 s.f.

\$160,000 incl.

www.landscape.com/15171.htm

Mark Mak 麥先生 6838 2929



Sea Cliff Mansions
淺水灣 海峰園
19A-19D Repulse Bay Road, Repulse Bay
Newly renovated penthouse with private roof overlooking Deep Water Bay
新裝頂層物業連私家天台，眺望深水灣
2,400 s.f.
\$160,000 incl. also for sale \$60,000,000
www.landscape.com/15134.htm | David Leung 梁先生 9199 0672



Henredon Court
壽臣山恆安閣
8 Shouson Hill Road, Shouson Hill
Newly renovated penthouse duplex in tranquil location
翻新頂層複式，環境寧靜
4,474 s.f.
\$170,000
www.landscape.com/15283.htm | Simon Yung 翁先生 9418 5743



33 Cape Road, Chung Hom Kok
春坎角環角道33號
Brand new garden townhouse close to stanley
全新花園排屋鄰近赤柱
3,147 s.f.
(plus 764 s.f. garden & 423 s.f. roof)
\$180,000
www.landscape.com/13937.htm | Stephen Chan 陳先生 9093 3381



Evergreen Garden
壽臣山松柏花園
18 Shouson Hill Road, Shouson Hill
Large duplex with sizeable garden
寬敞複式連私家花園
2,106 s.f. (plus 1,374 s.f. garden)
\$180,000 incl. also for sale \$68,000,000
www.landscape.com/11621.htm | Mary Li 李小姐 9011 6595



House on Sassoon Road
沙宣道洋房
5-bedroom townhouse with private garage
五房排屋設私家車房
3,500 s.f.
\$190,000 incl.
| Carman Szeto 司徒小姐 8100 3893



Grand Garden
淺水灣華景園
61 South Bay Road, Repulse Bay
Rare seaview penthouse with private roof terrace
罕有頂層海景單位連私家天台平台
4,333 s.f.
\$195,000
www.landscape.com/11759.htm | Simon Yung 翁先生 9418 5743



Circle Lodge
淺水灣環翠園
79 Repulse Bay Road, Repulse Bay
Rare find Repulse Bay Garden townhouse with full sea view
罕有麗景園洋房，享全海景
3,600 s.f.
\$220,000
www.landscape.com/14318.htm | Louis Wong 黃先生 9871 6828



DO YOU KNOW

Central Police Station Compound 中區警署

The oldest structure within the compound is a barrack block built in 1864. It is a three-storey building constructed adjacent to Victoria Prison. A storey was later added to the block in 1905. In 1919, Headquarters Block facing Hollywood Road was constructed. Subsequently in 1925, the two-storey Stable Block was constructed at the north-west end of the parade ground and later used as an armoury. The Police Station together with the former Central Magistracy and Victoria Prison form a group of historical architecture representing law and order in Hong Kong.

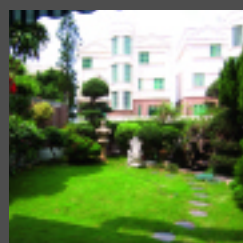
中區警署內歷史最悠久的建築物是建於一八六四年之大樓，大樓原高三層，與域多利監獄毗鄰，一九零五年加建一層。其後，警署逐漸擴建。面對荷李活道的四層高大樓則於一九一九年加建，一九二五年，在廣場的西北端又增建另一所兩層高樓房，作為軍械倉庫。它與毗鄰的前中央裁判司署及域多利監獄，組成了一組標誌著法律及紀律的歷史建築物。





Information provided by Antiquities and Monuments Office, Leisure and Cultural Services Department

SOUTHSIDE LEASE



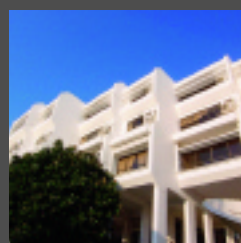
Bauhinia Gardens

春坎角紫荊園

42 Chung Hom Kok Road, Chung Hom Kok
Garden townhouse ideal for big family in lush greenery neighbourhood
花園排屋，大家庭理想居所，環境翠綠

3,500 s.f. (plus 1,000 s.f. garden)
\$185,000 incl.

www.landscape.com/14779.htm | Christine Chong 莊小姐 9648 6082



Coral Villas

春坎角珊瑚小築

27 Horizon Drive, Chung Hom Kok
Rarely available seaside townhouse
罕有放盤海濱排屋

3,345 s.f.
\$200,000

www.landscape.com/14376.htm | Louis Wong 黃先生 9871 6828



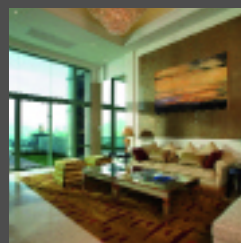
Carmelia

赤柱 赤柱村道60號

60 Stanley Village Road, Stanley
Huge colonial house with front yard and private garden
英式巨屋設有前園及私家花園

4,600 s.f. (plus 1,155 s.f. garden)
\$230,000 incl. also for sale Open Offer

www.landscape.com/9534.htm | Louis Wong 黃先生 9871 6828



Three Bays

赤柱赤柱灘道7號

7 Stanley Beach Road, Stanley
Waterfront townhouse in meticulous decors
臨海排屋，雅緻裝修

3,870 s.f. (plus 1,069 s.f. garden)
\$300,000

www.landscape.com/13534.htm | Stephen Chan 陳先生 9093 3381



56 Repulse Bay Road

淺水灣淺水灣道56號

Repulse Bay waterfront duplex with private roof terrace
淺水灣臨海複式連私家天台

4,286 s.f. (plus 1,295 s.f. roof)
\$320,000 also for sale \$160,000,000

www.landscape.com/13528.htm | Yvonne Chang 鄭小姐 9088 4666



Residence Bel-Air House (Phase 3)

薄扶林 貝沙灣洋房

8 Cyberport Road, Pokfulam
Brand new spacious waterfront garden house
全新寬敞臨海花園屋

4,645 s.f.
(plus 1,977 s.f. garden & 1,503 roof)
Open Offer also for sale \$120,000,000

www.landscape.com/14348.htm | Mira To 杜小姐 9486 1566

MID-LEVELS SALES



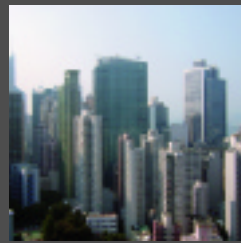
Silver Fair Mansion

東半山銀輝大廈

2E-2F Shiu Fai Terrace, Midlevels East
Bright and airy apartment on Shiu Fai Terrace
光猛通爽住宅，位於筆輝台

1,450 s.f.
\$11,000,000

www.landscape.com/14732.htm | David Leung 梁先生 9199 0672



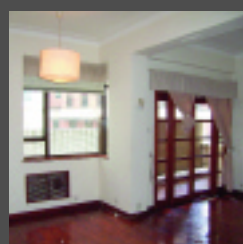
Camelot Height

中半山金鑾閣

66 Kennedy Road, Midlevels Central
3-bedroom flat on Kennedy Road with open city view
堅尼地道三房享開揚都會景

1,260 s.f.
\$11,880,000 also for lease \$48,000 incl.

www.landscape.com/14406.htm | Rita Lee 李小姐 9437 0087



South Mansion

中半山南方閣

5A-5B MacDonnell Road, Midlevels Central
Low-rise apartment on MacDonnell Road
麥當勞道低密度住宅

1,500 s.f.
\$12,000,000 also for lease \$45,000 incl.

www.landscape.com/15290.htm | Sissy Li 李小姐 9642 6969



Fujiya Mansion

中半山富士屋

21-23A Kennedy Road, Midlevels Central
Conveniently located older style flat with practical layout
舊香港風格實用物業，位置方便

1,600 s.f.
\$13,500,000

www.landscape.com/13981.htm | Eric Wong 黃先生 9740 3396



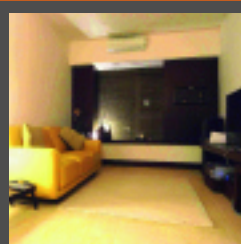
1-1A Sing Woo Crescent, Happy Valley

跑馬地成和坊1-1A號

Charming low-rise with nice decor
迷人低密度住宅，雅緻裝修

1,500 s.f.
\$13,800,000

www.landscape.com/15212.htm | Christine Chong 莊小姐 9648 6082



Hillsborough Court

中半山曉峰閣

18 Old Peak Road, Midlevels Central
Luxurious boutique apartment on fringe of Central
豪華裝修物業，鄰近中環

976 s.f.
\$15,000,000

www.landscape.com/14226.htm | Johnny Cheung 張先生 9278 9939



Green Lane Court
跑馬地 箕璫閣
130-140 Blue Pool Road, Happy Valley
Designer decorated mid-rise flat with balcony
品味設計裝修中密度單位，設有露台
1,400 s.f.
\$16,000,000

www.landscape.com/14601.htm | Sami Woo 胡小姐 9493 8275



Hong Lok Mansions
中半山康樂大廈
44-44F MacDonnell Road, Midlevels Central
4-bedroom mid-rise close to escalator in Midlevels
1,600 s.f.
\$16,280,000 also for lease \$58,000 incl.

www.landscape.com/13659.htm | Eric Wong 黃先生 9740 3396



Estella Court
中半山 香海大廈
70 MacDonnell Road, Midlevels Central
Nicely decorated 3-bedroom flat on the fringe of Central
雅裝三房，鄰近中環
1,800 s.f.
\$17,000,000

www.landscape.com/15287.htm | Mary Li 李小姐 9011 6595



Amber Garden
中半山柏苑
70-72 Kennedy Road, Midlevels Central
Conveniently located 3-bedroom flat with practical layout
實用三房，位置方便
1,732 s.f.
\$17,500,000

www.landscape.com/12490.htm | David Chan 陳先生 9238 2012



Pak Fai Mansion
中半山 百輝大廈
72 Macdonnell Road, Midlevels Central
Low-rise with terrace
低密度物業連平台
1,700 s.f. (plus 100 s.f. terrace)
\$18,000,000

www.landscape.com/14626.htm | Mary Li 李小姐 9011 6595



Shuk Yuen Building
跑馬地菽園新臺
2 Green Lane, Happy Valley
Renovated low-rise apartment in quiet corner of Happy Valley
翻新低密度單位，位處跑馬地寧靜地段
1,900 s.f.
\$19,000,000

www.landscape.com/12791.htm | Mark Mak 麥先生 6838 2929



Wing On Lodge
跑馬地 永安新村
72-82 Blue Pool Road, Happy Valley
Nicely decorated penthouse with roof
雅裝頂層連天台
1,308 s.f. (plus 1,308 s.f. roof)
\$19,800,000

www.landscape.com/14604.htm | Sylvia Tsang 曾小姐 9801 1742



Se Wan Mansion
跑馬地西園樓
43A-G Happy View Terrace, Happy Valley
Low-rise flat with private roof and brand new decorations
低密度單位連私家天台，全新裝修
1,650 s.f. (plus 1,000 s.f. roof)
\$20,000,000

www.landscape.com/14950.htm | Sylvia Tsang 曾小姐 9801 1742



Lowrise at Jardine's Lookout
渣甸山低密度住宅
Charming colonial low-rise in Jardine's Lookout
渣甸山迷人英式低密度
1,800 s.f.
\$21,000,000

www.landscape.com/15026.htm | Carman Szeto 司徒小姐 8100 3893



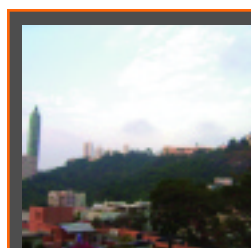
United Mansion
東半山騰黃閣
7 Shiu Fai Terrace, Midlevels East
Unique mid-rise apartment with 3 ensuite in quiet neighbourhood
獨特中密度單位連三套房，環境寧靜
2,200 s.f.
\$21,000,000 also for lease \$65,000 incl.

www.landscape.com/15026.htm | Mira To 杜小姐 9486 1566



Man Yuen Garden
中半山 文苑花園
52-52B Kennedy Road, Midlevels Central
Mid-rise apartment with big balcony on Kennedy Road
中密度單位連大露台，位處堅尼地道
2,000 s.f.
\$22,000,000

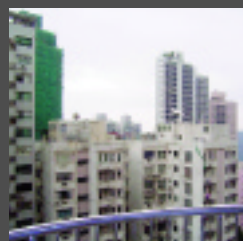
www.landscape.com/15389.htm | Sissy Li 李小姐 9642 6969



Sanitarian Apartments
跑馬地潔園
20-30 Green Lane, Happy Valley
Unique colonial low-rise flat in tranquil location
獨特英式低密度單位，環境寧靜
2,000 s.f.
\$22,500,000

www.landscape.com/4748.htm | Sami Woo 胡小姐 9493 8275

MID-LEVELS SALES



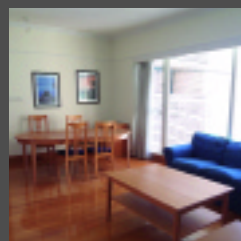
Pearl Gardens

西半山明珠臺

7 Conduit Road, Midlevels West
High efficiency flat in convenient location
實用率高單位，位置方便

2,200 s.f.
\$23,800,000

www.landscape.com/15246.htm Carman Szeto 司徒小姐 8100 3893



Valverde

中半山蔚皇居

11 May Road, Midlevels Central
Boutique apartment in tranquil location of
Midlevels Central
品味物業位處中半山寧靜地段

1,373 s.f.
\$23,800,000

www.landscape.com/12411.htm Eric Wong 黃先生 9740 3396



Tregunter Tower 3

中半山地利根德閣3座

14 Tregunter Path, Midlevels Central
Good value high floor apartment with full
clubhouse facilities in prime location
良好價值高層單位，全面會所設施，位置優越

2,020 s.f.
\$25,000,000

www.landscape.com/14316.htm Teresa Lau 劉小姐 9080 6686



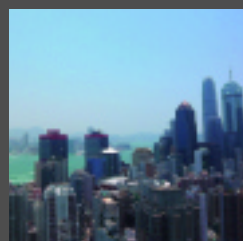
Conway Mansion

西半山康威園

29 Conduit Road, Midlevels West
Practical 4-bedroom flat with sizeable
terrace garden
實用四房享寬敞平台花園

1,800 s.f.
\$26,800,000

www.landscape.com/15060.htm Simon Lee 李先生 6014 3712



Centre Place

西半山匯賢居

1 High Street, Midlevels West
Brand new 3-bedroom harbour view
apartment close to Central
全新三房維港景單位，鄰近中環

1,609 s.f.
\$27,500,000 also for lease \$85,000 incl.

www.landscape.com/15317.htm Mark Mak 麥先生 6838 2929



2-6A Wilson Road, Jardine's Lookout

渣甸山衛信道2-6A 號

Low-rise apartment with private roof top
低密度物業連私家天台

1,800 s.f. (plus 1,600 s.f. roof)
\$27,800,000

www.landscape.com/15040.htm Christine Chong 莊小姐 9648 6082



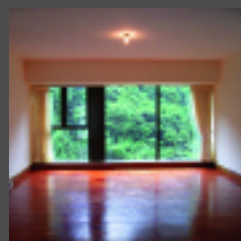
The Legend

東半山名門

23 Tai Hang Drive, Midlevels East
Brand new apartment with
excellent facilities
全新物業享一流設施

1,908 s.f.
\$28,000,000 also for lease \$80,000 incl.

www.landscape.com/12097.htm Simon Yung 翁先生 9418 5743



Tavistock 2

中半山騰皇居2座

10A Tregunter Path, Midlevels Central
Deluxe flat in lower peak with
comprehensive clubhouse facilities
下山頂段複式住宅，享多樣化會所設施

1,730 s.f.
\$29,000,000

www.landscape.com/14815.htm Eric Wong 黃先生 9740 3396



Birchwood Place

中半山寶樺臺

96 MacDonnell Road, Midlevels Central
Popular flat on MacDonnell Road with
excellent facilities
麥當勞道受歡迎單位，一流設施

2,018 s.f.
\$30,000,000

www.landscape.com/14941.htm Simon Lee 李先生 6014 3712



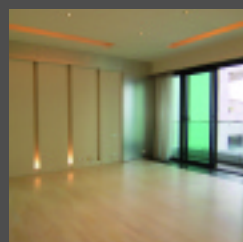
Park Mansions

中半山百年順大廈

27-29 MacDonnell Road, Midlevels Central
Nicely decorated 3-bedroom apartment
on fringe of central
雅裝三房，鄰近中環

2,013 s.f.
\$30,000,000

www.landscape.com/14283.htm Eric Wong 黃先生 9740 3396



11 MacDonnell Road, Midlevels Central

中半山麥當勞道 11 號

Nicely decorated high privacy modern
apartment
雅裝高私隱度時尚住宅

2,313 s.f.
\$31,000,000

www.landscape.com/14367.htm David Chan 陳先生 9238 2012



The Elegance

東半山優雅閣

60 Tai Hang Road, Midlevels East
Rare duplex with city and partial
harbour views
罕有複式住宅享城市景及部份維港景觀

2,404 s.f.
\$31,000,000 also for lease 90,000 incl.

www.landscape.com/14120.htm Simon Yung 翁先生 9418 5743



Fontana Garden - Block C 東半山 豪園C座
1-25 Ka Ning Path, Midlevels East
Huge apartment with brand new decorations in convenient location
巨型單位，全新裝修，位置方便
3,300 s.f.
\$31,500,000 also for lease 120,000 incl.

www.landscape.com/14464.htm | Stephen Chan 陳先生 9093 3381



Bowen Place
中半山寶雲閣
11A Bowen Road, Midlevels Central
Prestigious location with harbour and city views
尊貴地段，維港景及城市景觀
1,983 s.f.
\$31,800,000 also for lease 80,000 incl.

www.landscape.com/14464.htm | Teresa Lau 劉小姐 9080 6686



Wilshire Park
中半山豪輝閣
12-14 MacDonnell Road, Midlevels Central
Rare on market high privacy 4-bedroom flat
罕有放盤高私隱度四房
2,265 s.f.
\$31,800,000

www.landscape.com/13899.htm | Mira To 杜小姐 9486 1566



Wealthy Heights
中半山威豪閣
35 MacDonnell Road, Midlevels Central
Spacious two-bedroom flat with huge private terrace garden
寬敞兩房單位連特大私家平台花園
1,561 s.f. (plus 3,880 s.f. terrace)
\$32,799,999

www.landscape.com/15046.htm | Philip Lai 黎先生 9430 3330



Jardine's Lookout Garden Mansions
東半山渣甸山花園大廈
148-150 Tai Hang Road, Midlevels East
Spacious residence at tranquil location
寬敞物業，寧靜地段
2,600 s.f.
\$33,000,000

www.landscape.com/15161.htm | Mark Mak 麥先生 6838 2929



Valley View 東半山欣景台
4A-4D Wong Nai Chung Gap Road, Midlevels East
Spacious colonial-style 4-bedroom flat with balcony in tranquil location
寬敞四房英式風格物業連露台，位置寧靜
2,400 s.f.
\$36,000,000

www.landscape.com/15161.htm | Mary Li 李小姐 9011 6595



Dragon View
中半山龍景樓
39 MacDonnell Road, Midlevels Central
High efficiency older style apartment in convenient location
實用舊式住宅，位置方便
2,500 s.f.
\$37,000,000

www.landscape.com/15288.htm | Sylvia Tsang 曾小姐 9801 1742



Po Shan Mansions
西半山寶城大廈
10-16 Po Shan Road, Midlevels West
Huge 4-bedroom apartment in quiet enclave
四房大單位，位處寧靜一隅
2,800 s.f.
\$38,000,000

www.landscape.com/14648.htm | Carman Szeto 司徒小姐 8100 3893



MacDonnell House
中半山麥當奴大廈
6-8 MacDonnell Road, Midlevels Central
Tastefully decorated unique penthouse with private roof terrace
品味裝修特色頂層單位，設有私家天台平台
1,543 s.f. (plus 963 s.f. terrace)
\$38,000,000

www.landscape.com/15107.htm | Mira To 杜小姐 9486 1566



Tavistock 2
中半山騰皇居2座
10A Tregunter Path, Midlevels Central
Deluxe flat with comprehensive clubhouse facilities in prime location
豪華住宅享多樣化會所設施，黃金地段
2,030 s.f.
\$38,000,000

www.landscape.com/11943.htm | David Chan 陳先生 9238 2012



Visalia Garden
中半山蔚山花園
48 MacDonnell Road, Midlevels Central
Newly renovated high floor 4-bedroom flat at convenient location
新裝高層四房單位，位置方便
2,195 s.f.
\$40,000,000 also for lease \$90,000 incl.

www.landscape.com/7960.htm | Rita Lee 李小姐 9437 0087



1 Po Shan Road, Midlevels West
西半山寶珊道1號
Deluxe 4-bedroom apartment with stunning harbour view
豪華四房單位享醉人維港景
2,468 s.f.
\$42,000,000

www.landscape.com/7960.htm | Sissy Li 李小姐 9642 6969

MID-LEVELS SALES



Hatton House

西半山赫德大廈

15 Kotewall Road, Midlevels West
5-bedroom apartment with harbour view in tranquil location
五房維港景住宅，環境寧靜

2,800 s.f.
\$42,000,000

www.landscape.com/10285.htm | Mira To 杜小姐 9486 1566



Kennedy Apartment

中半山堅尼地大廈

34A Kennedy Road, Midlevels Central
Unique mid-rise overlooking the Hong Kong Park
獨特中密度單位眺望香港公園

2,500 s.f.
\$42,000,000

www.landscape.com/13748.htm | Mira To 杜小姐 9486 1566



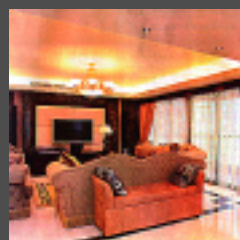
Cavendish Heights

渣甸山嘉雲臺

27-37 Perkins Road, Jardine's Lookout
Penthouse flat with roof enjoying splendid harbour view
頂層單位連天台享醉人維港景

1,907 s.f. (plus 1,659 s.f. roof)
\$43,000,000

www.landscape.com/15179.htm | Christine Chong 莊小姐 9648 6082



Estoril Court

中半山愛都大廈

55 Garden Road, Midlevels Central
Nicely decorated apartment with very high efficiency on fringe of central
雅裝住宅，實用率特高，鄰近中環

3,347 s.f.
\$43,000,000

www.landscape.com/12919.htm | David Chan 陳先生 9238 2012



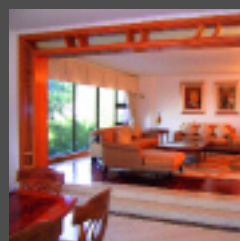
Garden Terrace 2 & 3

中半山花園臺2 & 3座

8A Old Peak Road, Midlevels Central
4-ensuite bedroom flat in Midlevels with easy access to central district
半山四套房住宅，鄰近中環

3,319 s.f.
\$43,000,000

www.landscape.com/14416.htm | Maria Cheung 張小姐 6256 1848



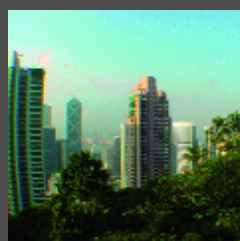
Leon Court 東半山利安閣

12-14 Wong Nai Chung Gap Road, Midlevels East

Good value apartment in a quiet enclave with open city view
良好價值住宅享開揚城市景，位處寧靜一隅

2,800 s.f.
\$45,000,000 also for lease \$120,000 incl.

Teresa Lau 劉小姐 9080 6686



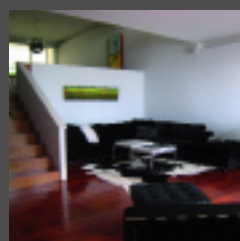
Rose Gardens

中半山玫瑰別墅

9 Magazine Gap Road, Midlevels Central
Rare find colonial apartment at prime location
罕有英式單位，黃金地段

2,600 s.f.
\$46,000,000

www.landscape.com/14200.htm | Sissy Li 李小姐 9642 6969



May Tower 1

中半山梅苑一座

7 May Road, Midlevels Central
Harbour view duplex unit at prime location
維港景複式單位，黃金地段

2,850 s.f.
\$48,000,000

www.landscape.com/15356.htm | David Chan 陳先生 9238 2012



Clovelly Court

中半山嘉富麗苑

12 May Road, Midlevels Central
Large 4-bedroom apartment in lower peak
四房大單位，位處下山頂段

2,722 s.f.
\$50,000,000 also for lease \$118,000

www.landscape.com/15514.htm | Teresa Lau 劉小姐 9080 6686



Broadview Villa

跑馬地樂景園

20 Broadwood Road, Happy Valley
Large and practical flat with splendid views
實用寬敞單位，享壯觀景色

3,134 s.f.
\$52,000,000

www.landscape.com/15158.htm | Rowena Siu 蕭小姐 9348 4118



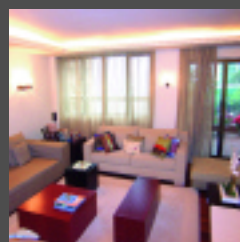
Trafalgar Court

東半山大寶閣

70 Tai Hang Road, Midlevels East
Huge practical 5-bedroom apartment close to Causeway Bay
巨型實用五房，鄰近銅鑼灣

3,008 s.f.
\$54,000,000

www.landscape.com/15093.htm | Sami Woo 胡小姐 9493 8275



Grenville House 中半山嘉慧園

1, 3 & 3A Magazine Gap Road, Midlevels Central

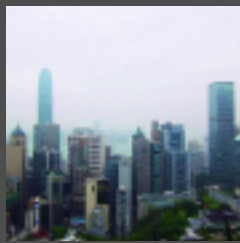
Nicely decorated colonial apartment with large balcony
雅裝英式住宅連大露台

3,400 s.f.
\$63,000,000

www.landscape.com/12030.htm | David Leung 梁先生 9199 0672

MID-LEVELS SALES

半山
出售



The Albany

中半山 雅賓利大廈

1 Albany Road, Midlevels Central
Luxury residence on Old Peak Road with open city view
尊貴府邸，位於舊山頂道，享開揚城市景

2,549 s.f.
\$63,000,000

www.landscape.com/15001.htm | David Chan 陳先生 9238 2012



Borrett Mansion

中半山寶德臺

8A-9B Borrett Road, Midlevels Central
Spacious 4-bedroom apartment with huge balcony
寬敞四房單位連巨型露台

2,800 s.f.
\$70,000,000

www.landscape.com/12153.htm | Carman Szeto 司徒小姐 8100 3893



Century Tower II

中半山 世紀大廈2座

1A Tregunter Path, Midlevels Central
Huge apartment with city harbour and green view
巨型單位享都會維港景及綠景

3,638 s.f.
\$72,000,000 also for lease \$170,000 incl.

www.landscape.com/11556.htm | Simon Yung 翁先生 9418 5743



Bowen Place

中半山寶雲閣

11A Bowen Road, Midlevels Central
Rare harbour view duplex with five bedrooms in quiet location
罕有五房海景複式，位置寧靜

3,621 s.f. (plus 184 s.f. terrace)
\$80,000,000

www.landscape.com/15241.htm | Christine Chong 莊小姐 9648 6082



The Albany

中半山 雅賓利大廈

1 Albany Road, Midlevels Central
Prestigious 4-ensuite duplex with splendid views
豪華四套房複式享醉人景致

3,563 s.f.
\$90,000,000

www.landscape.com/12493.htm | Eric Wong 黃先生 9740 3396



Garden Terrace 2 & 3

中半山花園臺2 & 3座

8A Old Peak Road, Midlevels Central
Huge combined unit with eight ensuites
巨型相連單位，設有八套房

6,018 s.f.
\$100,000,000

www.landscape.com/14414.htm | Eric Wong 黃先生 9740 3396



Tregunter Tower 1

中半山 地利根德閣 1座

14 Tregunter Path, Midlevels Central
Huge penthouse duplex with roof in prime location
巨型頂層複式連天台，黃金地段

6,143 s.f. (plus 1,100 s.f. roof)
\$100,000,000

www.landscape.com/13868.htm | Johnny Cheung 張先生 9278 9939



Branksome Crest

中半山地利根德里3A號

3A Tregunter Path, Midlevels Central
Prestigious apartment with walk-out garden and private swimming pool
尊貴府邸，享私家平台花園及私人泳池

4,620 s.f. (plus 860 s.f. terrace)
\$220,000,000

www.landscape.com/13652.htm | Stephen Chan 陳先生 9093 3381

MID-LEVELS LEASE

半山
出租



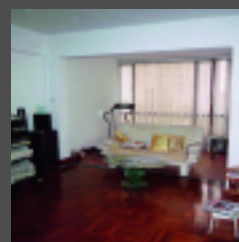
Fujiya Mansion

中半山 富士屋

21-23A Kennedy Road, Midlevels Central
Conveniently located vintage mid-rise with easy access to causeway bay
典雅中密度住宅，位置方便，銅鑼灣近在咫尺

1,200 s.f.
\$34,000 incl. also for sale \$11,500,000

www.landscape.com/14627.htm | Sissy Li 李小姐 9642 6969



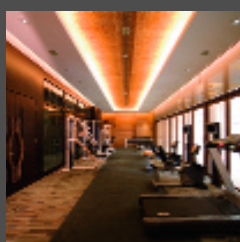
Kam Yuen Mansion

中半山錦園大廈

3 Old Peak Road, Midlevels Central
Colonial apartment on Old Peak Road with bargain rental
舊山頂道英式住宅，租金化算

2,384 s.f.
\$65,000 incl.

www.landscape.com/15463.htm | Teresa Lau 劉小姐 9080 6686



31 Robinson Road, Midlevels West

西半山 羅便臣道31號

Spacious 3 bedroom apartment with balcony at convenient location
寬敞三房連露台，位置方便

1,172 s.f.
\$65,000 incl.

| Sissy Li 李小姐 9642 6969



Wah Fung Mansion

東半山華峰閣

27 Tai Hang Road, Midlevels East
Tai Hang apartment in high privacy
大坑高私隱度住宅

2,087 s.f.
\$65,000

www.landscape.com/15461.htm | Carman Szeto 司徒小姐 8100 3893

MID-LEVELS LEASE



Hatton Place

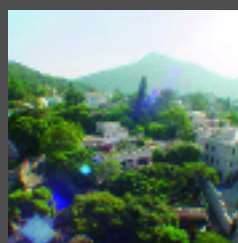
西半山杏彤苑

1A Po Shan Road, Midlevels West
High privacy mid-rise apartment
高私隱度中密度住宅

1,579 s.f.
\$68,000

www.landscape.com/14905.htm

Mira To 杜小姐 9486 1566



Monterey Court

渣甸山白建時道47-49號

47-49 Perkins Road, Jardine's Lookout
Open view 3-bedroom apartment in
Jardine's Lookout
渣甸山三房單位，開揚景觀

1,788 s.f.
\$70,000

www.landscape.com/14848.htm

Teresa Lau 劉小姐 9080 6686



The Leighton Hill

跑馬地禮頓山

2B Broadwood Road, Happy Valley
Luxurious 3-bedroom apartment
overlooking the racecourse
豪華三房單位眺望馬場

1,438 s.f.
\$70,000 incl.

www.landscape.com/14232.htm

Carman Szeto 司徒小姐 8100 3893



Hillview

中半山半山樓

21-23 MacDonnell Road, Midlevels Central
Spacious mid-rise with new decorations in
convenient location
寬敞中密度單位，全新裝修，位置方便

1,600 s.f.
\$72,000 incl.

www.landscape.com/14974.htm

Philip Lai 黎先生 9430 3330

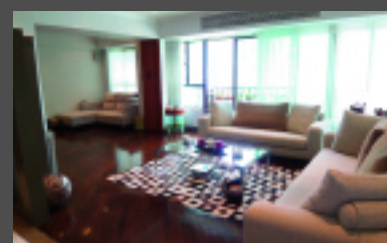


Carnation Court

東半山康馨園

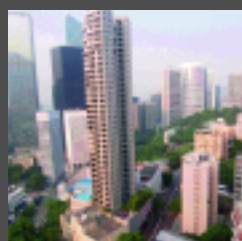
41-47 Tai Hang Road, Midlevels East
Practical 4-bedroom flat with open city
view on fringe of causeway bay
實用四房單位享開揚城市景，鄰近銅鑼灣

2,126 s.f.
\$82,000 incl.



www.landscape.com/15207.htm

Sami Woo 胡小姐 9493 8275



Park Mansions

中半山百年順大廈

27-29 MacDonnell Road, Midlevels Central
Conveniently located 4-bedroom flat in
excellent condition
四房單位，狀況極佳，位置方便

2,013 s.f.
\$85,000 incl.

www.landscape.com/15353.htm

Teresa Lau 劉小姐 9080 6686



Pearl Gardens

西半山明珠臺

7 Conduit Road, Midlevels West
Practical apartment with balcony
實用住宅連露台

2,200 s.f.
\$85,000 incl. also for sale \$30,000,000

www.landscape.com/14124.htm

Rowena Siu 蕭小姐 9348 4118



Cliffview Mansions

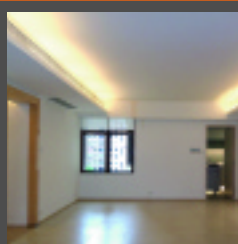
西半山康苑

17-25 Conduit Road, Midlevels West
Large colonial style apartment with huge
balcony
寬敞英式住宅連大露台

3,000 s.f.
\$92,000 incl. also for sale Open Offer

www.landscape.com/15038.htm

Sylvia Tsang 曾小姐 9801 1742



Elm Tree Towers

渣甸山愉富大廈

8-10 Chun Fai Road, Jardine's Lookout
Tastefully renovated apartment in quiet area
品味裝修單位，位置清靜

2,329 s.f.
\$95,000 incl.

www.landscape.com/15203.htm

Rowena Siu 蕭小姐 9348 4118



Piccadilly Mansions

西半山碧苑

4-6 Po Shan Road, Midlevels West
Large practical apartment with harbour
view in tree-lined surroundings
實用大單位享維港景，環境翠綠

2,790 s.f.
\$100,000 incl.

www.landscape.com/15337.htm

Mira To 杜小姐 9486 1566



Pine Court

中半山翠峰園

5 Old Peak Road, Midlevels Central
Newly decorated colonial mid-rise with
private backyard and large balcony
新裝英式中密度住宅連私家後園及大露台

2,650 s.f. (plus 250 s.f. terrace)
\$120,000 incl.

www.landscape.com/14452.htm

Teresa Lau 劉小姐 9080 6686

MID-LEVELS LEASE

半山
出租



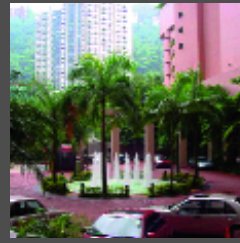
Garden Terrace 2 & 3

中半山 花園臺2 & 3座

8A Old Peak Road, Midlevels Central
Large apartment in exclusive development
on fringe of Central
寬敞單位，著名屋苑，鄰近中環

3,009 s.f.
\$128,000 incl.

www.landscape.com/3309.htm | David Chan 陳先生 9238 2012



Queen's Garden

中半山裕景花園

9 Old Peak Road, Midlevels Central
3-bedroom apartment with city view
三房單位享城市景

2,830 s.f.
\$129,000

www.landscape.com/3309.htm | Rita Lee 李小姐 9437 0087



Fairlane Tower

中半山 寶雲山莊

2B Bowen Road, Midlevels Central
Prestigious home in prime location
overlooking city skyline
尊貴府邸，黃金地段，眺望大都會景致

2,830 s.f.
\$140,000

www.landscape.com/13308.htm | Rita Lee 李小姐 9437 0087



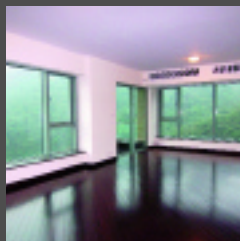
Clovelly Court

中半山嘉富麗苑

12 May Road, Midlevels Central
Spacious 4-bedroom apartment with
clubhouse facilities
寬敞四房享會所設施

2,809 s.f.
\$150,000 incl.

www.landscape.com/15096.htm | Carman Szeto 司徒小姐 8100 3893



Bowen's Lookout

中半山 寶雲道13號

13 Bowen Road, Midlevels Central
Luxurious apartment on Bowen Road
寶雲道豪華住宅

2,388 s.f.
\$155,000

www.landscape.com/15076.htm | Rita Lee 李小姐 9437 0087



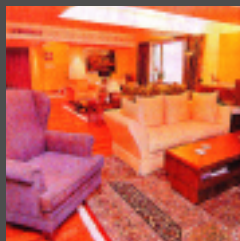
Century Tower II

中半山世紀大廈 2座

1A Tregunter Path, Midlevels Central
Nicely decorated 4-bedroom property with
high privacy
雅裝四房物業享高私隱度

3,638 s.f.
\$175,000 incl.

www.landscape.com/15252.htm | Mary Li 李小姐 9011 6595



Tregunter Tower 3

中半山 地利根德閣3座

14 Tregunter Path, Midlevels Central
Tastefully decorated duplex with sky terrace
品味裝修複式，設有空中平台

4,146 s.f. (plus 1,073 s.f. roof)
\$180,000 also for sale \$90,000,000

www.landscape.com/14710.htm | Louis Wong 黃先生 9871 6828



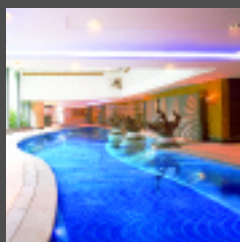
Borrett Mansion

中半山寶德臺

8A-9B Borrett Road, Midlevels Central
Huge penthouse apartment with Victoria
Harbour view
巨型頂層單位享維港景致

6,000 s.f.
\$300,000 incl.

www.landscape.com/14274.htm | Christine Chong 莊小姐 9648 6082



Regence Royale

中半山 富匯豪庭

2 Bowen Road, Midlevels Central
Prestigious modern harbour view flat in
tree-lined neighbourhood
尊貴時尚維港景住宅，綠樹圍蔭

5,219 s.f.
\$400,000 incl. also for sale \$150,000,000

www.landscape.com/12813.htm | Yvonne Chang 鄭小姐 9088 4666



The Summit

東半山御峰

41C Stubbs Road, Midlevels East
Jumbo penthouse duplex with sweeping
harbour view
巨型頂層複式，享超闊海景

6,496 s.f.
\$430,000 incl.

www.landscape.com/15148.htm | Yvonne Chang 鄭小姐 9088 4666

THE PEAK SALES

山頂
出售



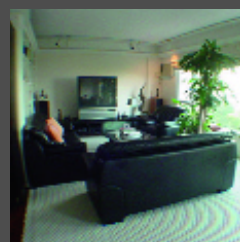
Villa Verde

山頂 環翠園

4-18 Guildford Road, The Peak
Spacious practical apartment at lower Peak
寬敞實用住宅，位於下山頂段

1,505 s.f.
\$29,000,000

www.landscape.com/14164.htm | Johnny Cheung 張先生 9278 9939



Barker Villa

山頂 柏架別墅

41 Barker Road, The Peak
Cosy apartment with panoramic views
舒適單位享環迴景觀

1,650 s.f.
\$45,000,000

www.landscape.com/540.htm | David Leung 梁先生 9199 0672

THE PEAK SALES



Carolina Garden

山頂 嘉樂園

20-34 Coombe Road, The Peak
Rare colonial apartment in prestigious location

罕有英式單位，優越地段

2,350 s.f.
\$48,000,000

www.landscape.com/12308.htm | David Leung 梁先生 9199 0672



Villa Verde

山頂環翠園

4-18 Guildford Road, The Peak
Spacious colonial apartment
寬敞英式住宅

2,540 s.f.
\$51,800,000

www.landscape.com/2319.htm | David Leung 梁先生 9199 0672



26 Magazine Gap Road, The Peak

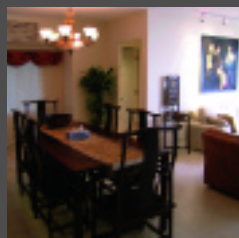
山頂 馬己仙峽道26號

Colonial apartment on lower Peak with harbour view

英式住宅位處下山頂段，享維港景

2,400 s.f.
\$58,000,000 also for lease \$108,000 incl.

www.landscape.com/13997.htm | Sissy Li 李小姐 9642 6969



Montebello

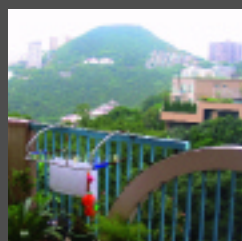
山頂濠景閣

15-17 Plantation Road, The Peak

Duplex apartment with fantastic sea view
複式單位享一流海景

3,050 s.f.
\$58,800,000

www.landscape.com/5854.htm | David Leung 梁先生 9199 0672



Stewart Terrace

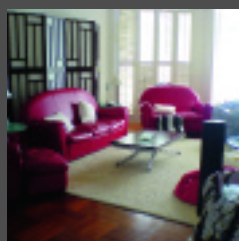
山頂 史釗域臺

81-95 Peak Road, The Peak
Colonial large flat in serene and lush green environm

英式大單位，環境寧靜翠綠

3,103 s.f.
\$65,000,000

www.landscape.com/13029.htm | Sissy Li 李小姐 9642 6969



La Hacienda - Apartment

山頂加列山道29-33號

29-33 Mount Kellett Road, The Peak

Rare colonial apartment at the peak
山頂罕有英式單位

3,100 s.f.
\$70,000,000

www.landscape.com/12453.htm | David Leung 梁先生 9199 0672



Peak Garden

山頂 山頂花園

16-20 Mount Austin Road, The Peak
Exclusive Peak apartment with a bird's eye view of Victoria Harbour

獨特山頂住宅，鳥瞰維港

2,655 s.f.
\$78,000,000

www.landscape.com/13923.htm | Mark Mak 麥先生 6838 2929

La Hacienda - Lower Townhouse



山頂 加列山道29-33號

29-33 Mount Kellett Road, The Peak

Highly sought after townhouse with bird's eye view of Southside
極受歡迎排屋，鳥瞰港島南區

3,200 s.f.
\$99,000,000

www.landscape.com/14844.htm | Johnny Cheung 張先生 9278 9939



Overthorpe

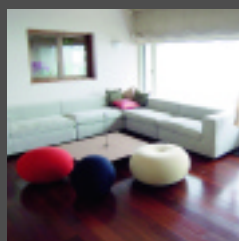
山頂 豐林閣

24-28 Mount Austin Road, The Peak
Harbour view townhouse with large private garden

維港景排屋連特大私家花園

2,502 s.f. (plus 1,624 s.f. garden)
\$110,000,000

www.landscape.com/13233.htm | Mark Mak 麥先生 6838 2929



Mountain Lodge

山頂崑廬

44 Mount Kellett Road, The Peak

Rare duplex apartment with Southside sea view
罕有複式享南區海景

5,200 s.f.
\$120,000,000

www.landscape.com/14003.htm | David Leung 梁先生 9199 0672



Strawberry Hill

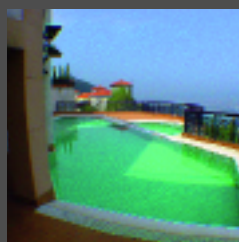
山頂 紅莓閣

8 Plunkett's Road, The Peak
Rare colonial sea view house with private garden

罕有英式海景洋房連私家花園

3,200 s.f. (plus 388 s.f. garden)
\$125,000,000

www.landscape.com/14357.htm | Louis Wong 黃先生 9871 6828



Abergeldie

山頂種植道52號

52 Plantation Road, The Peak

Exclusive Peak townhouse with a bird's eye view of Victoria Harbour
獨特山頂排屋，鳥瞰維港景

3,583 s.f.
\$180,000,000

www.landscape.com/13805.htm | David Leung 梁先生 9199 0672

THE PEAK SALES

山頂
出售



12-22 Black's Link, The Peak 山頂 布力徑12-22號
Townhouse in quiet location with four bedrooms and huge private garden
四房排屋位處寧靜地段，設有特大私家花園

5,000 s.f.
\$250,000,000 also for lease \$300,000

www.landscape.com/10425.htm | David Chan 陳先生 9238 2012



1-9 Rosmead Road, The Peak 山頂 樂善美道1-9號
Rare single number garden house on the Peak
罕有獨立號碼花園洋房，位處山頂

5,136 s.f.
(plus 2,228 s.f. terrace & 1,955 s.f. garden)
\$250,000,000

www.landscape.com/14409.htm | Eric Wong 黃先生 9740 3396



Gough Hill Residences
山頂 歌賦山3至5號
3-5 Gough Hill Path, The Peak
Exclusive Peak house with huge garden
特色山頂洋房連大花園

5,657 s.f.
(plus 5,320 s.f. garden & 1,717 s.f. roof)
\$330,000,000 also for lease \$580,000 incl.

www.landscape.com/15140.htm | Teresa Fung 馮小姐 9138 1621



16 Pollock's Path, The Peak 山頂 普樂道16號
Fully decorated garden house overlooking Victoria Harbour with private pool
靚裝花園屋眺望維港設有私家泳池

7,229 s.f.
(plus 1,999 s.f. garden & 1,756 s.f. terrace)
\$433,740,000

Louis Wong 黃先生 9871 6828



15 Gough Hill Road, The Peak
山頂 歌賦山道15號
Rare single detached house on the Peak
罕有山頂獨立屋

4,607 s.f.
\$480,000,000 also for lease \$500,000

www.landscape.com/12223.htm | Mark Mak 麥先生 6838 2929



Severn 8
山頂 倚巒
8 Severn Road, The Peak
Brand new garden house overlooking Victoria Harbour
全新花園屋，眺望維港

5,069 s.f.
Open Offer

www.landscape.com/9722.htm | Mark Mak 麥先生 6838 2929

THE PEAK LEASE

山頂
出租



Chelsea Court
山頂 賽詩閣
63 Mount Kellett Road, The Peak
Luxurious boutique apartment on the Peak
豪華品味物業，位處山頂

1,522 s.f.
\$82,000

www.landscape.com/3349.htm | Rita Lee 李小姐 9437 0087



The Mount Austin
山頂 柯士甸山道8號
8 Mount Austin Road, The Peak
Luxury boutique apartment on the Peak
豪華品味物業，位處山頂

2,035 s.f.
\$88,000

www.landscape.com/880.htm | Rita Lee 李小姐 9437 0087



1 Plantation Road
山頂 種植道1號
Luxurious Peak apartment with peaceful Southside sea view
豪華山頂住宅享平靜南區海景

1,768 s.f.
\$94,800

www.landscape.com/15300.htm | Sylvia Tsang 曾小姐 9801 1742



Chateau Vivienne
山頂 顯峰居
72 Mount Kellett Road, The Peak
Sea view duplex with private pool on the Peak
山頂海景複式，享私家泳池

1,586 s.f.
\$98,000

www.landscape.com/14910.htm | Sami Woo 胡小姐 9493 8275



43 Barker Road, The Peak
山頂 白加道43號
Modern harbour view apartment on Barker Road
時尚維港景單位，位處山頂白加道

3,820 s.f.
\$200,000

www.landscape.com/12689.htm | Sissy Li 李小姐 9642 6969



Sherwood's Bluff
山頂 百祿徑10號
10 Bluff Path, The Peak
House on the Peak with Southside sea view
山頂洋房享南區海景

4,055 s.f. (plus 400 s.f. garden)
\$200,000 also for sale Open Offer

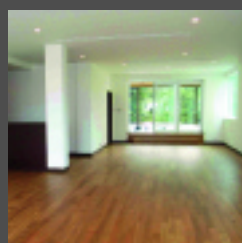
www.landscape.com/3719.htm | Maria Cheung 張小姐 6256 1848

For more listings, please go to www.landscape.com/sale

For more listings, please go to www.landscape.com/lease

The Key **volume 45** 18

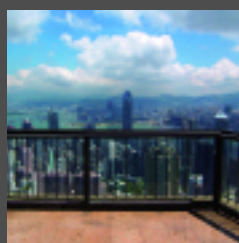
THE PEAK LEASE



**11 Coombe Road,
The Peak 山頂 甘道11號**
4-bedroom unit with double ensembles
四房單位，設有雙套房

3,830 s.f.
\$200,000

Maria Cheung 張小姐 6256 1848



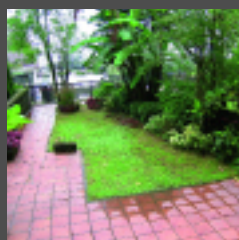
Altadena
山頂白加道27號
27 Barker Road, The Peak
Rare duplex penthouse with
unobstructed harbour view
罕有頂層複式享無遮擋維港景
4,500 s.f. (plus 1,435 s.f. roof)
\$230,000

www.landscape.com/11910.htm Yvonne Chang 鄭小姐 9088 4666



Interocean Court
山頂 山頂道26 號
26 Peak Road, The Peak
Prestigious 5-bedroom apartment with
panoramic of Victoria Harbour
尊貴五房單位享環迴維港景
3,844 s.f.
\$240,000

www.landscape.com/15180.htm Carman Szeto 司徒小姐 8100 3893



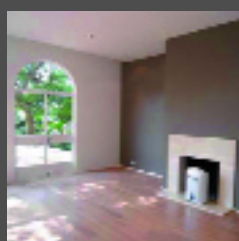
Mount Austin Estate
山頂山景花園別墅
5 Mount Austin Road, The Peak
Exclusive garden house with Southside
sea view
獨特花園洋房，南區海景
3,757 s.f.
\$235,000

www.landscape.com/15181.htm Maria Cheung 張小姐 6256 1848



74 Mount Kellett Road
山頂 加列山道 74 號
74 Mount Kellett Road, The Peak
Newly renovated sea view garden house
新裝海景花園洋房
4,200 s.f. (plus 300 s.f. garden)
\$250,000 incl.

www.landscape.com/15495.htm Yvonne Chang 鄭小姐 9088 4666



Strawberry Hill
山頂紅莓閣
8 Plunkett's Road, The Peak
Colonial garden townhouse with facilities
decorated in modern style
英式花園排屋，裝修風格時尚，享有消閒設施
2,880 s.f. (plus 200 s.f. garden)
\$250,000 incl.

www.landscape.com/14334.htm Sami Woo 胡小姐 9493 8275



Severn 8
山頂 倚巒
8 Severn Road, The Peak
Brand new harbour view garden townhouse
全新維港景花園排屋
3,330 s.f.
\$290,000

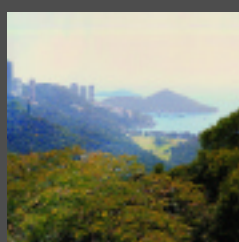
www.landscape.com/14171.htm

Teresa Lau 劉小姐 9080 6686



Peak Garden
山頂 山頂花園
16-20 Mount Austin Road, The Peak
Newly renovated rare duplex penthouse
with panoramic harbour view
新裝罕有複式頂層單位，環迴維港景
4,000 s.f. (plus 1,377 s.f. roof)
\$350,000

www.landscape.com/14538.htm Stephen Chan 陳先生 9093 3381



**62-70 Black's Link,
The Peak 山頂 布力徑62至70號**
Rare detached house with huge garden
overlooking Deep Water Bay
罕有獨立屋設有巨型花園，眺望深水灣
3,681 s.f.
(plus 5,844 s.f. garden & 1,044 s.f. roof)
\$500,000

www.landscape.com/15516.htm Louis Wong 黃先生 9871 6828



Landscape Realty Limited C-018733
a member of Landscape Surveyors Ltd

Tel: 852-2866 0022 Fax: 852-2866 0015
Email: info@landscape.com Website: www.landscape.com
Unit 3106, 31/F, Hopewell Centre,
183 Queen's Road East, Wanchai, Hong Kong

The information, text, photos, analyses and projections contained herein are provided solely for the convenience of prospective clients and no warranty or representation as to their accuracy, correctness or completeness is made by Landscape Surveyors Limited, Landscape Realty Limited or the owners, none of whom shall have any liability or obligation with respect thereto. Interested parties should rely on their own investigations, interpretations and analyses in connection with the purchase or letting thereof.

Information has been provided to us by sources deemed reliable, but no warranty or representation is made as to its accuracy, correctness or completeness. These offerings are made subject to contract, correction of errors, omissions, prior sale or lease, change of price or terms or withdrawal from the market without notice. The contents of The Key are for reference only and do not constitute all or any part of a contract.
Copyright 2008